

ශ්‍රී ලංකා භාරවදු දෙපාර්තමේන්තුව இலங்கை மதுவரித் திணைக்களம் Excise Department of Sri Lanka



කාර්ය සාධන වාර්තාව
செயலாற்றுகை அறிக்கை
Performance Report

2017



කාර්ය සාධන වාර්තාව
செயலாற்றுகை அறிக்கை
Performance Report

2017

Excise Department of Sri Lanka

(Year 2017)

Hon. Ravi Karunanayake (M.P.)
Minister of Finance
(Up to 22nd May 2017)

Hon. Mangala Samaraweera (M.P.)
Minister of Finance and Mass Media
(From 22nd May 2017)

Hon. Laxman Yapa Abeywardene
State Minister of Finance
(Up to 31st May 2017)

Hon. Eran Wickramaratne (M.P.)
State Minister of Finance
(From 31st May 2017)

Hon. Lasantha Alagiyawanna (M.P.)
Deputy Minister of Finance and Mass Media
(From 31st May 2017)

Heads

Dr. R.H.S. Samarathunga
Secretary, Ministry of Finance,
Secretary to the Treasury

Mr.L.K.G. Gunawardhane
Commissioner General of Excise
(Up to 24th May 2017)

Mr.A. Bodaragama
Commissioner General of Excise (c.u.)
(From 25th May 2017 Up to 18th September 2017)

Mrs.K.H.A.Meegasmulla
Commissioner General of Excise
(From 18th September 2017)

Heads of Divisions of the Excise Department of Sri Lanka

Mr.A. Bodaragama
Additional Commissioner General (Revenue Operations and Law Enforcement) c/u.
(Up to 25th May 2017)
Commissioner of Excise (Revenue Operations)
Advisor on Excise Policies, Ministry of Finance and Mass Media
(From 18th September 2017)

Mrs.Thamara D.Perera
Additional Commissioner General (Revenue Policies and Administration)
(Up to 30th September 2017)

Mrs.B.M.S.Bandara
Additional Commissioner General (Revenue Policies and Administration)
(From 01st October 2017)

Mr.Gamini Mahagamage
Commissioner of Excise (Administration & Human Resources)

Mr.S.D.L. de Mellawa
Commissioner of Excise (Law Enforcement)

Mr.S.A.S. Wickramarathne
Chief Accountant

Mr.A.Kumarasiri Perera
Chief Internal Auditor

Mr.M.D.M.W.K. Dissanayake
Deputy Commissioner of Excise (Revenue License)

Mr.W.M.M.B. Wansooriya
Deputy Commissioner of Excise (Law Enforcement)

Mr.J. Pushpakumara Silva
Deputy Commissioner of Excise (Logistics)
(Up to 25th May 2017)
Deputy Commissioner of Excise (Research & Studies)
(From 25th May 2017)

Mr.K. Kumarasinghe
Deputy Commissioner of Excise (Human Resources)
Deputy Commissioner of Excise (Supply Chain Regulation &IT) c.u.

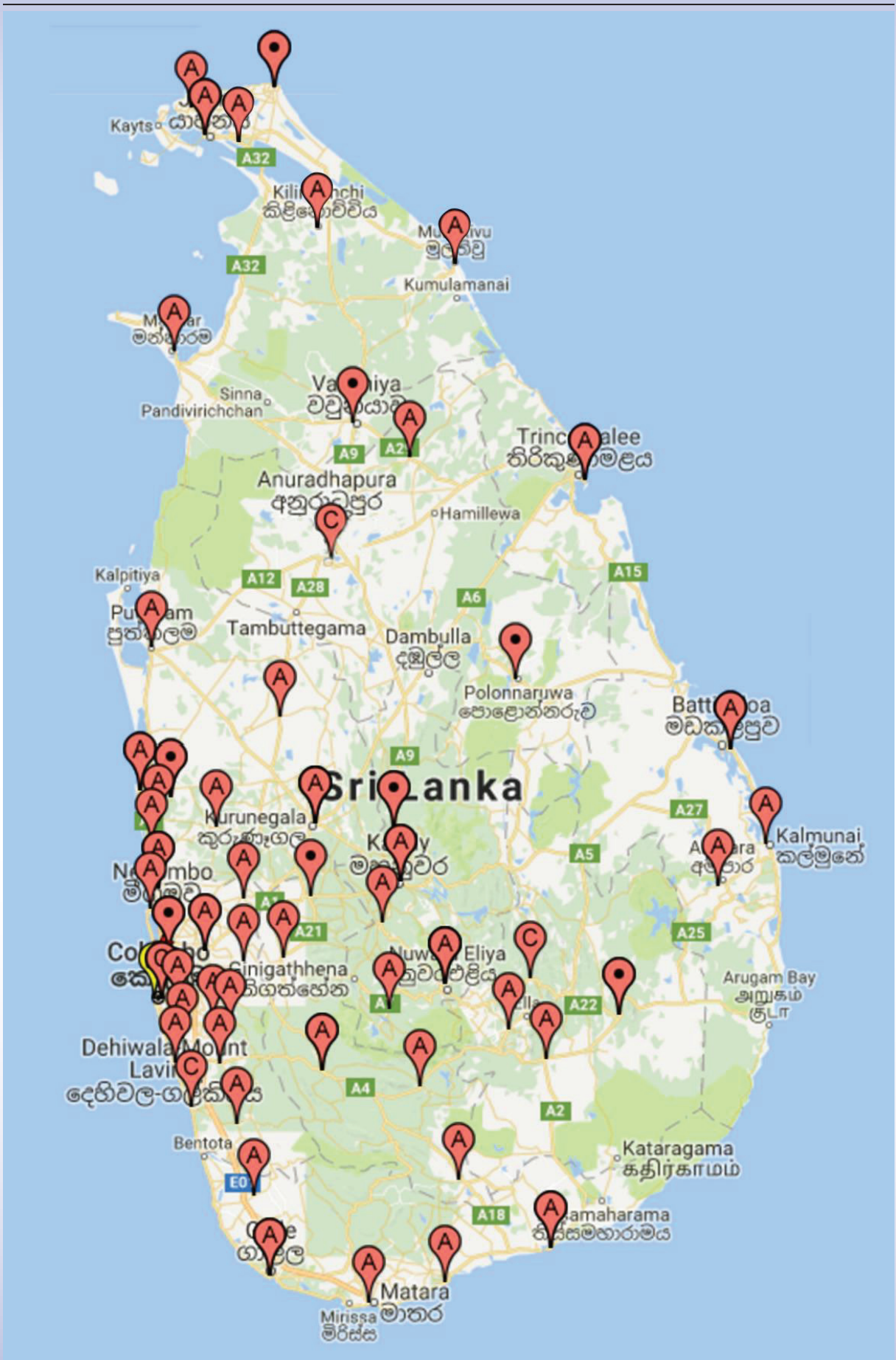
Mr.Sameera Jayawardena
Deputy Commissioner of Excise (Administration)
(From 25th May 2017)

Mr.B.A.P.P.C. Bamunuarachchi
Accountant

Divisional Supervisory Officers of the Excise Department of Sri Lanka

Assistant Commissioner of Excise (Western Province I - Colombo District)
Assistant Commissioner of Excise (Western Province II - Kalutara District)
Assistant Commissioner of Excise (Western Province III - Gampaha District)
Assistant Commissioner of Excise (Central Province)
Assistant Commissioner of Excise (Southern Province)
Assistant Commissioner of Excise (Northern Province I - Jaffna District)
Assistant Commissioner of Excise (Northern Province II, Mullaitivu, Kilinochchi & Mannar Districts)
Assistant Commissioner of Excise (Eastern Province)
Assistant Commissioner of Excise (North Western Province I - Kurunegala District)
Assistant Commissioner of Excise (North Western Province II - Puttalam District)
Assistant Commissioner of Excise (North Central Province)
Assistant Commissioner of Excise (Uva Province)
Assistant Commissioner of Excise (Sabaragamuwa Province)
Assistant Commissioner of Excise (Southern Province)
Assistant Commissioner of Excise (Sabaragamuwa Province)
Superintendent of Excise (Excise Head Office)
Superintendent of Excise (Colombo City 1)
Superintendent of Excise (Colombo City 11)
Superintendent of Excise (Kaluthara 1)
Superintendent of Excise (Distilleries Circle)
Superintendent of Excise (Gampaha)
Superintendent of Excise (ja-ela)
Superintendent of Excise (Special Operations Bureau)
Superintendent of Excise (Narcotics)
Superintendent of Excise (Kandy)
Superintendent of Excise (Mathale)
Superintendent of Excise (Nuwaraeliya)
Superintendent of Excise (Galle)
Superintendent of Excise (Matara)
Superintendent of Excise (Hambantota)
Superintendent of Excise (Point Pedro)
Superintendent of Excise (Jaffna)
Superintendent of Excise (Kilinochchi)
Superintendent of Excise (Vavunia)
Superintendent of Excise (Trincomalee)
Superintendent of Excise (Batticaloa)
Superintendent of Excise (Ampara)
Superintendent of Excise (Kurunegala)
Superintendent of Excise (Naththandiya)
Superintendent of Excise (Chilaw)
Superintendent of Excise (Anuradhapura)
Superintendent of Excise (Polonnaruwa)
Superintendent of Excise (Badulla)
Superintendent of Excise (Monaragala)
Superintendent of Excise (Rathnapura)
Superintendent of Excise (Kegalle)

Regional Offices of the Excise Department of Sri Lanka



Regional Offices of the Excise Department of Sri Lanka

1. Western Province

- 1.1 Office of the Assistant Commissioner of Excise (Western Province I)
 - 1.1.1 Superintendent of Excise (Colombo City 1)
 - Colombo City Excise Station
 - Kesbewa Excise Station
 - 1.1.2 Superintendent of Excise (Colombo City II)
 - Padukka Excise Station
 - Sri Jayawardenapura Excise Station
 - 1.1.3 Office of the Superintendent of Excise (Excise Special Operations Bureau)
 - Excise Special Operations Bureau
 - 1.1.4 Office of the Superintendent of Excise(Narcotic Unit)
 - Excise Narcotic Law Enforcement Unit
- 1.2 Office of the Assistant Commissioner of Excise (Western Province II)
 - 1.2.1 Superintendent of Excise (Kalutara)
 - Kalutara Excise Station
 - Aluthgama Excise Station
 - Horana Excise Station
 - Mathugama Excise Station
 - Panadura Excise Station
 - 1.2.2 Office of the Superintendent of Excise (Distilleries Circle)
- 1.3 Office of the Assistant Commissioner of Excise (Western Province III)
 - 1.3.1 Superintendent of Excise (Gampaha)
 - Gampaha Excise Station
 - Pugoda (Kirindiwela) Excise Station
 - Meerigama Excise Station
 - 1.3.2 Office of the Superintendent of Excise (Ja-ela)
 - Ja-ela Excise Station
 - Negombo Excise Station

2. Southern Province

- 2.1 Office of the Assisnat Commissioner of Excise (Southern Province)
 - 2.1.1. Supirintendent of Excise (Galle)
 - Galle Excise Station
 - Elpitiya Excise Station
 - Excise Special Operations Bureau (Southern Province)
 - 2.1.2. Office of the Supirintendent of Excise (Matara)
 - Matara Excise Station
 - 2.1.3. Office of the Supirintendent of Excise (Hambantota)
 - Hambantota Excise Station
 - Tangalle Excise Station

3. **Sabaragamuwa Province**
 - 3.1 Office of the Assistant Commissioner of Excise (Sabaragamuwa Province)
 - 3.1.1. Superintendent of Excise (Ratnapura)
 - Ratnapura Excise Station
 - Balangoda Excise Station
 - Embilipitiya Excise Station
 - 3.1.2. Office of the Superintendent of Excise (Kegalle)
 - Kegalle Excise Station
 - Ruwanwella Excise Station
4. **Uva Province**
 - 4.1 Office of the Assistant Commissioner of Excise (Uva Province)
 - 4.1.1. Superintendent of Excise (Badulla)
 - Badulla Excise Station
 - Bandarawela Excise Station
 - 4.1.2. Office of the Superintendent of Excise (Monaragala)
 - Monaragala Excise Station
5. **North Central Province**
 - 5.1 Office of the Assistant Commissioner of Excise (North Central Province)
 - 5.1.1. Superintendent of Excise (Anuradhapura)
 - Anuradhapura Excise Station
 - Kebathigollawa Excise Station
 - Excise Special Operations Bureau (North Central Province)
 - 5.1.2. Office of the Superintendent of Excise (Polonnaruwa)
 - Polonnaruwa Excise Station
6. **Central Province**
 - 6.1 Office of the Assistant Commissioner of Excise (Central Province)
 - 6.1.1. Superintendent of Excise (Kandy)
 - Kandy Excise Station
 - Gampola Excise Station
 - Excise Special Operations Bureau (Central Province)
 - 6.1.2. Office of the Superintendent of Excise (Matale)
 - Matale Excise Station
 - 6.2.3. Office of the Superintendent of Excise (Nuwareliya)
 - Nuwareliya Excise Station
 - Hatton Excise Station

7. North Western Province

- 7.1. Office of the Assistant Commissioner of Excise (North Western Province I)
- 7.1.1. Superintendent of Excise (Kurunegala)
- Kurunegala Excise Station
 - Maho Excise Station
 - Kuliyaipitiya Excise Station
 - Excise Special Operations Bureau (North Western Province)
- 7.2. Office of the Assistant Commissioner of Excise (North Western Province II)
- 7.2.1. Superintendent of Excise (Wennappuwa)
- Wennapuwa (Waikkala) Excise Station
 - Marawila Excise Station
- 7.2.2. Office of the Superintendent of Excise (Chilaw)
- Chilaw Excise Station
 - Madampe Excise Station
 - Puttalam Excise Station

8. Northern Province

- 8.1. Office of the Assistant Commissioner of Excise (Northern Province I)
- 8.1.1. Superintendent of Excise (Jaffna)
- Jaffna Excise Station
 - Chankanai Excise Station
 - Chawakachcheri Excise Station
- 8.1.2. Office of the Superintendent of Excise (Point Pedro)
- Mallakam Excise Station
 - Point Pedro Excise Station
- 8.2. Office of the Assistant Commissioner of Excise (Northern Province II)
- 8.2.1. Superintendent of Excise (Kilinochchi)
- Kilinochchi Excise Station
 - Mullaitivu Excise Station
- 8.2.1. Office of the Superintendent of Excise (Vauvniya)
- Mannar Excise Station
 - Vauvniya Excise Station

9. Eastern Province

- 9.1. Office of the Assistant Commissioner of Excise (Eastern Province)
- 9.1.1. Superintendent of Excise (Trincomalee)
- Trincomalee Excise Station
- 9.1.2. Office of the Superintendent of Excise (Batticaloa)
- Batticaloa Excise Station
- 9.1.3. Office of the Superintendent of Excise (Ampara)
- Ampara Excise Station
 - Kalmune Excise Station

Content

Chapter 1 Sri Lanka Excise Department.....	1
1.1 Introduction.....	2
1.2 Vision.....	2
1.3 Mission.....	2
1.4 Objectives.....	2
1.5 Activities.....	3
Chapter 2 Organizational Structure and Changes in 2017.....	5
2.1 Introduction.....	6
2.2 Organizational Structure.....	9
2.3 Recruitments.....	10
2.4 Staff Changes.....	10
2.5 Administration Division.....	13
Chapter 3 Human Resources Development.....	15
3.1 Introduction.....	16
3.2 Excise Training College - Panadaragama.....	16
3.3 Local Training Courses.....	19
3.4 Foreign Training Courses.....	22
Chapter 4 Implementation of New Policies.....	25
4.1 Introduction.....	26
4.2 New Excise Notifications issued & implemented in 2017.....	26
Chapter 5 Accounts Division.....	27
5.1 Introduction.....	28
5.2 Revenue Account.....	30
5.3 Funds Account.....	30
5.4 Appropriation Account.....	31
5.5 Analysis of Income and Expenditure.....	32
5.6 Advance Account.....	33
5.7 Logistic Division.....	33
5.8 Assets Account (Infrastructure).....	34
Chapter 6 Auditing.....	43
6.1 Introduction.....	44
6.2 Internal Audit Unit.....	44
Chapter 7 Revenue Operations Division.....	45
7.1 Introduction.....	46
7.2 Types of Excise Licenses.....	46
7.3 Excise Licenses issued & operated in the year 2017.....	47
7.4 Information Technology Unit.....	52

Chapter 8 Manufacturing of Liquor	53
8.1 Introduction.....	54
8.2 List of Licensed Liquor Manufacturers	56
8.3 List of Liquor Manufactories with Suspended Licenses.....	56
8.4 List of Licensed Distilleries	57
8.5 List of Licensed Stores and Warehouses	57
8.6 List of Licensed Vinegar Manufacturers.....	58
8.7 List of Excise Licensees for Industrial Manufacturing.....	58
8.8 Liquor Production and Tax Income in 2017	59
8.9 Spirit Manufacturing /Issuing in 2017	63
8.10 Income Analysis.....	66
Chapter 10 Law Enforcement	71
9.1 Introduction.....	72
9.2 Prevention of Illicit Liquor & Drugs and Social Security	73
9.3 Tobacco Tax Division	73
9.4 Legal Division.....	74
9.5 Bureaus of Excise Special Operations	75
Chapter 10 Importation and Exportation of Liquor, Spirits, Tobacco and Cigarettes.....	79
10.1 Quantity of Imported Foreign Liquor and the Tax Income	80
10.2 List of Licensed Foreign Liquor Importers.....	80
10.3 Rectified Spirits Imported for Manufacturing Liquor	81
10.4 Tobacco Taxes	81
10.5 Tax Exemption on Liquor Exportation	81
10.6 Excise Duty levied on Raw Materials used for Manufacturing Ethanol.....	82
10.7 Excise Duty on Importation of Non-Potable Spirits	82
Chapter 11 Appendices.....	83
Chapter 12 Conclusion.....	85

Chapter 1 | Excise Department of Sri Lanka

- 1.1. Introduction
- 1.2. Vision
- 1.3. Mission
- 1.4. Objectives
- 1.5. Activities

1.1 Introduction

Excise Department of Sri Lanka was established in 1913 and operates under the purview of the Ministry of Finance and Mass Media at present. It holds the third place among the tax income generating Departments to the Government. Excise Department of Sri Lanka mainly implements the Excise Ordinance No.08 of 1912 which is the 52nd Chapter of the Legislative Enactment. Moreover, it implements the Tobacco Tax Act No.8 of 1999, Poisons, Opium and Dangerous Drugs Ordinance and the National Authority on Tobacco & Alcohol Act No.27 of 2006.

Department of Sri Lanka Police also extends a significant contribution for the task of implementing laws imposed under said ordinances and acts. Similarly, this Department serves as a member of the National Dangerous Drugs Control Board, National Authority on Tobacco & Alcohol for the purpose of implementing government policies while extending a great contribution for achieving the national goal of creating a country devoid of liquor and narcotic drugs under the theme of “A Nation Free of Alcohol” in collaboration with the Presidential Unit on Alcohol Prevention.

1.2 Vision

“Contributing to build a healthy society in Sri Lanka, which is free from illicit liquor and narcotic drugs.” is the vision of Excise Department of Sri Lanka.

1.3 Mission

“Efficient and effective administration of the liquor and the tobacco industry in Sri Lanka through the collection of revenue and prevention of illicit manufacture and sale of such products, for development and welfare of the society, and the enforcement of the Poisons, Opium and Dangerous Drugs Ordinance for the social protection of Sri Lanka” is the mission of Excise Department of Sri Lanka.

1.4 Objectives

Excise Department of Sri Lanka operates with the under mentioned objectives in order to achieve its mission.

- a. Safeguarding the revenue accumulated from liquor and tobacco.
- b. Enforcement of the Excise Ordinance and the Tobacco Tax Act.
- c. Implementation of the Poisons, Opium and Dangerous Drugs Ordinance.
- d. Implementation of National Authority Act on Tobacco and Alcohol.

1.5 Activities

Excise Department of Sri Lanka carries out the following activities so as to achieve the above objectives.

- a. Supervision and control of licensed premises, and collection of revenue therefrom.
- b. Acting as a law enforcement agency in respect of the Excise Ordinance.
- c. Enforcement of the Tobacco Tax Act including supervision and control of tobacco manufactories.
- d. Acting as a law enforcement agency in respect of the Poisons, Opium and Dangerous Drugs Ordinance.
- e. Implementation of National Authority Act on tobacco and alcohol.

Chapter 2 | Organizational Structure and Changes in 2017

- 2.1 Introduction
- 2.2 Organizational Structure
- 2.3 Recruitments
- 2.4 Staff Changes
- 2.5 Administration Division

2.1 Introduction

Excise Department of Sri Lanka operates under the direction of a Commissioner General of Excise. Commissioner General carries out his duties at the Excise Head Office and two posts of Additional Commissioner General of Excise, four posts of Commissioner of Excise and nine posts of Deputy Commissioner of Excise have been created to function under his guidance. Two posts of Additional Commissioner General of Excise, one post of Commissioner of Excise and three posts of Deputy Commissioner of Excise out of the above mentioned posts have been created anew and an officer had been appointed to cover up duties in the said post of Additional Commissioner General of Excise while three Commissioners of Excise and five Deputy Commissioners of Excise were appointed to the permanent posts during the year under review.

On the whole, one post of Additional Commissioner General of Excise, one post of Commissioner of Excise and four posts of Deputy Commissioner of Excise were vacant. An officer had been appointed to cover up duties in the said post of Additional Commissioner General of Excise only for a short term.

Moreover, a Chief Accountant, an Accountant and a Chief Internal Auditor served in the Excise Head Office and one post of Accountant was vacant during the reviewed year.

In addition to above, a number of officers from the combined and all island services have been attached to the Excise Head Office for its various duties.

With respect to the regional administration, island has been divided into 'Excise Divisions' on provincial basis for the administrative purposes of the Excise Department. Accordingly, Western Province has been divided into three Divisions while each of North Western and Northern Provinces have been divided into two Divisions on district basis as per the density of population, licenses and crimes. These Excise Divisions are supervised by the Assistant Commissioners of Excise.

'Excise Circles' comes under Excise Divisions. Excise Divisions which cover the whole province have been subdivided to Excise Circles. In this manner, an Excise Area consisting of two districts comes only under Vauvniya and Kilinochchi Excise Circles. Excise Divisions which are limited only to a district have been parted as Excise Circles with determined limits. Said Excise Circles are supervised by the Superintendent of Excise.

Excise Stations have been established under Excise Circles and Excise Areas of which the limits have been determined by the Department are controlled by them. Officers of Inspector Grade and of other ranks have been attached to these Excise Stations. The senior most Officer of the inspectorate, generally serves as the Officer In Charge.

Further, Special Operations Units and Narcotic Unit have been established and related particulars have been separately given here. Excise Units have been established in all licensed Tobacco and Alcohol manufactories located island-wide and permanent staffs have been assigned to them.

Excise Department of Sri Lanka, comprised of a Head Office, 13 Offices of Assistant Commissioners of Excise or Divisional Offices, 30 Offices of Excise Superintendents or Circle Offices, 56 Excise Stations, 05 Special Operations Bureaus, a Narcotic Unit and Excise Units which have been established in all licensed Tobacco and Alcohol manufactories located island-wide, operates to fulfill the threefold missions of Excise revenue management, law enforcement and social security.

Departmental Officers and Officers from the Combined Services and Islandwide Services have been attached to carry out duties of these offices while Departmental Officers have attached to Excise Stations and Units.

Approved cadre for Departmental Officers is 1311 while the approved cadre for Combined Services and Islandwide Services is 176. Accordingly, total approved cadre for the Department is 1487 and the actual number of staff served in the Department during the year reviewed was 1328. Hence, there were 159 vacancies which summed up to 10.7 per cent of the approved cadre.

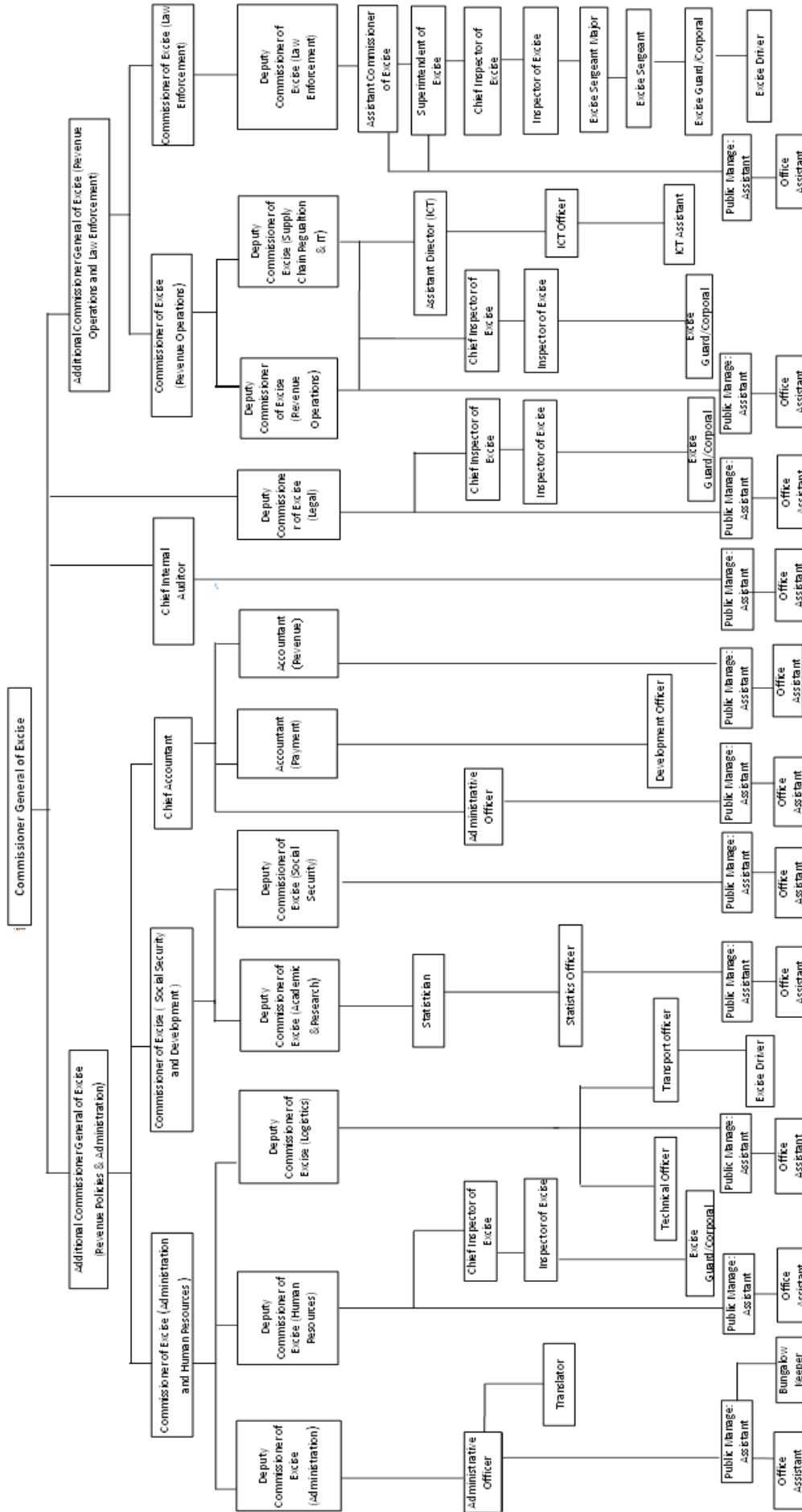
Excise Department of Sri Lanka | Performance Report - 2017

Serial No.	Designation	Approved Cadre	Actual Cadre	Vacancies
1	Commissioner General of Excise	1	1	0
2	Additional Commissioner General of Excise (Revenue Policies & Administration)	1	1	0
3	Additional Commissioner General of Excise (Revenue Operations and Law Enforcement)	1	0	1
4	Commissioner of Excise (Administration and Human Resources)	1	1	0
5	*Commissioner of Excise (Revenue Operations)	1	1	0
6	Commissioner of Excise (Law Enforcement)	1	1	0
7	Commissioner of Excise (Social Security and Development)	1	0	1
8	Chief Accountant	1	1	0
9	Chief Internal Auditor	1	1	0
10	Deputy Commissioner of Excise (Administration)	1	1	0
11	Deputy Commissioner of Excise (Revenue licenses)	1	1	0
12	Deputy Commissioner of Excise (Law Enforcement)	1	1	0
13	Deputy Commissioner of Excise (Legal)	1	0	1
14	Deputy Commissioner of Excise (Human Resources)	1	1	0
15	Deputy Commissioner of Excise (Logistics)	1	0	1
16	Deputy Commissioner of Excise (Social Security)	1	0	1
17	Deputy Commissioner of Excise (Academic & Research)	1	1	0
18	Deputy Commissioner of Excise (Supply Chain Regulation & IT)	1	0	1
19	Assistant Commissioner of Excise	13	11	2
20	Accountant	2	0	2
21	Superintendent of Excise	31	17	14
22	Statistician	1	0	1
23	Assistant Director (Information Technology)	1	0	1
24	Administrative Officer	2	2	0
25	Chief Inspector of Excise	75	64	11
26	Information and Communication Technology Officer	1	1	0
27	Translator	2	2	0
28	Inspector of Excise	300	270	30
29	Statistics Officer	1	0	1
30	Excise Sergeant Major	50	39	11
31	Development Officer	9	9	0
32	Technical Officer	1	0	1
33	Transport officer	1	0	1
34	IT Assistant	3	1	2
35	Excise Sergeant	100	15	85
36	**Excise Guard/Corporal	600	625	(25)
37	Public Management Assistant	104	97	7
38	Excise Driver	129	122	7
39	Three wheel Driver	1	1	0
40	Office Assistant	38	36	2
41	Bungalow Keeper	4	4	0
	Total	1487	1328	159(184-25)

* Officer holding the post of Excise Commissioner (Revenue Operations) has been attached to the Post of Advisor (Excise Policies) in the Ministry of Finance.

** Annulment of the promotions made to the Excise Sergeant as per the Supreme Court Verdicts 661/2012 and 663/2012 of the letter no. EB/107/E.S/Promotions (Volume III) dated 16.11.2016 was the reason for exceeding the approved cadre of Excise Guards (600).

2.2 Organizational Structure



2.3 Recruitments

- **New Recruitments**

Table 2.2 – Details of New Recruitments

Date	Post	Number of Posts
15.02.2017	Excise Guard	90

2.4 Staff Changes

Number of Officers transferred to the Department was 20 while the number of officers transferred out of the Department was 16 as at 31.12.2017.

- **Officers who retired from service**

Table 2.3 Details of Officers who retired from service

Serial No	Name of the Officer	Designation	Date of Retirement
01	Mr.A.W.W.Palihawadana	Excise Driver	01.06.2017
02	Mr.S.U.K.Basnayake	Excise Inspector	19.08.2017
03	Mr.H.M.A.Wicramasooriya	P.M.A.S	06.10.2017
04	Mr.D.P.Thilakarathne	P.M.A.S	29.10.2017
05	Mr.A.M.Jayasundara	Excise Inspector	15.11.2017
06	Mr.R.M.Sumanadasa	Excise Corporal	28.11.2017
07	Mrs.N.Manamperi	Excise Sergeant Major	31.12.2017
08	Mr.D.P.Susantha De Silva	Excise Driver	31.12.2017

- **Interdicted Officers**

Table 2.4 Details of Interdicted Officers

Serial No	Name of the Officer	Designation	Interdicted date
01	Mr.W.D.M.H.Bandara	Excise Driver	08.04.2017
02	Mr.K.H.A.K.Silva	Excise Guard	22.09.2017
03	Mr.R.R.K.De Soysa	Excise Guard	24.10.2017

- **Deceased Officers**

Table 2.5 Details of Deceased Officers

Serial No	Name of the Officer	Designation	Date of Decease
01	Mr.K.M.A.Somaweera	Excise Superintendent	23.03.2017
02	Mr.W.A.S.Wijesinghe	Excise Driver	15.05.2017
03	Mr.W.M.P.B.Welegedara	Excise Guard	28.11.2017

- **Officers who resigned from service or vacated the post**

Table 2.6 Details of Officers who resigned from service or vacated the post

Serial No	Name of the Officer	Designation	Date of Resignation/vacating the post
01	Mr.J.M.Vijitha Kumara	Excise Guard	04.03.2017
02	Mr.S.D.Pasyala	Excise Guard	14.12.2017

- **Reinstatement in service**

Table 2.7 Details of officers who were reinstated in service in the year 2017

Serial No	Name of the Officer	Designation	Date of Reinstatement
01	Mr.J.Shanthadeva De Silva	Excise Superintendent	30.08.2017

- **Promoted Officers in the year 2017**

Table 2.8 Details of Promoted Officers in the year 2017

Name of the Officer	Post Promoted to	Date of Promotion	Work Station
Mr.J.Shanthadeva De Silva	A. C.E	07.12.2017	Northern Province II

- **Officers Transferred to the Department**

Table 2.9 Details of Officers Transferred to the Department in the year 2017

Serial No	Name of the Officer	Designation	Date of Transfer
1.	Mr.M.G.P.Abeykoon	K.K.S	02.01.2017
2.	Mr.H.M.S.Dharmapriya	K.K.S	02.01.2017
3.	Mrs.R.M.A.M.Rathnayake	P.M.A	02.01.2017
4.	Mrs.H.M.K.Hemalatha	P.M.A	02.01.2017
5.	Mr.K.W.C.Luxaman	IT Assistant	02.01.2017
6.	Mrs.L.T.D.Perera	Addl.E.C.G	03.01.2017
7.	Mrs.M.A.A.Guanathilake	P.M.A	15.03.2017
8.	Mrs.W.M.S.Dilshani	K.K.S	31.03.2017
9.	Mrs.S.Sathkunarajan	Translators' Service	18.04.2017
10.	Mr.V.T.D.Perera	K.K.S	02.05.2017
11.	Mr.H.I.N.Kumara	K.K.S	08.05.2017
12.	Mr.M.A.N.Perera	K.K.S	15.05.2017
13.	Mr.Sameera Jayawardena	Deputy Commissioner of Excise	25.05.2017
14.	Mrs.A.K.Hennayake	P.M.A	13.06.2017

15.	Mr.B.M.Sarath	Development Officer	17.07.2017
16.	Mr.M.Rathnayake	P.M.A	25.07.2017
17.	Mrs.A.J.M.Athukorala	Development Officer	17.08.2017
18.	Mrs.A.M.K.Vithanage	P.M.A	21.08.2017
19.	Mrs.K.H.A Meegasmulla	E.C.G	08.09.2017
20.	Mrs.B.M.S.Bandara	Addl.E.C.G	02.10.2017

- **Officers Transferred Out of the Department**

Table 2.10 Details of Officers Transferred out of the Department in the year 2017

Serial No.	Name of the Officer	Designation	Date of Transfer
1.	Mr.R.D.W.K.Senevirathne	P.M.A	06.01.2017
2.	Mrs.W.A.V.Waranakulasooriya	P.M.A	04.01.2017
3.	Mrs.J.A.Hilda	P.M.A	06.01.2017
4.	Mr.A.R.M.Wijethunga	K.K.S	31.03.2017
5.	Mr.W.J.T.N.Thisera	K.K.S	31.03.2017
6.	Mr.R.A.S.S.Kumara	K.K.S	09.04.2017
7.	Mr.M.N.Pinto	Translators' Service	04.04.2017
8.	Mrs.D.J.Neil	P.M.A	19.04.2017
9.	Mrs.I.D.Fernado	P.M.A	21.05.2017
10.	Mrs.W.C.S.Perera	P.M.A	25.05.2017
11.	Mrs.K.K.Samararathne	P.M.A	12.06.2017
12.	Mr.R.K.A.Krishantha	Development Officer	25.06.2017
13.	Mrs.W.S.Kalutharage	IT Assistant	30.06.2017
14.	Mr.B.A.P.P.Chithrananda	S.L.Acc.S	25.07.2017
15.	Mrs.T.D.Perera	S.L.A.S(Special)	29.09.2017
16.	Mrs.V.G.Wimalawathi	P.M.A	15.11.2017

2.5 Administration Division

Administrative Division carried out duties with its staff consisting of 01 Deputy Excise Commissioner (Administration), 01 Administration Officer, 01 Chief Management Assistant, 14 Public Management Assistants and 04 Office Assistants under the supervision of Commissioner General of Excise and the Additional Commissioner General of Excise (Revenue Policies & Administration) and the Commissioner of Excise (Administration and Human Resources). Execution of general administrative tasks of the Department is the main responsibility of the Division.

This division carries out the activities related to establishment, discipline and sending on retirement of departmental officers deployed in the Head Office, and in Offices of Assistant Commissioners and Superintendents of Excise, Excise Stations, Manufactories and Distilleries located island wide as well as the officers of the Combined Service and the island wide services in addition to preparing recruitment, promotion, and transfer procedures for the department and getting them approved by the Public Services Commission as well as recruiting, promoting, transferring of officers, and conducting Efficiency Bar Examinations in accordance with the said procedures. Moreover, activities pertain to the reservation of circuit bungalows is also done by this Division.

All the officers serving in Administration Division are of the civil service which falls under the purview of Ministry of Public Administration and Management. Around 1341 personal files are maintained by this Division and frequently updated by its Public Management Assistants.

Annual transfers of the Uniformed Staff are done by this division as per the transfer procedure approved by the Public Service Commission and upon service requirement. In addition to above, internal transfers of the Combined Services and Islandwide services are also done by this Division.

Chapter 3 | Human Resource Development

- 3.1 Introduction
- 3.2 Sri Lanka Excise College - Panadaragama
- 3.3 Local Training Courses
- 3.4 Foreign Training Courses

3.1 Introduction

Human Resources Division carried out its operations with a staff consisted of 03 Excise Inspectors, 01 Excise Corporal , 02 Excise Guards, 02 Public Management Assistants and 02 Excise Drivers under the guidance of the Excise Commissioner General and the Excise Commissioner (Administration / Human Resources) and the direct supervision of the Deputy Excise Commissioner (Human Resources) in the year 2017.

2. Capacity development of Departmental Officers by means of improving knowledge, attitudes and skills via theoretical and practical training was the main task of the Human Resources Division. It was able to organize various training courses in collaboration with the local and foreign training institutes and the Excise Training College, Panadaragama during this period.

3. Further, measures were taken to provide departmental officers with educational publications with the intension of improving their knowledge. Accordingly, three publications, namely, 'Interogation and Interviewing', 'Modern Psycotropic Substances and Precursor Chemicals', 'Detecting Clandestine Drug Laboratories' were printed and published.

3.2 Sri Lanka Excise College - Panadaragama

Sri Lanka Excise College is the only training arm of the Excise Department. It was able to train and develop newly recruited officers during the year 2017 also. Two Excise Inspectors, an Excise Guard and Public Management Assistant of the HR Division were attached to the Excise College while the services of another Excise Inspector and two Excise Drivers were also obtained for the purpose of carrying out its programmes.

2. At the very outset of the year 2017, Sri Lanka Excise College was able to extend its contribution to improve the entire departmental staff by 25% by means of successfully conducting a course on law and law enforcement for newly recruited Excise Inspectors and conducting the final institutional training for the third group of new Excise Guards.
3. Being able to organize a first aid training for all ranks of the Department in collaboration with the St. John Ambulance Service after a decade long absence is an achievement made by the Excise College during the year 2017. Chief Inspectors of Excise, Excise Inspectors and 625 officers from other ranks could be given the said training.
4. In addition to the above, Excise College was able to organize a Tamil Language Proficiency Course with the support of the resource persons from the Department of Official Languages. 63 Officers attended said course. Being able to improve the quality of the courses, thereby contributing to capacity development of the entire staff is noteworthy accomplishment realized during this period.

Table 3.1- Details of Training Courses conducted by the Excise Training College in the year 2017

Serial No.	Date or Duration	Attendance	Institute Conducted	Subject	Grades Participated
1.	From 16.01.2017 to 18.01.2017	112	Sri Lanka Excise College - Panadaragama	Theoretical and Practical Training on Law and Law Enforcement	Excise Inspectors
2.	From 07.02.2017 to 13.02.2017	90	Sri Lanka Excise College - Panadaragama	Training on Establishment affairs for New Male & Female Guards	Male/Female Trainee Excise Guards,
3.	From 20.02.2017 to 21.02.2017	20	Sri Lanka Excise College - Panadaragama	First aid Training Course-1 st Group	Male/Female Excise Guards, Sergeants, Sergeant Majors
4.	From 22.02.2017 to 23.02.2017	31	Sri Lanka Excise College - Panadaragama	First aid Training Course-2 nd Group	Male / Female Excise Guards, Sergeants, Sergeant Majors
5.	From 27.02.2017 to 28.02.2017	42	Sri Lanka Excise College - Panadaragama	First aid Training Course-3 rd Group	Male / Female Excise Guards, Sergeants, Sergeant Majors
6.	From 02.03.2017 to 03.03.2017	39	Sri Lanka Excise College - Panadaragama	First aid Training Course-4 th Group	Male/Female Excise Guards, Sergeants, Sergeant Majors
7.	From 06.03.2017 to 07.03.2017	50	Sri Lanka Excise College - Panadaragama	First aid Training Course-5 th Group	Male/Female Excise Guards, Sergeants, Sergeant Majors
8.	From 09.03.2017 to 10.03.2017	35	Sri Lanka Excise College - Panadaragama	First aid Training Course-6 th Group	Male/Female Excise Guards, Sergeants, Sergeant Majors
9.	From 13.03.2017 to 14.03.2017	56	Sri Lanka Excise College - Panadaragama	First aid Training Course-7 th Group	Male/Female Excise Guards, Sergeants, Sergeant Majors
10.	From 16.03.2017 to 17.03.2017	34	Sri Lanka Excise College - Panadaragama	First aid Training Course-8 th Group	Male/Female Excise Guards, Sergeants, Sergeant Majors
11.	From 20.03.2017 to 21.03.2017	20	Sri Lanka Excise College - Panadaragama	First aid Training Course-9 th Group	Male/Female Excise Guards, Sergeants, Sergeant Majors
12.	From 29.03.2017 to 30.03.2017	08	Sri Lanka Excise College - Panadaragama	First aid Training Course-10 th Group	Male/Female Excise Guards, Sergeants, Sergeant Majors
13.	From 16.05.2017 to 17.05.2017	35	Sri Lanka Excise College - Panadaragama	First aid Training Course-1 st Group	Excise Inspector
14.	From 18.05.2017 to 19.05.2017	35	Sri Lanka Excise College - Panadaragama	First aid Training Course-2 nd Group	Excise Inspector
15.	From 22.05.2017 to 23.05.2017	32	Sri Lanka Excise College - Panadaragama	First aid Training Course-3 rd Group	Excise Inspector
16.	From 25.05.2017 to 26.05.2017	41	Sri Lanka Excise College - Panadaragama	First aid Training Course-4 th Group	Excise Inspector

Excise Department of Sri Lanka | Performance Report - 2017

17.	From 29.05.2017 to 30.05.2017	32	Sri Lanka Excise College - Panadaragama	First aid Training Course-5 th Group	Excise Inspector
18.	From 01.06.2017 to 02.06.2017	43	Sri Lanka Excise College - Panadaragama	First aid Training Course-6 th Group	Excise Inspector
19.	From 05.06.2017 to 06.06.2017	48	Sri Lanka Excise College - Panadaragama	First aid Training Course-7 th Group	Excise Inspector
20.	From 13.06.2017 to 14.06.2017	28	Sri Lanka Excise College - Panadaragama	First aid Training Course-8 th Group	Excise Inspector
21.	From 20.11.2017 to 12.12.2017	60	Sri Lanka Excise College - Panadaragama	Tamil Language Training Program	Chief Excise Inspector/Male & Female Excise Inspector

3.3 Local Training

Details of Local Training Courses conducted for the Officers of the Department in the year 2017 are as follows.

Table 3.2 - Details of Local Training Courses conducted in the year 2017

Serial No.	Date or Duration	Participation	Institute Conducted	Subject	Grades Participated
1.	From 05.01.2017 to 06.01.2017	43	National Dangerous Drugs Control Board	Training program on identification of narcotic drugs and psychotropic substances	Excise Inspectors
2.	From 19.01.2017 to 20.01.2017	34	National Dangerous Drugs Control Board	Training program on identification of narcotic drugs and psychotropic substances	Excise Sergeant Major, Excise Sergeant, Excise Guard
3.	From 01.02.2017 to 02.02.2017	30	National Dangerous Drugs Control Board	Training program on identification of narcotic drugs and psychotropic substances	Excise Inspector
4.	30 days (4 hours each on Saturdays/Sundays) From 17.02.2017 or 18.02.2017	02	Institute of Human Resource Development- University of Colombo	Tamil Language Diploma Course	Excise Inspector
5.	Every Tuesdays from 07.02.2017 to 25.07.2017	03	Secretariat for Persons with Disabilities	Building awareness in officers on communication media of the deaf and blind	02 Female and 01 Male Excise Guard
6.	From 16.02.2017 to 17.02.2017	02	Institute of National Labour Studies	Skill development program for receptionists and telephone operators	1 Female & 1 Male Excise Guard
7.	From 13.02.2017 to 14.02.2017	05	Fiscal Association	Management Assistant Training Course	Chief Accountant
8.	04.02.2017	01	Prague Training Institute	One day training workshop conducted by Prague Training Institute	Excise Guard
9.	21.02.2017	02	Department of National Archives	Course on national archives administration, management and conservation	Deputy Commissioner of Excise, Superintendents of Excise
10.	07.03.2017	03	Vocational Training Institute	Human Faith - National Human Resources Development Council	Excise Inspector
11.	From 03.05.2017 to 05.05.2017	04	SLIDA	Sharing knowledge and training on inquiries made on offences related to dangerous precursor drugs	Deputy Commissioner of Excise (HR),(Logistics), 02 Superintendents of Excise, Excise Inspector

12.	From 06.05.2017 to 07.05.2017	04	National Dangerous Drugs Control Board	UNODC ROSA Conference	Deputy Commissioner of Excise (HR),(Logistics), 02 Superintendents of Excise, Excise Inspector
13.	From 15.05.2017 to 17.05.2017	03	National Authority on Tobacco and Alcohol	Diploma course on public procurement and administration of contracts	02 Superintendents of Excise, Excise Guard
14.	19.06.2017-31.07.2017	01	Department of Archives	Book binding course	Office Assistant
15.	13.07.2017-14.07.2017	02	ADEMS Institute	Advanced course on Microsoft Office	02 Excise Inspectors
16.	17.07.2017-21.07.2017	08	MILODA	Executive training program on behavioral economics, Ethics and public policy for middle and senior level staff officers	Deputy Commissioner of Excise , 03 Assistant Commissioner of Excise 04 Superintendents of Excise
17.	25.07.2017-26.07.2017	02	DLC	Work Shop on information technology procurement management	Excise Inspector
18.	15.08.2017-16.08.2017	01	DLC	Work shop on international Auditing (Group 2)	Excise Inspector
19.	14.08.2017-18.08.2017 28.08.2017-03.09.2017 01.09.2017	04	SLIDA	Computer course	Excise Inspector
20.	21.08.2017-03.10.2017	01	Department of National Archives	Book binding course	Office Assistant
21.	14.08.2017-16.08.2017	02	MILODA	Public Sector Salary Payment System	Management Assistant
22.	23.08.2017-24.08.2017	02	MILODA	Technology for Management Assistant Service	Management Assistant
23.	29.08.2017	01	SLIDA	Seminar on Transforming Public Service	Addl. Commissioner General of Excise
24.	23.08.2017	22	Lion Beer Company	One day workshop on Malt liquor industry – 01 st batch	Chief Excise Inspector/Female & Male Excise Inspector
25.	25.08.2017	27	Lion Beer Company	One day workshop on Malt liquor industry – 02 nd batch	Chief Excise Inspector/Female & Male Excise Inspector
26.	08.09.2017	20	Lion Beer Company	One day workshop on Malt liquor industry – 03 rd batch	Chief Excise Inspector/Female & Male Excise Inspector

27.	12.09.2017	26	Lion Beer Company	One day workshop on Malt liquor industry – 04 th batch	Chief Excise Inspector/Female & Male Excise Inspector
28.	15.09.2017	24	Lion Beer Company	One day workshop on Malt liquor industry – 05 th batch	Chief Excise Inspector/Female & Male Excise Inspector
29.	19.09.2017	19	Lion Beer Company	One day workshop on Malt liquor industry – 06 th batch	Chief Excise Inspector/Female & Male Excise Inspector
30.	22.09.2017	21	Lion Beer Company	One day workshop on Malt liquor industry – 07 th batch	Chief Excise Inspector/Female & Male Excise Inspector
31.	26.09.2017	19	Lion Beer Company	One day workshop on Malt liquor industry – 08 th batch	Chief Excise Inspector/Female & Male Excise Inspector
32.	29.09.2017	31	Lion Beer Company	One day workshop on Malt liquor industry – 09 th batch	Chief Excise Inspector/Female & Male Excise Inspector
33.	26.09.2017-27.09.2017	4	National Productivity Secretariat	Two days Training workshop on new quality control tools and Sri Lankan Circles	Excise Inspector
34.	03.10.2017	16	Lion Beer Company	One day workshop on Malt liquor industry – 10 th batch	Chief Excise Inspector/Female & Male Excise Inspector
35.	10.10.2017	23	Lion Beer Company	One day workshop on Malt liquor industry – 11 th batch	Chief Excise Inspector/Female & Male Excise Inspector
36.	13.10.2017	32	Lion Beer Company	One day workshop on Malt liquor industry – 12 th batch	Chief Excise Inspector/Female & Male Excise Inspector
37.	11.12.2017-16.12.2017	3	National Institute of Language Training and Education	06 Days Training Program on Tamil Language for Public Sector	Excise Driver

3.4 Foreign Training Courses

Foreign Training Courses/ Programmes and workshops attended by the Departmental Officers in the year 2017 are given below.

Table 3.3- Details of Foreign Training Courses attended by the Departmental Officers in the year 2017

Serial No.	Designation	Name of the Participant	Country	Programme	Date or Duration
1.	Addl. Commissioner of General Excise(c.u.)	Mr.A.Bodaragama	Berlin, Germany	Tax Stamp Forum 2017	From 30.01.2017 to 01.02.2017
2.	Superintendent of Excise	Mr.L.J. Ranaweera	Malaya Wales International Open University- Malaysia		21.03.2017-29.03.2017
3.	Superintendent of Excise	Mr.H.W.D.Kulathunga	-do-	„	„
4.	Superintendent of Excise	Mr.Vijitha Gamanayake	-do-	„	„
5.	Superintendent of Excise	Mr.M.A.M.A.B.Abeykoon	-do-	„	„
6.	Addl. Commissioner of General Excise(c.u.)	Mr.A.Bodaragama	India	Tax Stamp Forum 2017	21.04.2017 05.05.2017
7.	Commissioner of Excise(Law Enforcement)	Mr.S.D.L.De Mellawa	Kathmandu, Nepal	South Asia Tobacco Control Leadership	07.05.2017 13.05.2017
8.	Inspector of Excise	Mr.L.S.Dambadivahewa	-do-	„	„
9.	Deputy Commissioner of Excise(HR)	Mr.K.Kumarasinghe	China	2017 Seminar on Alcohol Distribution Management & Promotion for countries along the silk road	16.05.2017 06.06.2017
10.	Superintendent of Excise	Mr.M.M.U.B.Senevirathne	-do-	„	„
11.	Superintendent of Excise	Mr.W..M.J.Weerasinghe	-do-	„	„
12.	Superintendent of Excise	Mr.C.J.A.Weerakkody	„	„	„
13.	Deputy Commissioner of Excise(Revenue)	Mr.M.W.K.Dissanayake	Bankok, Thailand	SEA Regional Forum to accelerate NCDs prevention & control in the context of the SDGs	08.10.2017 13.10.2017
14.	Inspector of Excise	Mr.A.T.Weeraman	Korea	Narcotic Crime Eradication & Investigation	15.10.2017 04.10.2017
15.	Adminstration Officer (Supplies)	Miss.C.J.P.Gajanayake	England	Diploma in Public Procurement & Contract Administration	14.11.2017
16.	Chief Inspector of Excise	Mr.Chanaka Nanayakkara	Unan Police College , China	Seminar on Drug Control for Sri lanka	04.12.2017 24.12.2017

17.	Chief Inspector of Excise	Mr.R.A.D.P.K.Senarathne	”	”	”
18.	Inspector of Excise	Mr.S.A.S.U.Sirimanna	”	”	”
19.	Inspector of Excise	Mr.E.J.L.P.S.Thilakarathne	”	“	“
20.	Excise Guard	Mr.G.A.M.S.Wijekoon	”	”	”
21.	Chief Inspector of Excise	Mr.P.N.Hemantha	“	“	“
22.	Excise Guard	Mr.G.P.D.Pushpakumara	”	”	”

Chapter 4 | Implementation of New Policies

4.1 Introduction

4.2 New Excise Notifications Issued & Implemented in 2017

4.1 Introduction

Following excise rules and regulations have been imposed in the year 2017 as a measure of further enforcement of the government policy of minimizing the use of liquor and tobacco and as a positive approach towards establishing an efficient control over liquor and tobacco industries.

1. Replacing the London Proof System used for the calculation of excise duty on alcoholic products with the Alcohol Percentage by Volume System and imposing similar taxes on Arrack and Country Made Foreign Liquor. (Excise Notification No.1000)
2. Expanding the tax base by declaring 06 varieties of non-potable spirits as excisable articles and introducing a new set of regulations and a tax on imported non-potable spirits. (Excise Notification Nos.999 and 1005)
3. Subjecting the raw materials used for the manufacture of spirits in distilleries and imposing a new tax on the same. (Excise Notification Nos.1001 and 1002)

4.2 New Excise Notifications Issued & Implemented in 2017

4.1 Table : New Excise Notifications issued & implemented within 2017

Excise Notification No.	Gazette No. & Date of Issue	Description	Effective Date
995	No.2009/45 10.03.2017	Taxes and regulations on import of foreign liquor (Cancellation of E.N. 989 & 990)	10.03.2017
996	No.2029/51 28.07.2017	Imposing new taxes and regulations on import of foreign liquor having rescinded the E.N. 995	28.07.2017
997	No. 2029/50 28.07.2017	New taxes and regulations on import of non potable spirits	28.07.2017
998	No. 2033/2 21.08.2017	Cancellation of E.N. 997	22.08.2017
999	No.2044/33 09.11.2017	Re-imposing taxes and regulations on import of non potable spirits	10.11.2017
1000	No. 2044/34 09.11.2017	Imposing new taxes on liquor	10.11.2017
1001	No. 2044/35 09.11.2017	Subjecting molasses, rice pulp, maize pulp, fruit pulp to the excise duties	09.11.2017
1002	No. 2044/35 09.11.2017	Excise ratios on raw material used manufacturing Ethanol	10.11.2017
1003	No. 2045/15 15.11.2017	Cancellation of E.N. 981	10.11.2017
1004	No. 2049/4 11.12.2017	Annual liquor License fees	01.01.2018
1005	No. 2050/11 19.12.2017	Excise duties on import of non potable spirits(A mendment of E.N. 999)	19.12.2017

Chapter 5 | Accounts Division

- 5.1 Introduction
- 5.2 Revenue Account
- 5.3 Funds Account
- 5.4 Appropriation Account
- 5.5 Analysis of Income and Expenditure
- 5.6 Advance Account
- 5.7 Logistics Division
- 5.8 Assets Account (Infrastructure)

5.1 Introduction

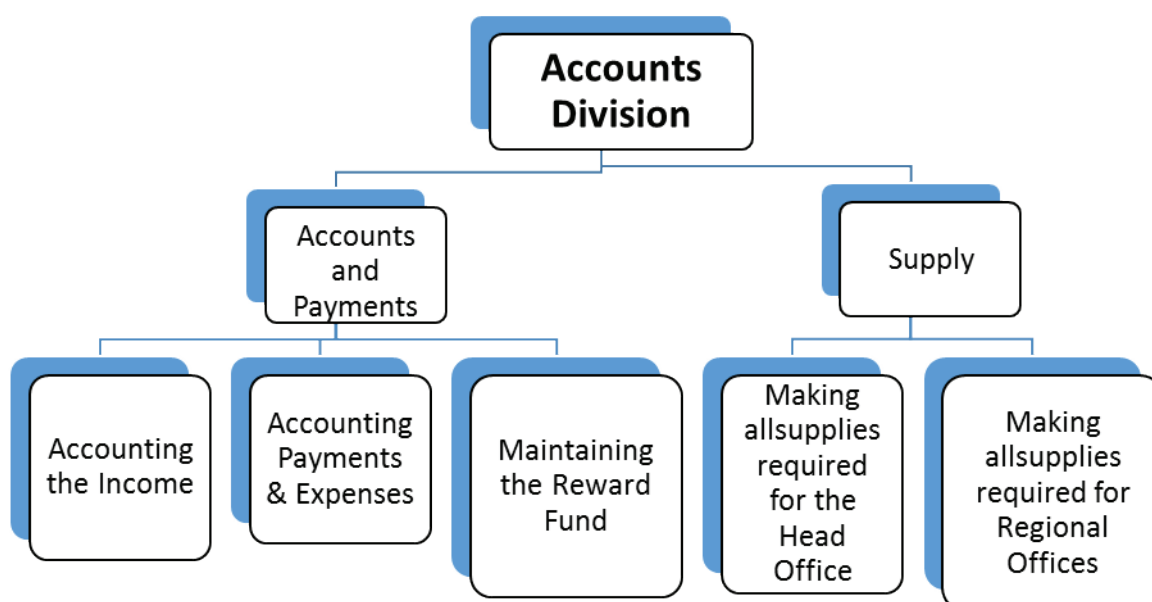
This Department has fulfilled all the duties related to excise revenue on behalf of the Sri Lankan Government in its history of over one hundred years. However, several of the revenue sources out of which we gathered income had to be transferred to Provincial Councils as per the 13th amendment to the Constitution. Revenue Sources thus transferred are as follows.

1. Annual Excise License Fees
2. Rent Sales
3. Court Fines

Yet, following taxes and fees are charged by the Department

<u>Government Revenue Head</u>	<u>Relevant Taxes and Fees</u>
1002-04-01	- All receipts related to Excise Duties <ol style="list-style-type: none"> 1. Excise Duties 2. Late Charges on Excise Duties 3. Purchase of Spirits (Local and imported) 4. License Fees 5. Excise License Application Fees 6. Renewal of Excise Licenses 7. Transfer of Excise Licenses, Change of Names and addresses 8. Charges on Toddy Collecting Centre
1002-06-00	- All receipts related to Tobacco <ol style="list-style-type: none"> 1. Tobacco Tax (Local and imported) 2. License fees for Tobacco Manufacturing 3. Application fees for Tobacco Manufacturing License 4. Renewal of Tobacco Manufacturing Licenses 5. Transfer of Tobacco Manufacturing Licenses, Change of Names and addresses 6. Late fees 7. Charges on storing tobacco products

Accordingly, the objective of our Division is fulfilling the needs of internal and external clients within a minimum period.



Main tasks carried out by the Accounts Division as per the above chart are as follows,

1. Collection of Excise Revenue
2. Incurring recurrent and capital expenses
3. Public Officers' Advance Account Activities
4. Supplying all departmental requirements
5. Maintaining the reward fund

Following activities are done by the Accounts Division parallel to the process of keeping accounts on the above tasks.

1. Preparing the revenue accounts for the excise revenue
2. Preparing the departmental appropriation account
3. Preparing the Public Officers' Advance Account
4. Preparing the final accounts for the reward fund

Accounts Division operated under the supervision of a Chief Accountant, Accountant (Payments), (vacant since 30/09/2017) and an Administrative Officer (Supply) in order to carry out above activities.

Under the supervision of the above administrative officers, a staff consisting of a Chief Public Management Assistant, an officer each for the tasks of preparing the revenue account, loan advances, reward fund and Shroff activities, 08 officers for accounting activities, 04 officers for preparing salaries, 03 officers for the supply unit and 02 office assistants serves this Division. Besides, carrying out the above tasks in a context where there are vacancies for the post of Accountant (Revenue) and the post of Accountant (Payments), which are considered to be indispensable posts for the Department, is a noteworthy achievement of the Division.

5.2 Revenue Account

This department gathers the Excise and Tobacco tax income intended for the Sri Lankan Government revenue and report on the same. Excise revenue of the previous years is given in the following chart.

Table 5.1 Revenue of Preceding Years

Year	Excise Duty (Rs.)	Tobacco Tax (Rs.)	Total Tax (Rs.)
2017	113,214,008,528.59	45,749,663.08	113,259,758,191.67
2016	120,238,067,703.00	39,819,451.00	120,277,887,154.00
2015	105,263,548,521.00	34,049,349.00	105,297,597,870.00
2014	69,087,998,769.00	35,606,823.00	69,123,605,592.00
2013	66,008,326,747.00	33,042,507.00	66,041,369,254.00
2012	60,046,840,535.00	34,344,008.00	60,081,184,543.00

5.3 Reward Fund Account

Excise Department operates a reward fund which is nourished by the composition fees imposed on acts of violating the excise license regulations and rewards are paid out of this Fund for persons who contribute to said tasks.

In addition to the above, 15% of the annual income of the reward fund is annually transferred to the Consolidated Fund. Receipts for the year 2017 was Rs.107.8 million and Rs.75.4 million have been incurred as rewards and other expenses while Rs. 20.3 million has been transferred to the Consolidated Fund.

Table 5.2 –Reward Fund Particulars

	2017(Rs.)	2016 (Rs.)	2015 (Rs.)
Receipts	107,865,650.16	136,954,590.16	182,849,713.71
Payments			
Composition fees	76,920,006.64	71,173,911.54	65,473,520.64
To Government consolidated Fund	20,339,023.78	21,933,811.92	30,028,575.95
For special raids	600,000.00	771,050.27	18,690.00
For trainings and academic activities	-	2,331,515.00	926,947.00
For sports, recreation and education	50,000.06	-	49,615.90
For buying library books	-	-	46,309.90
Purchasing furniture and equipment	3,939,940.00	1,194,000.00	7,414,972.65
Total Expenditure	209,714,620.64	97,404,288.73	103,958,632.04

5.4 Appropriation Account

All expenses required for fulfilling departmental objectives are made from this account.

Table 5.3 Appropriation Account

Type of Expenditure	Estimated Provision (Rs.)	Expenditure (Rs.)
Personnel Remunerations	666,942,000	656,786,151
Other Recurrent	372,561,000	149,731,758
Capital	272,520,000	160,363,854
Total	1,312,023,000	966,881,763

5.5 Analysis of Income and Expenditure

Excise Department of Sri Lanka generates income through two main sources. Income generated in the year 2017 is given below,

Excise Revenue	-	113,214,008,528.59
Tobacco Tax Revenue	-	<u>45,749,663.08</u>
Total Revenue	-	<u>113,259,758,191.67</u>

Departmental expenditure can be categorized as recurrent and capital. Expenditure incurred in 2017 is as follows

Recurrent Expenditure	-	806,517,909
Capital Expenditure	-	<u>160,363,854</u>
Total Expenditure	-	<u>966,881,763</u>

In comparison of above information, it is evident that the Department has been able to render a greater contribution (compared to the expenditure) to raise the government income by incurring less expenses.

Total Income	-	113,259,758,191.67
Total Expenditure	-	<u>966,881,763.00</u>
Income over the Expenditure	-	<u>112,292,876,428.67</u>

Table 5.4 Income and Expenditure Details

Item	2015 (Rs.)	Percentage (%)	2016 (Rs.)	Percentage (%)	2017 (Rs.)	Percentage (%)
Total Income	105,480,447,583.88		120,144,841,744.07		113,259,758,191.67	
Recurrent Expenses	665,083,572.46	0.63	743,099,701.64	0.62	806,517,909.00	0.71
Capital Expenses	147,461,093.61	0.14	240,881,055.64	0.60	160,363,854.00	0.41
Total Expenditure	812,545,666.07	0.77	983,980,757.28	0.82	966,881,763.00	1.12

5.6 Advance Account

This Division provides loan advances for 1291 officers of the staff from the Government Officers Advance Account. An amount of Rs. 44,989,006.00 has been given out by this account as distress loans for 255 officers ,special advances for 49 officers and festival advances for 874 in the year 2017.

Table 5.5: Advance Account Particulars

Description	2017		2016		2015	
	Amount allocated for the Department	Actual value	Amount allocated for the Department	Actual value	Amount allocated for the Department	Actual value
Maximum	45,000,000.00	45,572,284.00	38,000,000.00	37,976,126.61	32,000,000.00	23,058,081.00
Minimum Receipt Limit	34,000,000.00	34,426,562.43	30,000,000.00	31,465,892.89	25,000,000.00	31,189,482.90
Maximum Debit Limit	177,000,000.00	140,236,317.26	171,000,000.00	129,234,392.84	170,000,000.00	122,724,159.12

5.7 Logistics Division

Logistics Division of the Excise Department of Sri Lanka consists of a staff of 02 Public Management Assistants, 01 Development Officer, 01 Office Assistant and pool of 13 drivers under the Deputy Commissioner of Excise(Logistics). A new Excise Station was built and opened for duties while building repairs were done in six Excise Stations .Moreover, there are 03 offices to be opened in 2018 having completed constructions.

5.8 Assets Account (Infrastructure)

Table 5.6-Assets (Infrastructure) Details

	District/D.S Office where the property is located	Name of the Property	Extent of Land	Ownership of Property	If a Transfer, No.& date	Nature of the land whether the land is Empty or with Buildings
1	Colombo/ Sri Jayawardenapura Kotte	Excise Head Office- Rajagiriya ,514 D,Walikada South Gramaniladhari Division,Walikada	30.26 Perches	Given by the Urban Development Authority.	No.10/8/2318 dated 13.06.2013 Letter of the Director , Urban Development Authority	Constructions are in the final stage
2	Colombo - Padukka	Excise Station- Padukka	21.8 Perches	Ownership has been handed over to the O.I.C Excise Station-Padukka by Divisional Secretary,Padukka	No. පාල/2/෧෧3 dated 04.06.2004 Letter of the Divisional Secretary,Padukka	With buildings
3	Colombo – Kasbawa	Excise Station- Kasbawa	20 Perches	Ownership has been handed over to the Excise Department by Divisional Secretary, Kasbawa	No. පා.෧෧.3/2/236 / dated 07.12.2004 Letter of the Divisional Secretary, Kasbawa	With buildings
4	Kalutara- Kalutara	Office of the Assistant Commissioner of Excise- Pitagonelijawatta,Kalutara (W.P.II)	.01881 Hectares	Transferred to the Assistant Commissioner of Excise(W.P.II) by the certificate of transferring lands to Government Department	Divisional Secretary's No.4/6/1/86Provincial Land Commissioner's No - ප.ඉකො/ඉ/11/කප/04, Commissioner General of Land No.4/14/1924 12.12.2014	With buildings
5	Kalutara/Kalutara	Office of the Superintendent of Excise, Excise Station-	1300 Sq.ft	Land owned by the Department.		With buildings

6	Kalutara/Beruwala	Excise Station-Aluthgama	0.067 Hectares	Land received by the Commissioner of Lands	No 41/7/6653 dated 31.12.2002 letter of Commissioner General of Land	With buildings
7	Kalutara-Horana	Aramanagolla	30 perches (1090 Hectares)	Land received by the Divisional Secretary ,Horana	No.6/5/2/55dated 27.04.2001 Letter of the Divisional Secretary, Horana	With buildings
8	Gampaha-Gampaha Walwawatta	Excise Station-Yakkala-East Gampaha	0.1060 Hectares (40 perches)	Land received by the Divisional Secretary Gampaha	No. 08/9/26/2/2/57 dated 13.10.1999 Letter of the Divisional Secretary Gampaha	With buildings
9	Gampaha-Meerigama	Excise Station-Osmire Watta, Meerigama	0.0883 Hectares (34.9 perches)	Government Land transferred by the certificate of transferring lands to Government Department	Divisional Secretary's No. 08/9/26 Provincial Land Commissioner's No - 08/9/26/2/2/57 dated 13.10.1999 Letter of the Divisional Secretary Gampaha	With buildings
10	Kandy - Gagawata Korale	Office of the Assistant Commissioner of Excise, Kandy Office of the Superintendent of Excise, Excise Station	1920 Sq.Ft	Land owned by the Excise Department since 1940	No.4/4/633 -15.03.2010	With buildings
11	Nuwara eliya - do	Circuit Bungalow ,Nuwaraeliya - Hawaeliya Craton Village	85.03 Perches	Land received from the Residential Manager of Mahaweli Economic Agency	Letter No. 08/9/26/2/2/57 dated 14.06.1991	With buildings
12	Nuwara eliya - do	Office of the Superintendent of Excise, Excise	25.03 Perches / 1276 Sq Ft	Land received from the Residential Manager of Mahaweli Economic	Letter No. 08/9/26/2/2/57 dated 14.06.1991	With buildings

	Station	Craton	304 Sq Ft	Agency		
13	Hambanthota - Thissamaharamaya	Craton Village, Nuwaraeliya	40 Perches	Land received from the Divisional Secretary, Thissamaharamaya	No. 2/6/1/63 dated 15.07.1997 Letter of the Divisional Secretary, Thissamaharamaya	With buildings
14	Hambanthota - Hambanthota	Thissamaharama Holiday Resort , Mahasenpura	9.64 Perches	Land owned by the House Development Authority	Assistant Commissioner of Excise has been informed to take necessary action without delay	With buildings
15	Hambanthota - Tangalle	Kotawalamulla	0.0662 Hectares	Land owned by Department	Purchased by the House Development Authority	With buildings
16	Galle- Four Gravet	Katangahawatta - Excise Station Tangalle	30 Perches	Government Land	Land handed over to the Department by letter No. 2/6/1/63 dated 15.07.1997 of the Divisional Secretary, Four Gravet, Galle dated 26.02.2007	With buildings
17	Galle Elpitiya	Office of the Assistant Commissioner of Excise Kurunduwatta , Galle	0.0506 Hectares	Land received from the Divisional Secretary , Elpitiya	No. 4/3/3 dated 19.01.2006 Letter of the Divisional Secretary, Elpitiya	With buildings
18	Polonnaruwa - Thamankaduwa	Office of the Superintendent of Excise, Excise Station, Kurunduwela - West Polonnaruwa	02 Roots. 29 perches	Land owned by Department		With buildings
19	Polonnaruwa - Thamankaduwa	Excise Holiday Resort - Polonnaruwa	01 Roots. 34 perches	Land received from the Divisional Secretary , Thamankaduwa	No. 2/6/1/63 dated 15.07.1997 with no date 10.2004 Letter of the Divisional Secretary, Thamankaduwa	With buildings
20	Anuradhapura East, Nuwaragama Palatha	Office of the Superintendent of Excise, Excise Station,	3744 Sq.ft	Land owned by Department		With buildings

Excise Department of Sri Lanka Performance Report - 2017					
21	Anuradhapura East, Nuwaraga m Palatha	Anuradhapura Excise Holiday Resort – Anuradhapura	2916 Sq.ft	Land owned by Department	With buildings
22	Anuradhapura/ kebithigollawa	Excise Station kebithigollawa	02 roots	Land received from the Provincial Commissioner of Land. Ownership has been handed over to the Excise Commissioner by Divisional Secretary, kebithigollawa	With buildings
23	Kurunegala - Kurunegala	Paddy Field Land for Training Center and Excise Station (Assistant Commissioner of Excise(North Western Province)	02 Roots. 20 perches	Ownership has been handed over to the Excise Commissioner by Divisional Secretary, Kurunegala	With buildings
24	Kurunegala - Bamunakotuwa	Training College, Panadaraga ma		Ownership has been handed over to the Deputy Excise Commissioner by Divisional Secretary, Bamunakotuwa	With buildings
25	Kurunegala – Kuliyapitya, We st	Excise Station Kuliyapitya	02 Roots. 34 perches	Land owned by Department	With buildings
26	Kurunegala- Maho	Excise Station Kurudugahayaya - Maho	0.1012 hectares	Government Land transferred to the Excise Superintendent, Kurunegala by the certificate of transferring lands to	With buildings

				Government Department	No.4/14/658 .05.05.2010	
27	Puttalam- Puttalam	Excise Station - Puttalam Plains Puttalam	01329 hectares / 01 Roots. 12 .5 perches	Government Land transferred by the certificate of transferring lands to Government Department	Divisional Secretary's No. අනු/07/63 Provincial Land Commissioner's No - පළාත/ඉකො/06/අනු/07, Commissioner General of Land No.4/14/47 28.11.2007	With buildings
28	Puttalam- Madampe	Excise Station Madampe	0.1516 hectares	Undisputed ownership has been handed over. (O.I.C Excise Station Madampe -	Land handed over to Mr.B.H.Pereis,O.IC by letter No. 0෧/3/3/1/100of Divisional Secretary, Madampe dated 15.02.2006	With buildings
29	Puttalam- Wennapuwa	Office of the Assistant Commissioner of Excise,Bogahavita, Waikkala, Office of the Superintendent of Excise, Naththandiya Excise Station Wennapuwa	0.101 hectares	Ownership has been handed over to the Excise Commissioner by Divisional Secretary, Wennapuwa	Divisional Secretary's No. 0෧/අ.0෧/ඉඅනු/අරාබදු dated 29.07.2002 Provincial Land Commissioner's No - පළාත/ඉකො/04/0෧නු-dated 11.03.2002	With buildings
30	Puttalam- Chilaw	Inginiwatta alias Gamsbha watta	0.0759 hectares	Government Land transferred as per the certificate of transferring lands to Government Department Divisional Secretary, Chilaw to the	Ownership has been handed over to the Excise Department by Divisional Secretary, Chilaw on 27.07.2015 D.S.No.CHI/LNDI/TRANS/3/19/ 14	Tenders have been invited.

					D.C.E (Admin)				
31	Mannar	Excise Station Mannar	0.0517 Hectares		Land allocated to the Department by Commissioner General of Land	Commissioner General of Land No.4/14/190 16.12.2009 Letter dated 09.06.2010 of Divisional Secretary, Mannar	With buildings		
32	Trincomalee	Excise Station Oris Hill, Trincomalee	-		Informed to carry out survey activities anew	Assistant Commissioner of Excise (E.P) has been informed to take necessary action in this respect without delay .	With buildings		
r3 3	Batticaloa - Kalamunai East	Excise Station Complex, Kalladi-Batticaloa	30 Perches		Land received from the Divisional Secretary, Kalamunai	Letter No. බීඑස්/එම්එන්/එල්බී/සී/377 of Divisional Secretary, Kalamunai	With buildings		
34	Ampara-Ampara	Excise Station Indrasarapura, Ampara	0.1200 Hectares		Government Land	Application for allocating government lands for various departments has been forwarded to the Deputy Commissioner of Land, Ampara Assistant Commissioner of Excise has been informed to take necessary action in this respect without delay .	Tenders have been called		
35	Vauvniya - Vauvniya	Office of the Superintendent of Excise, Vauvniya, Excise Station	0.1154 Hectares		Land received from the National House Development Authority	Letter No. 27/03/11/13/02/03 of District Manager of NHDA dated 14.08.2003	With buildings		
36	Kilinochchi-Karawita	Karawita	15 Perches		Land owned by the Government Agent, Kilinochchi	Assistant Commissioner of Excise has been informed to take necessary action in this respect	With buildings		

Excise Department of Sri Lanka Performance Report - 2017						
						without delay .
37	Monaragala - Ambilipitiya	Excise Station Pallegama, Parani Kadawura Watta, Ambilipitiya	0.0506 Hec	Land transferred to the Excise Department by Mahaweli Authority (A.C.E CU-Sabaragamuwa)	transferred to the Excise Department by specimen Form 200 for transferring assets of Maweli Authority to line institutes .	With buildings
38	Rathnapura / Rathnapura New Town	Office of the Assistant Commissioner of Excise	80 Perches	Land transferred to the Excise Department by Divisional Secretary, Rathnapura (A.C.E-Sabaragamuwa)	Land has been allocated to the Excise Department by the letter dated 28.12.1998 Divisional Secretary, Rathnapura	With buildings
39	Monaragala -/ Monaragala	Excise Station & Official Quarter , Karapinchagala Mookalana, Monaragala	02 Roots 5 Perches(0.21 Hectares)	Land owned by the Divisional Secretary, Monaragala	Assistant Commissioner of Excise has been informed to take necessary action in this respect without delay .	With buildings
40	Badulla - Bandarawela	Excise Station Hapugasarame watta -Bandarawela	0.1018 Hectares	Government Land transferred by the certificate of transferring lands to Government Department	Land received as per the Divisional Secretary's No. බණ/3/4/ට.ආ./13 & Provincial Land Commissioner's No - UPLC/L/4/BW/10, dated 20.07.2009 Letter	With buildings
41	Badulla - Badulla	Excise Station - Kanupallala-Badulla	25 Perches	Land owned by Department		With buildings
42	Matara / Waligama	Office of the Superintendent of Excise, Excise Station, Kotawilawatta, Kandaketiya	02201 Hectares / 80 Perches	Ownership of the land of Survey General's No. එම්ආබ්/බීඑම්එල්/2014/476 has been handed over .	Ownership has been handed over by the letter of Assistant Divisional Secretary, Weligama dated 11.08.2015	With buildings

watta/Kanankewewa watta, Matara District,

Chapter 6 | Auditing

- 6.1 Introduction
- 6.2 Internal Audit Division

6.1 Introduction

Internal audit unit is entrusted with the responsibility of reporting to the Head of the Department having carried out independent evaluations on the effectiveness of the internal systems of the department and coordinating the Head of Department with the officers who are assigned various departmental duties.

Specially, Internal Audit Division creates the environment for the Head of Department to take necessary and urgent measures to remedy the risk areas related to financial control having conducted Audit and Management Committees on time with the participation of the Departmental Head and a representative from the Auditor General's Department.

In addition to the above, Internal Audit Division assists to reinforce the existing administrative system having studied the weaknesses in administrative systems through identification and focusing on the risk areas in procedures pursued for achieving departmental goals while implementing internal audit programmes prepared in line with the changes of the management and financial environment which exists in the Department.

6.2 Internal Audit Unit

Activities of the Internal Audit Division have been carried out based on the internal audit plan of the year 2017 under the direct supervision of the Commissioner General of Excise.

It has also proposed internal control methods required to avert the defects which could be observed in processes of collecting revenue under the Excise Rules and Regulations and financial management in order to achieve departmental goals.

It has given observations having audited Rockland Distilleries (Pvt) Limited, Hingurana Manufactory, Moragalla & Acme Lanka Manufactories and Mendis & Hingurana Distilleries under the program of auditing regional offices .

06 Management Audit Committee meetings have been conducted under the patronage of the Commissioner General of Excise and the participation of all staff officers in the Excise Head Office and the Audit Superintendent of the Government Audit Unit in the year 2017. Measures have been taken to implement the decisions taken at Management Audit Committee meetings held at the ministry through all staff officers and to discuss the observations and issues raised by Auditor General's queries and internal audit reports.

Although it was able to audit regional offices, It was not able to carry out its operations adequately as per the Audit Plan as it had to monitor and expedite the construction of the new building for the Excise Head Office which was till then maintained in a rented building with the view of commencing duties of the year 2017 at the new building.

Internal Audit Division has been able to guide the Department to achieve its aims and targets through all these programs.

Chapter 7 | Revenue Operations Division

- 7.1 Introduction
- 7.2 Types of Excise Licenses
- 7.3 Excise Licenses which operated in the year 2017
- 7.4 Information Technology Unit

7.1 Introduction

License Division which operates under the Commissioner General of Excise and the Additional Commissioner General of Excise (Revenue Operations and Law Enforcement)(c.u) is supervised by the Deputy Commissioner of Excise (Revenue) and the Deputy Commissioner of Excise (Supply Chain Regulation & IT).

This Division carries out tasks related to granting approval to Divisional Secretaries to issue licenses for selling liquor, directly issuing licenses for liquor manufactories, distilleries, stores/warehouses and vinegar manufactories, issuing new licenses, annual renewals and related tasks, granting approval for all activities of the liquor industry including manufacturing of liquor and issuing of spirits .In addition to above, it issues all island liquor transport permits and also maintains files pertain to all liquor licenses.

7.2 Types of Excise Licenses

Types of Excise licenses issued by this Department:-

F.L. 1	: Licence to manufacture malt liquor
F.L. 1 A	: Licence to manufacture country made foreign liquor
F.L.1 B	: Licence to manufacture, milk punch and/or wine
F.L.1 C	: Licence to manufacture country made foreign spirits from spirits distilled from the coconut or any of its products other than toddy.
F.L 3	: Wholesale Licence for liquor
F.L 4	: Retail Licence for liquor
F.L 5	: Foreign Liquor Tavern License
F.L 7	: Hotel Licence
F.L 8	: Hotel Bar Licence
F.L 9	: Entertainment Bar Licence for Cinemas
F.L 10	: Railway Restaurant Licence
F.L 11	: Restaurant Licence
F.L 12	: Rest House Licence
F.L 13	: Proprietary Club License
F.L 13 A	: Members only Clubs/Social Club Licence
F.L 14	: Occasional Licence
F.L 15	: Supplementary Licence to extend the hours of sale.
F.L 16	: Auctioneer's Licence
F.L 17	: Rectified Spirits Licence
F.L 18	: Medicated Wine Licence
F.L 22 A	: Licence for retail sale of Beer, Ale, Stout and Wine
F.L 22 B	: Licence for consumption of Beer, Ale, Stout and Wine at the premises
	: Special Licence issued under the Excise Notification936

- : Licence for Storage and Warehouses
- : Licence for distributing (Manufacturers' Wholesale)
Arrack/Beer/Foreign liquor
- : Licences for manufacturing Industrial Products using Ethyl Alcohol
- : Licence for selling wine spirits
- : Licence for the importation and possession of non-potable spirit
- : Licence for manufacturing & selling processed/ Molasses/ Palmyra/
Special/ Coconut Arrack, and /or for manufacture & issue to the
wholesale outlets.
- : Distillery License
- : License to manufacture Vinegar
- : License for bottling toddy
- : License to collect toddy
- : License for bottling
- : License for production and sale of fermented toddy
- : License for exporting liquor
- : License for importing foreign liquor
- : License for Toddy Taverns sold by Tender.
- : License for importing foreign liquor
- : License for manufacturing tea cider
- : Toddy and Arrack licence for Estate Canteens
- : Special Three year approval for hotels (Boutique Villas)
- : Auxiliary Licenses
 - License for selling Arrack (A.F.L. 1,
A.F.L. 2,A.F.L.3,A.F.L.4
 - License for selling bottled toddy

7.3 Excise Licenses issued & operated in the year 2016

Table 7.1 Number of Distillery and Manufactory Licenses operated in the financial year of 2017

Table 7.2 Number of foreign liquor Licenses operated in the financial year of 2017

Table 7.3 Number of foreign liquor Licenses operated in the financial year of 2017

Table 7.4 New Licenses issued from 2005 to 2017

Table 7.1 Number of Distillery and Manufactory Licenses Operated in the Financial Year of 2017

District	Licenses for Spirit Distilleries	Licenses for Arrack Manufactories	Licenses for Country made foreign liquor manufacturing licenses	licenses for manufacturing medicinal preparations including Eau-de-cologne	Licenses for Vinegar Manufactories	Beer Manufacturing Licenses	A.M06	Grand Total
Colombo	1	6	2	23	-	-	12	44
Gampaha	2	7	4	7	-	1	10	31
Kaluthara	4	5	3	3	7	-	4	26
Kandy	-	3	1	1	-	-	9	14
Matale	-	-	-	-	-	-	-	-
NuwaraEliya	-	-	-	-	-	-	5	5
Galle	-	-	-	-	-	-	5	5
Matara	-	-	-	2	-	-	-	2
Hambantota	-	-	-	-	-	-	3	3
Jaffna	2	2	-	-	-	-	4	8
Mannar	-	-	-	-	-	-	-	-
Vavuniya	-	-	-	-	-	-	3	3
Kilinochchi	-	-	-	-	-	-	-	-
Batticaloa	-	-	-	-	-	-	5	5
Ampara	1	-	-	-	-	-	-	1
Trincomalee	-	-	-	-	-	-	3	3
Kurunegala	1	1	-	-	-	1	6	9
Puttalam	1	-	-	-	-	-	5	6
Anuradhapura	-	-	-	-	-	-	7	7
Polonnaruwa	-	-	-	-	-	-	1	1
Badulla	-	2	-	-	-	-	6	8
Monaragala	2	-	-	-	-	-	-	2
Rathnapura	-	-	-	-	-	-	6	6
Kegalle	-	-	-	-	-	-	-	-
Mullaitivu	-	-	-	-	-	-	-	-
Total	14	26	10	36	7	2	94	189

Table 7.2 Number of foreign liquor Licenses operated in the financial year of 2017

District	Foreign Liquor wholesales licenses FL-3	Foreign Liquor Retail licenses FL-4	Foreign Liquor Tavern License FL-5	μ Hotel Licenses FL-7	Hotel bar Licenses FL-8	Entertainment bar licenses FL-9	Railway restaurant FL-10	Restaurant FL-11	Rest House FL-12	Proprietary Club License-FL13	Members Only Club licenses F.L.13A	Rectified spirits license FL-17	Grand Total
Colombo	15	193	3	94	190	7	2	196	2	1	42	-	745
Gampaha	12	126	-	101	121	4	-	89	-	-	3	1	457
Kaluthara	2	24	1	44	70	5	-	12	5	-	1	-	171
Kandy	1	79	3	55	69	1	-	26	4	1	6	1	246
Matale	-	27	-	32	34	-	-	12	1	-	1	-	107
NuwaraEliya	1	112	5	25	28	1	-	24	3	-	3	-	202
Galle	3	49	-	92	130	1	-	25	1	-	1	-	302
Matara	-	30	-	29	30	3	-	13	3	-	9	-	117
Hambantota	1	15	-	21	25	3	-	2	1	-	-	-	68
Jaffna	2	27	-	15	16	2	-	10	-	-	5	-	77
Mannar	-	4	-	1	1	-	-	3	1	-	1	-	11
Vavuniya	-	11	-	5	6	1	-	4	1	-	-	-	22
Kiinochechi	-	-	-	2	2	-	-	-	-	-	-	-	4
Batticaloa	1	22	-	12	14	-	-	7	1	-	-	-	57
Ampara	-	21	-	8	08	-	-	5	1	-	1	-	44
Trincomalee	-	13	-	14	19	2	-	7	-	-	-	-	53
Kurunegala	1	56	-	25	25	2	-	21	4	-	-	-	134
Puttalam	-	33	2	9	14	3	-	9	4	-	1	-	75
Anuradhapur	2	46	-	30	32	-	-	5	1	-	-	-	116
Polonnaruwa	-	16	-	18	20	-	-	6	1	-	-	-	61
Badulla	2	51	-	27	28	1	-	19	3	-	2	-	133
Monaragala	-	24	-	15	17	-	-	6	2	-	1	-	65
Rathnapura	1	61	-	12	19	4	-	15	3	1	-	-	116
Kegalle	-	37	-	17	17	3	-	15	1	-	2	-	92
Mullaitivu	-	1	-	2	2	-	-	2	-	-	-	-	7
Total	44	1,078	14	705	937	43	2	533	43	3	79	2	3483

Table 7.3 Number of foreign liquor Licenses operated in the financial year of 2017

District	Beer, Ale, Stout, and wine license for retail sale 22A	Beer, Ale, Stout, and wine license for consumption in the premises 22B	Special Three Year Approval for Boutique Villas	Estate Canteen Selling Arrack	Toddy Tavern Licenses	Estate Canteen Selling Toddy	Bottled Manufactory Licenses	Toddy	Arrack Wholesale Licenses	Grand Total
Colombo	30	17	16	-	4	-	-	-	-	71
Gampaha	40	49	4	-	26	-	1	-	4	128
Kaluthara	8	6	4	-	1	1	-	-	4	24
Kandy	15	13	3	-	2	2	-	-	-	32
Matale	9	12	5	-	-	-	-	-	-	26
NuwaraEliya	16	4	3	-	5	-	-	-	-	28
Galle	5	16	8	-	-	-	-	-	-	28
Matara	1	1	2	-	-	-	-	-	-	4
Hambantota	-	4	6	-	-	-	-	-	1	11
Jaffna	-	-	1	-	107	-	20	-	2	130
Mannar	1	1	-	-	24	-	-	-	-	26
Vavuniya	3	-	-	-	41	-	-	-	-	44
Kilinochchi	-	-	-	-	50	-	-	-	-	50
Batticaloa	9	2	5	-	6	-	-	-	3	25
Ampara	1	2	-	-	-	-	-	-	-	4
Trincomalee	2	1	2	-	3	-	-	-	1	9
Kurunegala	14	5	-	-	5	-	-	-	-	24
Puttalam	14	7	1	-	24	-	13	-	-	46
Anuradhapura	2	5	2	-	1	-	-	-	1	11
Polonnaruwa	4	2	-	-	-	-	-	-	-	6
Badulla	17	2	-	-	2	5	-	-	-	27
Monaragala	7	7	-	-	-	-	-	-	-	14
Rathnapura	2	5	-	2	2	2	-	-	-	13
Kegalle	5	5	-	-	-	-	-	-	-	10
Mullaitivu	-	-	-	-	24	-	-	-	-	24
Total	210	173	62	2	327	10	34	16	16	822

Table 7.4 New Licenses issued from 2005 to 2017

Year	Number of New Licenses issued
2005	132
2006	35
2007	42
2008	36
2009	40
2010	51
2011	41
2012	55
2013	62
2014	83
2015	52
2016	38
2017	10

7.4 Information Technology Unit

Implementing the Government IT Policy by improving the IT related knowledge and skills of the staff and creating an environment with proper infrastructure within the Department in order to facilitate the effective utilization of modern information technology is the main objective of this Unit.

This unit was operated under the supervision of the Deputy Commissioner of Excise (Supply Chain Regulations & IT) and a staff consisting of 04 Excise Inspectors, 01 IT Officer, 01 IT Assistant, 02 Excise Guards and 01 Female Excise Guard was attached to the it.

Necessary measures are being taken to obtain IT assistance to the Department under the Public Sector Efficiency Strengthening Project (PSESP) which is implemented by the World Bank and the European Union. Approval of the Ministry of Finance has been granted to receive an IT Solution to the Excise Department and the consent has been expressed by the Information & Communication Technology Agency to render the required consultancy and resources for this endeavor. Accordingly, as the initial phase of the above, software development activities pertaining to creating a web interface by our department for the RAMIS Project implemented by the Department of Inland Revenue are at its final stage at the moment.

Updating and maintaining the official web site is one of the key roles of the IT division and the redesigning of the website has been completed in this year and it is expected to be launched in 2018 with the intension of providing a higher customer service using advanced modern information technology.

It has carried out 140 maintenance services related to computers and accessories and 32 repairs with new computer spare parts of the regional excise stations located island wide in the year 2017. These measures help to maintain the information communication link between the Head Office and the regional offices in a productive and efficient manner.

Moreover, this unit extends its assistance to monitor and maintain the software system (LRARS) which operates in the license division for registration and issuing of liquor licenses and thereby assists to provide customers a faster service.

Feeding data to the software pertain to payment of rewards to the officers serving in the Department and obtaining relevant reports are done by this unit and Rs. 80,295,728.57 of reward allowances for officers have been calculated with computer assistance for Rs. 161,561,986.40 of composition fees charged with respect to 6450 Technical Crime Reports and submitted to the Accounts Division for the year 2017. Therefore, it has been able to render the support to the Accounts Division for paying relevant rewards having calculated accurate reward amounts.

In addition to the above, IT Unit extends its services by way of identifying the IT requirements of the Department, gathering relevant information, assisting the Technical Evaluation Committees and by resource contribution for IT training courses.

Chapter 8 | Manufacturing of Liquor

- 8.1 Introduction
- 8.2 List of Licensed Liquor Manufacturers
- 8.3 List of liquor manufactories with Suspended Licenses
- 8.4 List of Licensed Distilleries
- 8.5 List of Licensed Stores and Warehouses
- 8.6 List of Licensed Vinegar Manufacturers
- 8.7 List of Excise Licensee for manufacturing industrial products
- 8.8 Liquor Production and Tax Income in 2017
- 8.9 Spirit Manufacturing /Issuing in 2017
- 8.10 Income Analysis

8.1 Introduction

Calculation of liquor tax income and operating the relevant computer data as well as maintenance of reports, data and documents pertain to liquor manufactories, warehouses and distilleries are carried out by the Revenue Division under the supervision of the Commissioner General of Excise, Additional Commissioner General of Excise (Revenue Operations and Law Enforcement) c.u. and the Deputy Commissioner of Excise (Revenue). This unit consisted of a staff of a Chief Inspector of Excise, 03 Inspectors of Excise, 01 Female Corporal and a female IT officer in the year 2017.

Liquor manufactories, warehouses and distilleries, toddy taverns and vinegar manufactories operate under the full supervision of the Excise Department. Local liquor (Arrack), country made foreign liquor, wine, sake, bottled toddy and beer are manufactured in manufactories. Arrack and foreign liquor are considered as hard liquor while toddy, wine and beer are considered as soft liquor.

Ethyl Spirits are manufactured in Distilleries; the spirits manufactured in Sri Lanka are categorized as Rectified Spirits, Coconut Spirits and Palmyrah Spirits. Coconut, and Palmyrah Spirits are distilled from Coconut and Palmyrah toddy while rectified spirits are distilled in Sevenagala and Palwatta Distilleries from Molasses, which is a byproduct of sugar production. Further, Ethyl Spirits are imported for liquor manufacturing and for industrial purposes.

05 liquor manufactories namely, Seeduwa Bandarawatta, Seeduwa new warehouse, Kalutara warehouse No.01, Nawayalathenna Warehouse and Badulla warehouse operated under Distilleries Company of Sri Lanka (Pvt)Ltd and 02 manufactories, namely, Walisara and Aluthgama operated under W.M.Mendis Company. In addition to above, 15 liquor manufactories were operated.

Graph 8.1 Hard Liquor (Arrack /Locally manufactured Foreign Liquor) Production in Proof litres (Million)

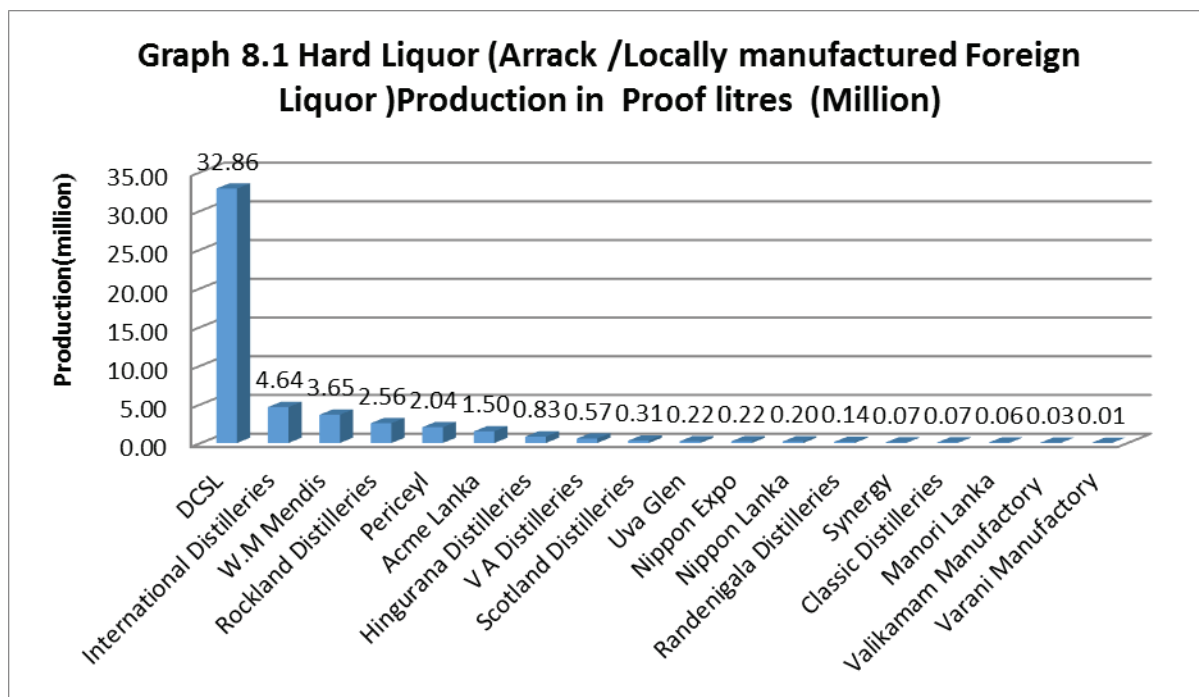


Table 8.1: Liquor Production

Hard Liquor (Arrack /Locally manufactured Foreign Liquor) Production in Proof litres (Million)

Manufactory	Special Arrack	Coconut Arrack	Molasses Arrack	Palmyra Arrack	Locally manufactured foreign liquor	Total liquor production (Proof litres)	Production percentage	Total liquor production (Bulk litres)	Consumption (Bulk Litres) *
Distilleries Company of Sri Lanka PLC(05 Manufacturing licences)	30.86	2.00	0.00	0.00	0.00	32.86	65.8%	55.53	
International Distillers Ltd(02 Manufacturing licences)	2.13	0.49	0.90	0.00	1.11	4.64	9.3%	7.76	
W.M Mendis & Company Ltd	0.12	1.79	1.47	0.00	0.27	3.65	7.3%	6.36	
Rockland Distilleries Ltd	0.16	0.96	0.65	0.00	0.78	2.56	5.1%	4.18	
Periceyl Company (Pvt) Ltd	1.21	0.00	0.05	0.00	0.78	2.04	4.1%	3.27	
Acme Lanka Company Ltd	1.45	0.05	0.00	0.00	0.00	1.50	3.0%	2.73	
Hingurana Distilleries Ltd	0.71	0.00	0.09	0.00	0.03	0.83	1.7%	1.51	
V & A Distilleries (Pvt.) Ltd	0.51	0.00	0.03	0.00	0.02	0.57	1.1%	1.05	
Scotland Distilleries Company Ltd	0.30	0.00	0.00	0.00	0.00	0.31	0.6%	0.56	
Uva Glen Company (Pvt) Ltd	0.18	0.00	0.04	0.00	0.00	0.22	0.4%	0.39	
Nippon Expo Company Ltd	0.21	0.01	0.01	0.00	0.00	0.22	0.4%	0.39	
Nippon Lanka Company Ltd	0.00	0.00	0.20	0.00	0.00	0.20	0.4%	0.38	
Randenigala Distilleries Ltd	0.13	0.00	0.01	0.00	0.00	0.14	0.3%	0.25	
Synergy Hotel & Holdings (Pvt.) Ltd	0.07	0.00	0.00	0.00	0.00	0.07	0.1%	0.13	
Classic Distilleries (Private) Ltd	0.03	0.01	0.03	0.00	0.00	0.07	0.1%	0.13	
Manori Lanka Company (Pvt) Ltd	0.03	0.00	0.03	0.00	0.00	0.06	0.1%	0.10	
Valikamam Distilleries	0.00	0.00	0.00	0.03	0.00	0.03	0.1%	0.05	
Varani Distilleries Ltd	0.00	0.00	0.00	0.01	0.00	0.01	0.0%	0.03	
Total	38.11	5.31	3.50	0.04	3.00	49.96	100%	84.80	

* Total liquor consumption has been given as a percentage of the hard liquor production of each manufactory .

8.2 List of Licensed Liquor Manufacturers

- I. Distilleries Company of Sri Lanka Ltd., 110, Norris Canal Road, Colombo 10
- II. Rockland Distilleries Ltd, No.160/24, Kirimandala Mawatha, Colombo 05
- III. International Distillers Ltd., Kotalawala, Kaduwela
- IV. W.M Mendis & Company Ltd., Welisara, Ragama
- V. Periceyl Company (Pvt) Ltd., No. 110, Norris Canal Road, Colombo 10
- VI. V A Distilleries (Pvt) Ltd, No.324, High Level Road, Galagedara, Padukka
- VII. Acme Lanka Company Ltd, No.73/1, Old Road, Hanwella
- VIII. Classic Distilleries (Pvt) Ltd, No.565, Mihindu Mawatha, Malambe
- IX. Manori Lanka Company (Pvt) Ltd, No.277/1, Jayamalapura, Gampola
- X. Nippon Expo Company Ltd., No. 152, Nagahakandawatta, Palugama, Dompe
- XI. Randenigala Distilleries Ltd., No. 255/86, Korathota, Kaduwela
- XII. Sri Lanka Distilleries Ltd, Mestiya, Wadduwa (No operation in 2016)
- XIII. Scotland Distilleries Company Ltd., Passara Road, Vineethagama, Badulla.
- XIV. Thikkam Distilleries, Wadamarachchi Palmyrah Coconut Development Society, Alwai, Point Pedro (No operation in 2016)
- XV. Uva Glen Company (Pvt) Ltd., Millewa, Moragahahena
- XVI. Valikamam Distilleries, Walikamam Palmyrah Coconut Development Society Navali, Maipay.
- XVII. Varani Distilleries Ltd. Thenmaarachchi Palmyrah Coconut Development Society, Point Pedro Road, Warani
- XVIII. Synergy Hotel & Holdings (Pvt.) Ltd. Payagala
- XIX. Royal Casks (Pvt.) Ltd., Galagedara, Padukka
- XX. Asia Pacific Brewery (Lanka) Ltd., Mawathagama
- XXI. Lion Brewery Ltd., No. 254, Colombo Road, Biyagama
- XXII. Hingurana Distilleries (Pvt) Ltd, Samanabadda, Thittapattara

8.3 List of Liquor Manufactories with Suspended Licenses

- I. Wayamba Distilleries (Pvt.) Ltd. – Malkaduwawa, Kurunegala
- II. Randiya Marketing Services (Pvt) Ltd., No. 7, Morukkuliya Mawatha, Dankotuwa.

8.4 List of Licensed Distilleries

- I. Distilleries Company of Sri Lanka PLC(Seeduwa Distillery)- Seeduwa
 - 1.1 Seeduwa Distillery- Seeduwa
 - 1.2 Beruwala Distillery-Beruwala
- II. W.M Mendis & Company Ltd -Aluthgama.
- III. Sri Lanka Distilleries Mestiya, Wadduwa
- IV. Rockland Distilleries -Marawila .
- V. Acme Distilleries -Wijeratna Watta,Dummalasooriya
- VI. Palwatta Distilleries - Palwatta.
- VII. Sewanagala Distilleries -Sewanagala
- VIII. Royal Casks Distilleries-Galagedara.
- IX. Varani Distilleries-Thenmaarachchi Palmyrah Coconut Development Society
- X. Varani Distilleries-Walikamam Palmyrah Coconut Development Society
- XI. Hingurana Distillery .Korambe,Dompe
- XII. Vavulugala Distillery,Maggonna,Payagala
- XIII. Cooperative Distillery-Payagala
- XIV. Thikkam Distillery-Wadamarachchi Palmyrah Coconut Development Society-Point Pedro
- XV. Galoya Plantation Ltd- Ampara

8.5 List of Licensed Stores and Warehouses

01. Distilleries Company of Sri Lanka PLC
 - i. Seeduwa Old Warehouse
 - ii. Seeduwa ,Warehouse No,03
 - iii. Kalutara ,Warehouse No,02
 - iv. Mirishena Warehouse
 - v. Thekkawatta Warehouse
 - vi. Nawayalathenna Warehouse
02. W.M Mendis & Company Ltd -
 - i. Walisara Warehouse
 - ii. Moragalla Warehouse
03. Periceyl Company (Pvt) Ltd, Nawayalathenna Warehouse
04. Rockland Distilleries
 - i. Marawila Warehouse
 - ii. Thittapattara Warehouse
05. International Distilleries- East India Warehouse,Kothalawala,Kaduwela
06. Walikamam Palmyrah Coconut Development Society-Walikamam Warehouse
07. Wadamarachchi Palmyrah Coconut Development Society -Thikkam Warehouse
08. Thenmaarachchi Palmyrah Coconut Development Society-Warani Warehouse

8.6 List of Licensed Vinegar Manufacturers

- I. C.D.Fonseka & Sons (Pvt) Ltd - Eluwila, Panadura.
- II. Yasara Vinegar Manufacturers-Vimal Vila ,Siripathi Para, Kaluwamodara , Aluthgama.
- III. Anuja Vinegar Manufacturers-Pitahena,Beruwala
- IV. Ranviru Vinegar -Kande Vihara Road,Kaluwamodara, Aluthgama.
- V. Sudu Pol Vinegar - AluthgamaKaluwamodara,
- VI. R.G.Marketing Vinegar Manufacturers-Darga Town.
- VII. Saviya Vinegar Manufacturers- Payagala.

8.7 Excise Licence Holders for Industrial Manufacturing

- i. International Cosmetics (Pvt) Ltd.,No.146, Dawson Street, Colombo.
- ii. Ansell Lanka Pvt Ltd., Biyagama Export Processing Zone, Biyagama.
- iii. Interfarm (Pvt) Ltd.,Madapatha Street, Piliyandala.
- iv. Plant Lipids (Pvt) Ltd.,No.60, Sir Anagarika Darmapala Mawatha, Colombo 03.
- v. Astern Ltd.,No.688, Galle Road, Ratmalana.
- vi. 609 Manufactures,,No.11/7, Darmapala Mawatha, Baddegama, Pita Kotte.
- vii. Nature's Beauty Creations, No.64/3, Kidelpitiya, Puswelhena, Millawa, Horana
- viii. H.D.D.E.S.Extracters (Pvt)Ltd.,No.309, Jayantha Weerasekara Mawatha, Colombo 10
- ix. Beauty Expert (Pvt) Ltd, No.73, 2nd Floor, Majestic City, Colombo 04.
- x. Department of Indigenous Medicines, Colombo Municipal Council, Maradana, Colombo -10
- xi. Sri Lanka Ayurvedic Drugs Corperation,No.94, Old Kotte Road, Navinna, Maharagama.
- xii. Hemas Manufacturing Ltd.,No.36, Bristol Street, Colombo -01.
- xiii. Ceylon Cold Stores, No.01, Justice Akbar Mawatha, Colombo -10.
- xiv. Pilapitiya Ayurvedic Manufactures,Amupitiyahena, Kuda Oduwa, Hoarana.
- xv. Tropic Fishery (Pvt) Ltd.,No.16/1, Tammita Street, Negambo.
- xvi. F.D.K.Lanka Drugs Company, Ring Road, 2nd Phase, Export Processing Zone, Katunayake.
- xvii. Bimal Herbal (Pvt) Ltd, No.02, Abaya Road, Kolonnawa.
- xxviii. Harumi Holdings (Pvt) Ltd, Poruwathanda, Horana.
- xix. C.B.L.Foods International (Pvt) Ltd, P.O.Box 01, Habarakada Road, Ranala.
- xx. P.B.Morawaka and Sons, Kottawa, Pannipitiya.
- xxi. Goya Medicines (Pvt) Ltd.,No.45 D/7, Kahatagahawatte, Meegoda.
- xxii. M.S.J.Industries Lanka (Pvt) Ltd.,No.16, Aluth Mawatha, Colombo 15.
- xxiii. Siddhalepa Ayurvedic Hospital, No.106A, Templers Road, Mount Lavinia.
- xxiv. Swarna Herbal Products, Udumputigama, Dompe.
- xxv. State Pharmaceutical Corporation, No.11,Sir John Kotalawala Mawatha, Kandawalawatte, Ratmalana.
- xxvi. Uniliver Sri Lanka Limited, No.258, Vincent Perera Mawatha, Colombo -14.
- xxvii. Link Natural Products (Pvt) Ltd.,No.199, Kew Road, Colombo 02.
- xxviii. Eastern Pharmaceuticals, Kirinda, Puhulwella.
- xxix. Eastern Pharmaceuticals(Ayurvedic), Kirinda, Puhulwella.
- xxx. Deepani Enterprises, No.53, I.D.B., Pallekelle.
- xxxi. Swadeshi Industrial Works PLC.,No.57, Colombo Road, Kandana.
- xxxii. Hemsons International (Pvt) Ltd, Hemas Building, No.36, Bristle Street, Colombo 01.
- xxxiii. Majestic Food & Chemists Exports (Pvt) Ltd No.337, Damukanda, Dompe.

- xxxiv. Sithumina Industries, No.65/25, Nawala, Rajagiriya.
 xxxv. Fonterra Sri Lanka, New Kandy Road, Biyagama
 xxxvi. Welcome Chemicals(Pvt)Ltd, Sedawatta Road, Wallampitiya

8.8 Liquor Production and Tax Income in 2017

Table 8.2 : Molasses Arrack

Liquor Manufacturer	From January 1 st to November 09 th		From November 10 th to December 31 st		From January 1 st to December 31 st
	Quantity (Proof Litres)	Tax Income (Rs.Cts)	Quantity (Absolute Litres)	Tax Income (Rs.Cts)	Grand Total of Tax Income (Rs.Cts)
Hingurana Distilleries Ltd	76,343.970	141,236,344.50	6,950.782	22,937,580.60	164,173,925.10
International Distilleries Ltd	782,830.576	1,448,236,565.60	68,286.938	225,346,895.40	1,673,583,461.00
Perecyl Ltd.	46,548.028	86,113,851.80	3,608.158	11,906,921.40	98,020,773.20
Manori Lanka Ltd.	24,267.264	44,894,438.40	1,636.836	5,401,558.80	50,295,997.20
Randenigala Distilleries Ltd	5,654.099	10,460,083.15	741.569	2,447,177.70	12,907,260.85
Uva Glen (Pvt) Ltd.	31,190.917	57,703,196.45	2,398.598	7,915,373.40	65,618,569.85
Classic Distilleries (Pvt) Ltd	25,722.572	47,586,758.20	2,200.029	7,260,095.70	54,846,853.90
W.M Mendis & Co. Ltd.	1,149,192.072	2,126,005,333.20	183,913.029	606,912,995.70	2,732,918,328.90
Rockland Distilleries (Pvt) Ltd.	492,815.353	911,708,403.05	87,250.982	287,928,240.60	1,199,636,643.65
Nippon Expo Ltd.	6,403.854	11,847,129.90	772.910	2,550,603.00	14,397,732.90
International Distilleries Ltd	188,518.482	348,759,191.70	4,216.146	13,913,281.80	362,672,473.50
V A Distilleries (Pvt) Ltd.	26,303.224	48,660,964.40	2,619.813	8,645,382.90	57,306,347.30
Total	2,855,790.411	5,283,212,260.35	364,595.790	1,203,166,107.00	6,486,378,367.35

Table 8.3 : Coconut & Processed Arrack

Liquor Manufacturer	From January 1 st to November 09 th		From November 10 th to December 31 st		From January 1 st to December 31 st
	Quantity (Proof Litres)	Tax Income (Rs.Cts)	Quantity (Absolute Litres)	Tax Income (Rs.Cts)	Grand Total of Tax Income (Rs.Cts)
Acme Lanka Ltd.	44,695.830	82,687,285.50	5,348.192	17,649,033.60	100,336,319.10
Distilleries Company of Sri Lanka Ltd.	1,716,122.545	3,174,826,708.25	160,355.216	529,172,212.80	3,703,998,921.05
International Distilleries Ltd.	419,226.348	775,568,743.80	41,464.607	136,833,203.10	912,401,946.90
Randenigala Distilleries Ltd.	3,283.101	6,073,736.85	288.135	950,845.50	7,024,582.35
Nippon Expo Ltd.	4,799.734	8,879,507.90	152.156	502,114.80	9,381,622.70
Rockland Distilleries Ltd.	765,868.624	1,416,856,954.40	111,126.610	366,717,813.00	1,783,574,767.40
Scotland Distilleries Ltd.	330.426	611,288.10	-	-	611,288.10
Uva Glen (Pvt) Ltd.	2,805.331	5,189,862.35	282.069	930,827.70	6,120,690.05
W.M Mendis & Co. Ltd.	1,460,373.335	2,701,690,669.75	186,109.405	614,161,036.50	3,315,851,706.25
Classic Distilleries (Pvt) Ltd	7,925.310	14,661,823.50	1,085.814	3,583,186.20	18,245,009.70
Total	4,425,430.584	8,187,046,580.40	506,212.204	1,670,500,273.20	9,857,546,853.60

Table 8.4 : Special Arrack

Liquor Manufacturer	From January 1 st to November 09 th		From November 10 th to December 31 st		From January 1 st to December 31 st
	Quantity (Proof Litres)	Tax Income (Rs.Cts)	Quantity (Absolute Litres)	Tax Income (Rs.Cts)	Grand Total of Tax Income (Rs.Cts)
V A Distilleries (Pvt.) Ltd.	442,049.570	817,791,704.50	40,449.075	133,481,947.50	951,273,652.00
Acme Lanka Company Ltd.	1,214,710.469	2,247,214,367.65	132,763.247	438,118,715.10	2,685,333,082.75
Synergy (Pvt) Ltd.	55,118.765	101,969,715.25	7,284.063	24,037,407.90	126,007,123.15
Distilleries Company of Sri Lanka Ltd	26,901,688.232	49,768,123,229.20	2,259,508.869	7,456,379,267.70	57,224,502,496.90
Percyl Co. Ltd.	1,057,691.226	1,956,728,768.10	84,224.389	277,940,483.70	2,234,669,251.80
Hingurana Distilleries Ltd	595,262.618	1,101,235,843.30	67,931.799	224,174,936.70	1,325,410,780.00
International Distilleries Ltd	1,885,471.368	3,488,122,030.80	141,662.545	467,486,398.50	3,955,608,429.30
Manori Lanka (Pvt) Ltd.	25,424.829	47,035,933.65	1,422.477	4,694,174.10	51,730,107.75
Nippon Expo Ltd.	171,413.718	317,115,378.3	20,110.365	66,364,204.50	383,479,582.80
Rockland Distilleries Ltd.	134,654.724	249,111,239.40	17,033.805	56,211,556.50	305,322,795.90
Scotland Distilleries Ltd.	267,655.979	495,163,561.15	20,760.550	68,509,815.00	563,673,376.15
Randenigala Distilleries Co.Ltd.	110,715.661	204,823,972.85	8,955.464	29,553,031.20	234,377,004.05
Uva Glen Pvt Ltd.	152,585.313	282,282,829.05	16,038.623	52,927,455.90	335,210,284.95
W.M. Mendis & Co. Ltd.	94,160.691	174,197,278.35	14,787.747	48,799,565.10	222,996,843.45
Classic Manufacturers	25,818.430	47,764,095.50	1,830.416	6,040,372.80	53,804,468.30
Total	33,134,421.593	61,298,679,947.05	2,834,763.434	9,354,719,332.20	70,653,399,279.25

Table 8.5 : Palmyra Arrack

Liquor Manufacturer	From January 1 st to November 09 th		From November 10 th to December 31 st		From January 1 st to December 31 st
	Quantity (Proof Litres)	Tax Income (Rs.Cts)	Quantity (Absolute Litres)	Tax Income (Rs.Cts)	Grand Total of Tax Income (Rs.Cts)
Varani Distillery	12,549.142	23,215,912.70	1,191.307	3,931,313.100	27,147,225.80
Valikamam Distillery	23,541.397	43,551,584.45	3,139.516	10,360,402.800	53,911,987.25
Scotland Distilleries Company	788.400	1,458,540.00			1,458,540.00
Total	6,299,334.745	68,226,037.15	4,330.823	14,291,715.90	82,517,753.05

Table 8.6 : Country Made Foreign Liquor

Liquor Manufacturer	From January 1 st to November 09 th		From November 10 th to December 31 st		From January 1 st to December 31 st
	Quantity (Proof Litres)	Tax Income (Rs.Cts)	Quantity (Absolute Litres)	Tax Income (Rs.Cts)	Grand Total of Tax Income (Rs.Cts)
Hingurana Distilleries Ltd	23,092.291	46,877,350.73	1,366.868	4,510,664.400	51,388,015.13
International Distilleries Ltd.	943,644.468	1,915,598,270.04	96,893.537	319,748,672.100	2,235,346,942.14
Nippon Expo Ltd.	166.941	338,890.23			338,890.23
Pericyl Company (Pvt) Ltd.	659,660.752	1,339,111,326.56	70,342.391	232,129,890.300	1,571,241,216.86
Rockland Distilleries (Pvt) Ltd.	610,720.732	1,239,763,085.96	99,011.048	326,736,458.400	1,566,499,544.36
W.M Mendis & Co., Ltd.,	241,887.484	491,031,592.52	16,664.414	54,992,566.200	546,024,158.72
V A Distilleries (Pvt.) Ltd.	19,951.200	40,500,936.00	2,704.068	8,923,424.400	49,424,360.40
Total	2,499,123.868	5,073,221,452.04	286,982.326	947,041,675.80	6,020,263,127.84

Table 8.7 : Malt Liquor (Beer) Production: Alcohol Percentage below 5%

Liquor Manufacturer	From January 1 st to November 09 th		From November 10 th to December 31 st		From January 1 st to December 31 st
	Quantity (Bulk Litres)	Tax Income (Rs.Cts)	Quantity (Absolute Litres)	Tax Income (Rs.Cts)	Grand Total of Tax Income (Rs.Cts)
Asia Pacific Brewery (Lanka) Ltd.(Heineken)	860,105.520	163,420,048.80	13,123.595	31,496,628.00	194,916,676.80
Lion Brewery Ltd.	9,169,723.720	1,742,247,506.80	207,917.394	499,001,745.60	2,241,249,252.40
Total	10,029,829.240	1,905,667,555.60	221,040.989	530,498,373.60	2,436,165,929.20

Table 8.8 : Malt Liquor (Beer) Production: Alcohol Percentage above 5%

Liquor Manufacturer	From January 1 st to November 09 th		From November 10 th to December 31 st		From January 1 st to December 31 st
	Quantity (Bulk Litres)	Tax Income (Rs.Cts)	Quantity (Absolute Litres)	Tax Income (Rs.Cts)	Grand Total of Tax Income (Rs.Cts)
Asia Pacific Brewery (Lanka) Ltd.(Heineken)	8,017,542.780	2,525,525,975.70	285,714.858	685,715,659.20	3,211,241,634.90
Pericyl Company (Pvt) Ltd.	28,498,025.155	8,976,877,923.86	1,464,223.284	3,514,135,881.60	12,491,013,805.46
Total	36,515,567.935	11,502,403,899.56	1,749,938.142	4,199,851,540.80	15,702,255,440.36

Table 8.9 : Wine Production

Manufacturer	From January 1 st to November 09 th		From November 10 th to December 31 st		From January 1 st to December 31 st
	Quantity (Bulk Litres)	Tax Income (Rs.Cts)	Quantity (Absolute Litres)	Tax Income (Rs.Cts)	Grand Total of Tax Income (Rs.Cts)
Lanka Wine Company-Local	3,361.375	336,137.50	308.744	740,984.40	1,077,121.90
Lanka Wine Company-Foreign	3,361.375	3,764,740.00	308.744	740,984.40	4,505,724.40
Mayfield(Pvt) Ltd	326.866	32,686.64			32,686.64
Total	7,049.616	4,133,564.14	617.487	1,481,968.80	5,615,532.94

Table 8.10 : Sake Production

Manufacturer	From January 1 st to December 31 st		
	Quantity		Tax Income
	Bulk Litres	Proof Litres	(Rs.Cts)
Royal Casks (Pvt.) Ltd	676,562.500	183,297.669	21,962,382.70

- **Bottled Toddy Production**

Table 8.11 : List of Bottled Toddy Manufacturers, Production and Tax Income

Manufacturer	Quantity (Bulk Litres)	Tax Income (Rs.Cts)
Wayamba Super Bottled Toddy Manufactory-Madampe	908,130.000	45,406,500.00
Eagle Bottled Toddy - Madampe	652,725.000	32,636,250.00
Singha Bottled Toddy - Madampe	843,585.000	42,179,250.00
Manori Lanka BottledToddy- Madampe	1,066,790.000	53,339,500.00
Nemta Bottled Toddy - Madampe	547,610.000	27,380,500.00
Golden Eagle - Madampe	-	-
New Manori Lanka- Madampe	182,980.000	9,149,000.00
T.S.R Bottled Toddy -Marawila	825,755.000	41,287,750.00
T.S.R (New) Bottled Toddy Manufactory	-	-
Horse Power Bottled Toddy -Marawila	286,980.000	14,349,000.00
Shooting Star Bottled Toddy -Marawila	620,700.000	31,035,000.00
Commander Bottled Toddy -Marawila	177,810.000	8,890,500.00
Camel Bottled Toddy -Colombo	28,875.000	1,443,750.00
Three Lion Bottled Toddy -Badulla	288,253.995	14,412,699.75
A.M.P Bottled Toddy-Kochchikade	174,327.500	8,716,375.00
New Commander Bottled Toddy -Chilaw	109,545.000	5,477,250.00
Jaffna Palm Development Cooperative	36,668.125	1,833,406.25
Welanei Palm Development Cooperative	-	-
AriyalaiPalm Development Cooperative	-	-
Kopai Palm Development Cooperative	49,721.875	2,486,093.75
Chankanei Palm Development Co-operative	90,076.250	4,503,812.50
Manipai Bottled Toddy Manufactory	30,461.875	1,523,093.75
Pandatiarippu Palm Development Cooperative	52,563.750	2,628,187.50

Kayts Palm Development Cooperative	19,541.250	977,062.50
Kareinagar Palm Development Cooperative	47,176.875	2,358,843.75
Valikamam Bottled Toddy Manufactory	82,988.125	4,149,406.25
Chavakachcheri Palm Development Cooperative	95,485.625	4,774,281.25
Kodikamam Palm Development Cooperative	72,471.250	3,623,562.50
Chunnakam Palm Development Cooperative	98,911.500	4,945,575.00
Kondavil Bottled Toddy Manufactory	39,453.750	1,972,687.50
Thellipalai Bottled Toddy Manufactory	68,366.125	3,418,306.25
Atchuvvely Bottled Toddy Manufactory	22,990.000	1,149,500.00
Point Pedro Palm Development Cooperative	-	-
Karaveddi Bottled Toddy Manufactory	-	-
Kilinochchi Bottled Toddy Manufactory	349,700.625	17,485,031.25
Thunukkai Bottled Toddy Manufactory	50,539.375	2,526,968.75
Pudukudiriruppu Bottled Toddy Manufactory	68,819.375	3,440,968.75
Mullai West Bottled Toddy Manufactory	83,016.250	4,150,812.50
Mullai East Bottled Toddy Manufactory	64,627.250	3,231,362.50
Poonagari Bottled Toddy Manufactory	96,086.875	4,804,343.75
Total	8,233,732.620	411,686,631.00

8.9 Production / Issuing of Spirits in 2017

- Production of Spirits distilled from Coconut Toddy

Table 8. 12 :Quantity of Spirits distilled from Coconut Toddy

Distillery	Quantity of Pure Toddy Received for Distillation	Quantity of Absolute Spirits Manufactured (Litres)
Acme Lanka Distillery	3,793,430.400	265,387.800
Mendis Distillery- Moragalla	5,069,422.500	377,026.800
Beruwala Distillery	4,557,584.000	344,970.200
Cooperative Distillery	264,056.000	16,357.500
Mestiya Distillery	2,425,273.000	176,596.800
Rockland Distillery	3,072,202.000	241,265.600
Seeduwa Distillery	20,181,134.700	1,509,921.800
Total	39,363,102.600	2,931,526.500

- **Production of Spirits distilled from Palmyra Toddy**

8. 13 :Quantity of Spirits distilled from Palmyrah Toddy

Distillery	Quantity of Pure Toddy Received for Distillation	Quantity of Absolute Spirits Manufactured (Litres)
Thikkam Distillery	-	-
Varani Distillery	452,743.000	15,743.546
Valikamam Distillery	506,746.000	19,505.800
Total	959,489.000	35,249.346

- **Production of Rectified Spirits**

8. 14 :Production of Rectified Spirits

Distillery	Quantity(Bulk Litres)
Pelwatta Distillery	3,690,520.000
Sewanagala Distillery	3,326,840.400
Hingurana Distillery	671,659.800
Royal Casks Distillery	111,259.200
Galoya Plantation Company	38,568.000
Total	7,838,847.400

Table 8.15 : Quantity of Rectified Spirits issued for Manufacturing Arrack

Distillery	Rectified Spirits (Bulk Litres)
Pelwatta Distillery	3,638,540.000
Sewanagala Distillery	2,795,625.000
Hingurana Distillery	809,915.000
Royal Casks Distillery	115,554.000
Galoya Plantation Company	-
Total	7,359,634.000

Table 8. 16: Quantity of Rectified Spirits issued for Other Non-potable products

Distillery	Quantity (Bulk Litres)
Pelwatta Distillery	277,521.800
Sewanagala Distillery	772,765.000
Total	1,050,286.800

Table 8. 17 : Rectified Spirits (Imported for manufacture of Arrack)

Company	Quantity (Bulk Litres)
Distilleries Company of Sri Lanka Ltd.	15,918,214.100
International Distilleries Ltd.	746,032.400
W.M Mendis & Co., Ltd.	191,457.000
Periceyl Company (Pvt) Ltd.	1,003,445.200
Rockland Distilleries (Pvt) Ltd.	336,281.700
Acme Lanka(Pvt) Ltd	-
Uva Glen(Pvt) Ltd	-
V .A Distilleries (Pvt.) Ltd	-
Total	18,195,430.400

- **Tax on local and imported Ethyl Alcohol purchased for manufacturing liquor :-**

Table 8.18 : Tax on local and imported Ethyl Alcohol purchased for manufacturing liquor in the year 2017

Liquor Manufacturer	Quantity (Bulk Litres)	Tax Income (Rs.Cts)
Distilleries Company of Sri Lanka Ltd.	20,948,283.700	209,482,837.00
Rockland Distilleries Ltd	1,520,540.500	15,205,405.00
Scotland Distilleries Ltd	165,000.000	1,650,000.00
International Distilleries Ltd	2,314,430.400	23,144,304.00
W.M Mendis & Company Ltd	2,306,911.900	23,069,119.00
Periceyl Company (Pvt) Ltd	1,215,187.200	12,151,872.00
V & A (Pvt.) Ltd	240,000.000	2,400,000.00
Randenigala Distilleries Ltd	60,000.000	600,000.00
Acme Lanka Company Ltd	860,000.000	8,600,000.00
Classic Distilleries (Private) Ltd	45,000.000	450,000.00
Manori Lanka Company (Pvt) Ltd	28,000.000	280,000.00
Nippon Expo Company Ltd	114,000.000	1,140,000.00
Synergy Hotel & Holdings (Pvt.) Ltd	46,000.000	460,000.00
Royal Casks (Pvt.) Ltd	127,000.000	1,270,000.00
Uva Glen Company (Pvt) Ltd	90,000.000	900,000.00
Warani (Thenmaarachchi Palmyrah Coconut Development Society)	10,000.000	100,000.00

Walikamam Manufactory	15,000.000	150,000.00
Hingurana Distilleries Company	489,000.000	4,890,000.00
Total	30,594,353.700	305,943,537.00

- **Quantity of Denatured Spirits:-**

There has been no production of denatured spirits during the year 2017.

8.10 Income Analysis

Table 8.19: Tax Income on Liquor Production 2013-2017

Year	Liquor Production Revenue (Rs. Million)	Difference in Tax Increase (Rs. Million)	Percentage of Tax Increase compared to the previous year
2013	63,026	2,948	4.9%
2014	70,513	7,487	11.9%
2015	105,957	35,444	50.3%
2016	120,794	14,835	14.0%
2017	113,027	(7,767)	(6.87%)

Table 8.20: Liquor Production 2013-2017

Year	Hard Liquor	Malt Liquor
	Proof Litres (Million)	Bulk Litres(Million)
2013	44.3	120.3
2014	43.9	124.5
2015	51.7	125.6
2016	55.5	52.2
2017	50.0	70.4

Excise income which was Rs.120.7 Billion in the year 2016, decreased to Rs. 113 Billion in the year 2017. It has been observed that said decline in revenue has occurred due to the hike in liquor prices caused by the implementation of the Value Added Tax since January 2017 which was imposed by the budget 2016 and the draught and floods which adversely affected many Districts in the Island.

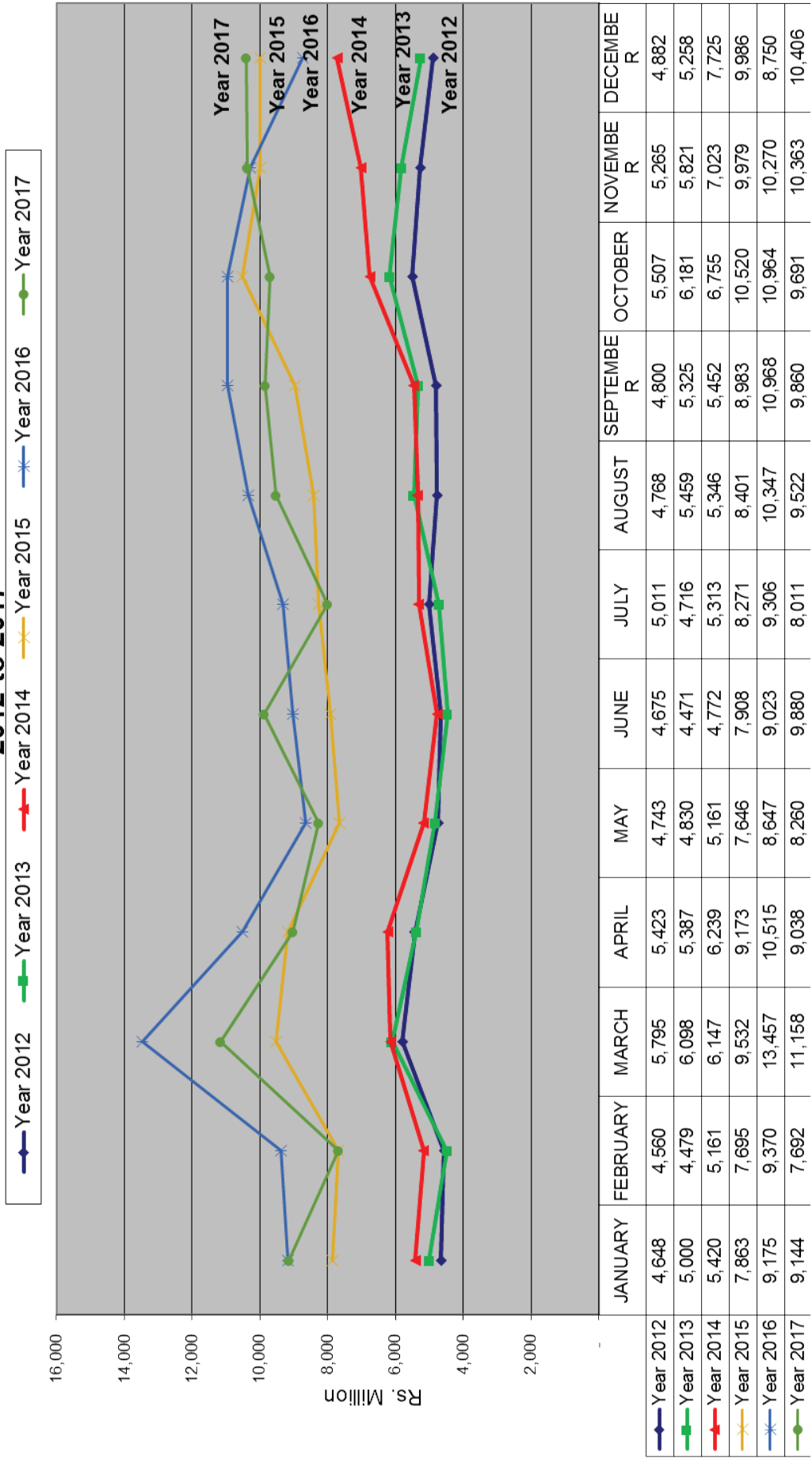
- Increase in Excise Duties on Liquor from 2005 to 2017

Table 8. 21. Increase in Excise Duties on Liquor

Year & Date of Tax Increase	Arrack	Foreign Liquor (Rs. per Proof Litre)	Local Wine below 18%	Imported Wine	Malt Liquor below 5%	Malt Liquor above 5% (Rs. per Bulk Litre)	Bottled Toddy	Tobacco (Per kg 1)	Imported Foreign Liquor (Rs. per Bulk Litre)			Ethyl Alcohol (Rs. per Bulk Litre)	Excise Notification on No.
									Beer	Wine	Other Foreign Liquor		
2005.11.09	381.00	510.00	-	225.00	32.50	48.50	-	-	-	-	-	-	879-882
2005.12.09	396.00	525.00	-	250.00	37.50	53.50	-	-	-	-	-	-	883-886
2006.10.06	421.00	550.00	-	275.00	-	-	-	-	-	-	-	-	889-891
2007.03.13	446.00	575.00	-	300.00	-	-	10.00	-	-	-	-	-	893-896
2007.10.25	510.00	640.00	-	365.00	38.00	54.00	-	-	-	-	-	-	897-900
2008.10.08	560.00	690.00	-	415.00	48.00	64.00	-	-	-	-	-	-	903-906
2009.03.27	610.00	740.00	-	465.00	-	-	-	-	-	-	-	-	907-909
2010.06.24	660.00	790.00	-	515.00	58.00	74.00	-	-	-	-	-	-	916-919
2010.10.29	710.00	840.00	-	565.00	63.00	79.00	-	-	-	-	-	-	921-924
2010.11.23	813.00	953.00	-	668.00	80.00	96.00	-	-	-	-	-	-	927-930
2011.01.07	863.00	1003.00	-	718.00	80.00	96.00	-	-	-	-	-	-	931-934
2011.10.25	923.00	1063.00	-	778.00	85.00	101.00	-	-	-	-	-	-	939-942
2011.11.22	-	-	100.00	-	-	-	-	-	-	-	-	-	946
2012.03.30	983.00	1,123.00	-	838.00	90.00	106.00	-	-	-	-	-	-	947-950
2012.10.06	1043.00	1,183.00	-	898.00	100.00	116.00	-	-	-	-	-	-	952-955
2013.07.31	1,110.00	1,250.00	-	-	110.00	130.00	-	-	-	-	-	-	959-961
2014.10.10	1,200.00	1,370.00	-	-	120.00	145.00	-	-	-	-	-	-	964-966
2014.10.25	1,485.00	1,700.00	-	1,120.00	150.00	185.00	-	-	-	-	-	-	968-971
2015.10.03	1,595.00	1,860.00	-	-	190.00	245.00	-	-	-	-	-	-	975-977
2015.11.21	1,850.00	2,030.00	-	-	160.00	315.00	-	-	-	-	-	-	978-980
2015.12.05	-	-	-	-	190.00	315.00	-	-	-	-	-	-	981
2016.01.01	-	-	-	-	-	-	30.00	-	-	-	-	-	987
2016.04.01	-	-	-	-	-	-	-	-	-	-	10.00	-	988
2016.09.01	-	-	-	-	-	-	-	-	50.00	100.00	-	-	989/990
2017.01.01	-	-	-	-	-	-	50.00	-	-	200.00	-	-	993
2017.11.10	3300.00	3300.00	-	2400.00	2400.00	2400.00							1000

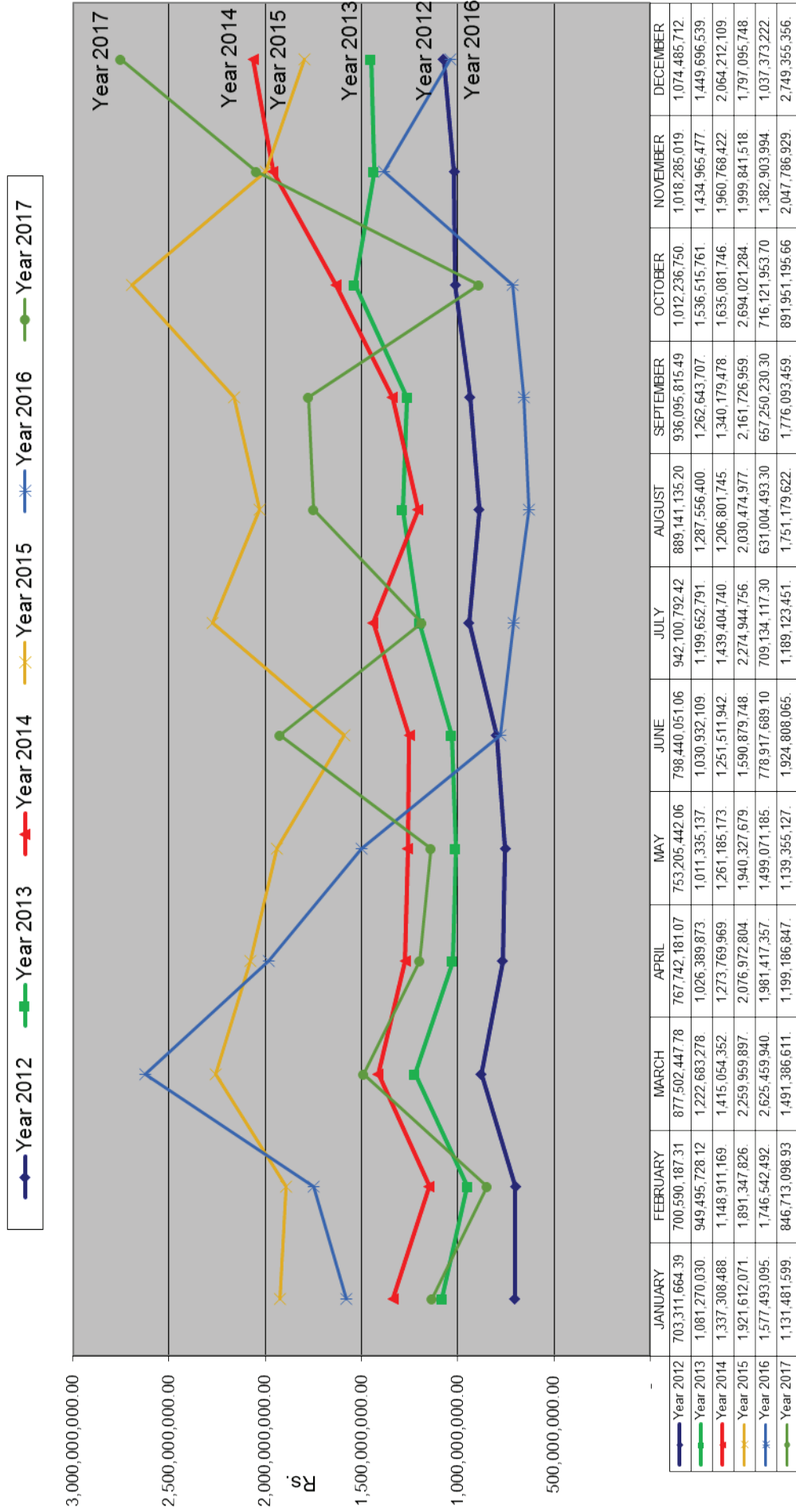
68 Graph 8.1: Increase of Excise Income from 2012 to 2017

Excise Revenue (Local & Foreign Liquor, Beer, Tobacco, Industrial & Other Taxes - 2012 to 2017)



Graph 8.2: Excise duty on Malted Liquor (Beer) from 2012 to 2017

Excise Duty on Malt Liquor (Beer)- From 2012 to 2017



Chapter 9 | Law Enforcement

- 9.1 Introduction
- 9.2 Prevention of Illicit Liquor & Drugs and Social Security
- 9.3 Tobacco Tax Division
- 9.4 Legal Division
- 9.5 Bureaus of Excise Special Operations

9.1 Introduction

This unit consisted of a staff of 02 Excise Inspectors, 01 Guard, 03 officers from the Combined Services and 02 drivers under the supervision of the Deputy Commissioner of Excise (Law Enforcement), Commissioner of Excise (Law Enforcement), Addl. Commissioner General of Excise (Revenue Operations and Law Enforcement) and the Commissioner General of Excise.

Following activities were monitored by this Division.

- i. Setting detection targets and supervision of Excise Officers
- ii. Conducting progress review meetings at regional level
- iii. Recommendation of special commendations
- iv. Prescribing composition fees for technical crime reports
- v. Collecting and analyzing of information on detections
- vi. Taking necessary actions for public petitions
- vii. Coordinating with parallel institutions and attending relevant meetings

Department was able to achieve 48,482 detection targets rendering a higher contribution for implementing government policy in the year 2017. It is a 67% increase compared to the number of detections in the year 2016. A large number of massive detections of illegal liquor, drugs and tax unpaid imported liquor were carried out through motivation of Excise Officers attached to the regional stations, Special Operations Bureaus as well as the Narcotic Unit.

Rs. 191,100,661.00 could be collected as fines having taken legal actions against 48,482 detections carried out in the year 2017. This Division has extended its contributions to control unlawful alcohol and drugs by implementing the Excise Ordinance, Tobacco Tax, and the National Authority on Tobacco & Alcohol Act.

Enforcement of the Tobacco Tax including the issuing and renewal of licenses for tobacco and tobacco based products is yet another task carried out by this Division.

Law Enforcement Division has rendered a greater contribution to the overall excise tax increase by way of its optimal performance.

9.2 Prevention of Illicit Liquor & Drugs and Social Security

Prevention Village Program

Prevention village programme which was commenced in the year 2010 was successfully implemented in the year 2017 as well. Main attention of the program was drawn to revive the villages already absorbed to the liquor prevention program and to absorb new villages to the program.

Accordingly, 51 new villages were absorbed to the program in the year 2017 and an active contribution was extended by the relevant Assistant Commissioner's Divisions for all prevention programs which were carried out at national level parallel to the above program by the Presidential Task Force.

In addition to the above mentioned national programs implemented under the theme of "Alcohol free country", numerous awareness programs and community based programs were implemented at regional level at the request of various institutes and organizations, with the view of promoting the concept of prevention alcohol prevention

9.3 Tobacco Tax Division

Issuing licenses for storing, importation and exportation of Cigarettes, Cigars, Beedi and Pipe Tobacco products and collecting of relevant taxes were done during the year 2017 also as per the powers stipulated in the Tobacco Tax Act No.08 of 1999 and its incidental Extraordinary Gazette Notification No.1625/1 dated 26.10.2009 (new licenses for storing, importation and exportation of Cigarettes, Cigars, Beedi and Pipe Tobacco products were not issued :only renewal was done) 521 licenses for manufacturing and storing Beedi, Cigars, Pipe Tobacco have been renewed in the year 2017.

The new gazette notification with amendments to the orders (General) of the Tobacco Tax Act No.01 of 2009 which has been forwarded to the Parliament through the Legal Draftsmen's Department and the Ministry of Finance and Mass Media have paved the way to make numerous positive approaches to minimize the use of tobacco products as per the government policy and to prevent illegal activities related tobacco while ensuring the expected tax revenue from the tobacco tax.

9.4 Legal Division

Legal Division was operated under the direct supervision of the Commissioner General of Excise. 01 Excise Inspector, 01 Excise Guard, and a Driver was attached to this Division under the supervision of the Deputy Commissioner of Excise (Legal).

Scope of this Division includes supplying and forwarding required information pertain to cases filed by licensees and Excise Officers to the Attorney General's Department, appearing before the Courts for such cases representing the Commissioner General of Excise and rendering legal assistance for notifications, circulars, rules and regulations issued by the order of Commissioner General of Excise.

Moreover, it works in collaboration with the Attorney General's Department, Legal Draftsmen's Department and other relevant institutes and departments and take necessary actions related to legal issues of divisional excise stations.

Table 9.1 –Classification of Cases

Classification of Cases	No.of Cases in 2017
Supreme Court Cases	09
Appeal Court Cases	10

9.5 Bureaus of Excise Special Operations

Narcotic Unit, Colombo has been established for controlling narcotic drugs covering the whole island and the Special Operation Bureau, Colombo has also been established for detection of islandwide illegal liquor and drugs as well as the discrepancies of licensees and taking actions against them. In addition to the above, four other special operations bureaus have been established in Central, North Western, Southern and North Central Provinces. All these units operate under the supervision of the Commissioner General of Excise, Commissioner of Excise (Law Enforcement) and the Deputy Commissioner of Excise (Law Enforcement).

- **Excise Narcotic Law Enforcement Unit**

The Narcotics Unit which was established in November 1985 for the purpose of enforcing the Law under the Poisons, Opium and Dangerous Drugs Ordinance, has been operating in No. 15, Park Avenue, Colombo 08 since 10.03. 2016.

A staff of 17 officers consisting of five Excise Inspectors including the Excise Officer in Charge and 13 officers from other ranks have served attached to this unit in the year 2017 under the direct supervision of a Superintendent of Excise (Narcotic).

902 detections have been carried out by the Narcotics Unit during the year 2017 out of which 883 detections were on narcotic drugs while 644 detections were on Heroine and 224 detections on Ganja or Cannabis. In addition to the above .02 detections on *Modaka*, .05 detections Cocaine and 10 detections on L.S.D have been carried out. Moreover, 16 detections under the Excise Ordinance and 02 detections under Tobacco Tax Act have been conducted. A fine of Rs. 5.2 Million has been charged for the cases filed in the High Courts and the Magistrate Courts with respect to the above raids.

- **Special Operation Bureau (Colombo)**

Special Operation Bureau -Colombo consists of a staff of one Chief Excise Inspector, 06 Excise Inspectors and 16 officers from other ranks under the direct supervision of a Superintendent of Excise (Special Operations) .

This Bureau which functions as a Unit of curbing all excise crimes in the island based on complaints received to the Commissioner General of Excise from the general public, has carried out 2021 detections and the Rs.11.7 million of fines have been collected. 125 Technical Crime Reports have been submitted by this Bureau related to violation of conditions by licensed premises within the year and composition fee of Rs.6.9 million has been accumulated to the government to date.

- **Special Operations Bureau - (Central Province)**

Two Chief Inspectors of Excise, 06 Excise Inspectors and 11 officers from other ranks have been attached to the Special Operations Bureau - (Central Province) which conducts operations in Central, Uva and Sabaragamuwa Provinces having located its office in Kandy .

A total sum of Rs.4.9 million has been earned to the Government by this unit as fines having conducted 1,429 successful raids including 118 raids on narcotic drugs and illicit liquor distillation .

This bureau has been able to add Rs. 115,000 to the excise income through submission of 08 Technical Crime Reports with respect to the violations of conditions by licensed premises .

- **Special Operations Bureau - (Southern Province)**

Southern Provincial Special Operations Bureau which is established in Galle for carrying out operations in the southern Province was consisted of a staff of 01 Chief Inspector of Excise, 04 Excise Inspectors and 08 officers of other ranks .

This unit has been able to carry out 1,154 successful detections during the year under review and add Rs.4.4 million worth fines to the Government having filed cases against them .

In addition to the above,it has been able to bring in a composition fee of Rs.1.1 million through 13 Technical Crime Reports pertaining to violations of conditions by licensed premises .

- **Special Operations Bureau - (North Central Province)**

North Central Provincial Special Operations Bureau which is located in Anuradhapura city for conducting its operations in Northern & North Central Provinces consisted of a staff of 01 Chief Inspector of Excise, 04 Excise Inspectors and 07 officers from other ranks.

This unit has been able to carry out 1,032 detections during the year under review and charged Rs. 2.3 million as fines through cases filed based on said detections.

It has been able to earn Rs. 649,300.00 as compensation fees having submitted 22 Technical Crime Reports with respect to the violations of conditions by licensed premises.

- **Special Operations Bureau - (North Western Province)**

North Western Provincial Special Operations Bureau which is located in Kurunegala city consists of a staff of 01 Chief Inspector of Excise, 03 Excise Inspectors and 07 officers from other ranks. This unit has been able to carry out 1679 successful raids during the year under review. It has earned Rs.9.4 million worth fines having filed cases based on these detections. Further, Rs 4.7 million has been accumulated to the government as composition fees having submitted 29 Technical Crime Reports against licensed premises which have breached excise conditions.

- **Assaults and Obstructing the Official Duties**

No any incidents of obstructing duties or assaults have been reported during the year under review.

- **Excise Divisions and the relevant Districts**

Excise Division	District
Western Province 1	Colombo
Western Province 11	Kalutara
Western Province 111	Gampaha
North Western Province 1	Kurunegala
North Western Province 11	Puttalam
Nothern Province 1	Jaffna
Nothern Province 11	Mullaitivu, Kilinochchi, Mannar, Vauvniya

Chapter 10 | Importation and Exportation Liquor, Spirits, Tobacco and Cigarettes

- 10.1 Quantity of Imported Foreign Liquor And the Tax Income
- 10.2 List of Licensed Foreign Liquor Importers
- 10.3 Rectified Spirits Imported for Manufacturing Liquor
- 10.4 Tobacco Taxes
- 10.5 Tax Exemption on Liquor Exportation
- 10.6 Excise Duty levied on Raw Materials used for Manufacturing Ethanol
- 10.7 Excise Duty on Importation of Non-Potable Spirits

10.1 Quantity of Imported Foreign Liquor and the Tax Income

A new excise duty has been imposed on imported bottled foreign liquor under the Excise Notification No.996 and the liquor imported for duty free shops and for re exportation is exempted from the said excise duties.

A duty of Rs.50.00 per litre of Beer, Rs.100.00 per litre of Wine and Rs.200.00 per litre of other foreign liquor is levied.

Table 10.1 : Imported bottled foreign liquor and Tax (since 01.09.2016)

Type of Liquor	Quantity (Bulk litres)	Tax Income (Rs.)
Beer	311,542.825	11,975,389.25
Wine	1,329,675.580	125,151,983.00
Other Foreign Liquor	1,452,471.795	163,789,863.00
Total	3,093,690.200	300,917,235.25
Surplus of 3% imposed as per Condition 6 of EN 996		9,391,515.97
Grand Total of Taxes		310,308,751.22

10.2 List of Licensed Foreign Liquor Importers

- I. Decanter Wine Holdings (Pvt) Ltd.- Hidellana, Rathnapura
- II. Distilleries Company of Sri Lanka PLC – Peliyagoda
- III. Favourite International Ltd.-Moratuwa
- IV. Free Lanka Trading Company Ltd- Peliyagoda
- V. Global Brands (Pvt) Ltd.- Colombo 13
- VI. Great Western International Ltd.- Boralasgamuwa
- VII. H.Jayarathne Herath(Kurunegala Distributors)-Kurunegala
- VIII. Heineken Lanka Company –Moratuwa
- IX. Hilton Hotel –Colombo 01
- X. Imperial Beverages (Pvt) Ltd.-Katana.
- XI. International Distilleries Ltd.-Kotalawala, Kaduwela
- XII. Jet Enterprises (Pvt) Ltd.- Ragama
- XIII. Lanka Premium Beverages Ltd-Colombo 15
- XIV. Luxury Brands (Pvt) Ltd - Biyagama
- XV. Mega Trading (Pvt) Ltd - Mirihana
- XVI. Pernod Ricard Lanka (Pvt) Ltd.- Colombo 14
- XVII. Prestige Wines and Spirits (Pvt) Ltd – Ampara
- XVIII. Rockland Distilleries (Pvt) Ltd–Colombo 05.
- XIX. United Spirits & Wines International (Pvt) Ltd.- Kosgoda
- XX. Victory Stores (Pvt) Ltd.- Colombo 15
- XXI. Vindana Enterprises (Pvt) Ltd
- XXII. W.M.Mendis & Company- Welisara

10.3 Rectified Spirits Imported for Manufacturing Liquor

Table 10.2 :Rectified Spirits (Imported for Manufacturing Liquor)

Company	Imported Quantity (Bulk Litres)
Distilleries Company of Sri Lanka PLC	15,918,214.100
I.D Lanka (Pvt) Ltd	746,032.400
W.M Mendis (Pvt) Ltd	191,457.000
Pericyl (Pvt) Ltd	1,003,445.200
Rockland Distilleries (Pvt) Ltd	336,281.700
Total	18,195,430.400

10.4 Tobacco Tax

- **Tax on Local Tobacco:-**

A tax of Rs.10 is levied on every kilo of tobacco used for manufacturing cigarette locally.

Table 10.3 : Country made tobacco used for manufacturing of Cigarettes and the tax.

Type of Tobacco	Quantity (Kg.)	Tax of Rs.10 per 1 kg (Rs.)
Country made tobacco	1,930,680,600	19,306,806.00

10.5 Exemption of Taxes on Exportation of Liquor

Excise Duty which is levied on liquor manufactured in Sri Lanka for the purpose of exportation, is reimbursed

Table 10.4 : Excise Duty on Liquor Manufacturing Reimbursed on Exportation

Deduction of Excise Duties for Hard Liquor (Rs.)	24,154,399.73
Deduction of Excise Duties for Beer (Rs.)	577,609,160.40
Total (Rs.)	601,763,560.13

10.6 Excise Duty levied on Raw Materials used for Manufacturing Ethanol

Taxes have been levied on raw materials used in manufacturing Ethanol as per the Excise Notification No.1002 with effect from 10.11.2017. Taxes levied are given below.

- i. Rs.05 per bulk litre of Coconut Toddy
- ii. Rs. 10 per kilogram of Molasses/Rice/Maize/Fruit pulps

Table 10.5 : Excise Duty levied on Raw Materials used for Manufacturing Ethanol

Distillery	Quantity (Litres)	Tax Income (Rs.Cnts)
Beruwala Distillery	384,159.000	1,920,795.00
Mendis Distillery	516,911.400	2,584,557.00
Rockland Distillery	193,067.000	965,335.00
Co-operative Distillery	102,126.000	510,630.00
Seeduwa Distillery	-	-
Acme Distillery	-	-
Mestiya Distillery	-	-
Total	1,196,263.400	5,981,317.00
	Quantity (kg)	Tax Income (Rs.Cnts)
Palwatta Distillery	2,793,000.000	27,930,000.00
Sewanagala Distillery	1,720,000.000	17,200,000.00
Hingurana Distillery	1,252,213.100	12,522,131.00
Galoya Plantation Pvt Ltd	305,240.000	3,052,400.00
Vavulgala Distillery	-	-
Royal Cask Distillery	-	-
Total	6,070,453.100	60,704,531.00
Grand Total of Tax Income		66,685,848.00

10.7 Excise Duty on Importation of Non Potable Spirits

A tax of Rs.15 has been levied per every bulk kilo of Non Potable Spirits imported as per the Excise Notification No.999 with effect from 10.11.2017.

Table 10.6: Excise Duty on Importation of Non Potable Spirits

Tax on Non Potable Spirits	Quantity (kg)	Tax Income (Rs.Cnts)
	1,111,562.000	16,673,430.00

Chapter 11 | Appendices

- Appendix “1” - Number of Toddy taverns operated, Government revenue received from Toddy and the Toddy consumption in each revenue district during the financial 2017.
- Appendix “2” - Number of Licenses issued for manufacturing vinegar and the quantity of vinegar manufactured in the year 2017.
- Appendix “3A” - Consumption of Liquor during the financial year 2017 (in litres)
- Appendix “3B” - Consumption of Liquor during the financial year 2017 (in litres)
- Appendix “4A” - Details of detections made by the Excise Officers under the Tobacco Tax Act during the financial year 2017
- Appendix “4B” - Detections made by the Excise Officers under the National Authority on Tobacco & Alcohol Act during the financial year 2017
- Appendix “5A” - Drug related arrests as per excise area and quantity of drugs
- Appendix “5B” - Drug related arrests as per excise area and quantity of drugs
- Appendix “5C” - Drug related arrests as per excise area and quantity of drugs
- Appendix “5D” - Prison admissions as per gender and type of offence
- Appendix “5E” - Drug related arrests as per age
- Appendix “5F” - Drug related arrests as per excise area and type of drugs
- Appendix “6A” - Analytical statement of (non –compoundable) crimes during the financial year 2017.
- Appendix “6B” - Analytical statement of (non –compoundable) crimes during the financial year 2017.
- Appendix “6C” - Analytical statement of (non –compoundable) crimes during the financial year 2017.
- Appendix “7A” - Revenue received by Foreign Liquor Licenses within the financial year 2017
- Appendix “7B” - Revenue received by Foreign Liquor Licenses within the financial year 2017

Chapter 12 | Conclusion

Conclusion

Conclusion

Excise Department of Sri Lanka is the apex body which is entrusted with the responsibility of excise taxation and excise law enforcement. During the year under review, this Department was able to add over Rs.113 Billion of income to the government revenue by means of the newly introduced excise taxation strategies based on the expanded tax base.

Compared to the year 2016, a decrease of 6.9% could be witnessed in the excise revenue within the year 2017. Decrease in excise income on hard liquor was 11.2% while 11.2% decrease was reported in hard liquor production. An increase of 15.4% was reported in the excise revenue on malt liquor (beer) while 25.9% increase was reported in its volume of production. Increase in tax revenue pertain to bottled toddy was 27.5%.

Excise officers were able to conduct 48,482 successful detections related to excise, narcotic and tobacco crimes within the year 2017 by way of effective and efficient management of its limited Human Resources in order to implement the government policy pertain to social security and the number of detections carried out during the year under review indicates a 67% growth compared to the previous year. Total amount of fines imposed by courts on said crimes were Rs.191.1 million.

I highly appreciate the support extended by His Excellency, the President and the Hon. Prime Minister to accomplish the departmental objectives in line with the government policies and would wish to mention with gratitude that their guidance enormously abetted to steer the department to reach its objectives. Similarly, I extend my sincere gratitude to Hon. Ministers of Finance and Mass Media, Hon. State Ministers of Finance, Hon. Deputy Minister of Finance and Mass Media, Secretary to the Ministry of Finance, all Heads of Departments in the Finance Ministry including that of Fiscal Policy and the officers of relevant Divisions for their valuable support and contribution given during the year under review.

Further, I extend my sincere thanks to all District and Divisional Secretaries for their active contribution to carry out the overall activities of the Excise Department throughout the island and would like to bestow my special thanks to the Attorney General's Department for extending supervisory and legal assistance required to carry out departmental duties.

Moreover, my earnest gratitude extends to the Departments of Inland Revenue, Sri Lanka Customs, Government Analyst's Department, Department of Import and Export Control, Auditor General's Department, and all other government institutes including Sri Lanka Police, Dangerous Drugs Control Board, Sri Lanka Bureau of Standards, Institute of Industrial Technology, National Authority on Tobacco and Alcohol, Police Narcotics Unit, Police Special Task Force and the Police Training School, Nikaweratiya.

In addition, I thankfully mention the assistance given by the Presidential Task Force on Drug Prevention for prevention programs conducted by the Department to realize the concept of "A Nation Free of Alcohol".

Last but not least, I sincerely appreciate the dedication of the entire departmental staff representing all ranks and layers and the support extended by managing the limited human resources and the infrastructure in the year 2017. Further, I expect the contribution and commitment of the entire staff to achieve the departmental objectives and targets in the forthcoming year also.

R. Semasinghe
Commissioner General of Excise

පරිච්ඡේදය '1' / Appendix '1' / විගණකාංගය '1'

2017 මැද ඵල වර්ෂය තුළ එක් එක් ආදායම් දිස්ත්‍රික්කයේ කිලෝ ග්‍රෑම් වලින් ලැබුණු තැන්පත් කළු මත්ස්‍රයේ සහ පරිච්ඡේදය තුළින් ලැබුණු පැන් මත්ස්‍රයේ පරිච්ඡේදය

2017 நிதியாண்டில் ஒவ்வொரு வருமான மாவட்டத்தில் இருந்து கள்ளு தவறணைகளி, கள் முலம் கிடைத்த வருமானம், கள் முகில் பற்றிய கூற்று

Statement of toddy taverns operated, Toddy collected and consumption of toddy in each of the revenue districts during the Financial Year 2017

දිස්ත්‍රික්කය மாவட்டம்	District	දිළි වර්ෂය තුළ කිලෝ ග්‍රෑම් වලින් ලැබුණු තැන්පත් කළු මත්ස්‍රයේ පරිච්ඡේදය තවරුණ මාරුමය ආදායම දැනට පවතින ආදායම		දිස්ත්‍රික්කය තුළින් ලැබුණු පැන් මත්ස්‍රයේ පරිච්ඡේදය දැනට පවතින ආදායම	දිස්ත්‍රික්කය තුළින් ලැබුණු පැන් මත්ස්‍රයේ පරිච්ඡේදය දැනට පවතින ආදායම	දිස්ත්‍රික්කය තුළින් ලැබුණු පැන් මත්ස්‍රයේ පරිච්ඡේදය දැනට පවතින ආදායම		දිස්ත්‍රික්කය තුළින් ලැබුණු පැන් මත්ස්‍රයේ පරිච්ඡේදය දැනට පවතින ආදායම		දිස්ත්‍රික්කය තුළින් ලැබුණු පැන් මත්ස්‍රයේ පරිච්ඡේදය දැනට පවතින ආදායම		දිස්ත්‍රික්කය තුළින් ලැබුණු පැන් මත්ස්‍රයේ පරිච්ඡේදය දැනට පවතින ආදායම	දිස්ත්‍රික්කය තුළින් ලැබුණු පැන් මත්ස්‍රයේ පරිච්ඡේදය දැනට පවතින ආදායම
		දිස්ත්‍රික්කය තුළින් ලැබුණු පැන් මත්ස්‍රයේ පරිච්ඡේදය දැනට පවතින ආදායම	දිස්ත්‍රික්කය තුළින් ලැබුණු පැන් මත්ස්‍රයේ පරිච්ඡේදය දැනට පවතින ආදායම			දිස්ත්‍රික්කය තුළින් ලැබුණු පැන් මත්ස්‍රයේ පරිච්ඡේදය දැනට පවතින ආදායම	දිස්ත්‍රික්කය තුළින් ලැබුණු පැන් මත්ස්‍රයේ පරිච්ඡේදය දැනට පවතින ආදායම	දිස්ත්‍රික්කය තුළින් ලැබුණු පැන් මත්ස්‍රයේ පරිච්ඡේදය දැනට පවතින ආදායම	දිස්ත්‍රික්කය තුළින් ලැබුණු පැන් මත්ස්‍රයේ පරිච්ඡේදය දැනට පවතින ආදායම				
කොළඹ	කොළඹ	5	0	1,200	0	21,594,650	0	21,594,650	0	221,330,000	0	221,330,000	0
මාතලේ	ගම්පහ	26	0	3,835	0	54,130,526.00	0	54,130,526.00	0	913,768,000	0	913,768,000	0
කුරුම	කුරුම	1	2	981	1,640	3,871,000.00	160,000.00	3,871,000.00	200,000.00	96,230,000	200,000.00	96,230,000	257,406.00
මහලුව	කන්දිය	3	1	3,700	0	70,003.873	200,000	70,003.873	200,000	5,605,778.000	200,000	5,605,778.000	94,581.500
මහලුව	මාතලේ	-	0	0	0	0	0	0	0	0	0	0	0
කුරුම	නුවැරැටි	4	0	2,700	0	71,352,120	0	71,352,120	0	843,148,750	0	843,148,750	0
කුරුම	කෘතිය	0	0	0	0	0	0	0	0	0	0	0	0
කුරුම	මාතලේ	-	0	0	0	0	0	0	0	0	0	0	0
කුරුම	හම්බන්තොට	1	0	280	0	3,000,000	0	3,000,000	0	15,265.500	0	15,265.500	0
කුරුම	පාලිය	142	0	19,313	0	284,000.00	0	284,000.00	0	5,529,822.595	0	5,529,822.595	0
කුරුම	මන්නාරම	24	0	2,050	0	0	0	0	0	519,080.875	0	519,080.875	0
කුරුම	වවුනියා	36	0	3,102	0	0	0	0	0	1,004,148.000	0	1,004,148.000	0
කුරුම	කිලිනොච්චිය	46	0	5,520	0	0	0	0	0	2,311,070.875	0	2,311,070.875	0
කුරුම	බාතලො	6	0	1,062	0	28,153,004	0.0000	28,153,004	0	36,067,700	0	36,067,700	0
කුරුම	අම්පාර	-	0	0	0	0	0	0	0	0	0	0	0
කුරුම	ත්‍රිකුණාමලය	3	0	1,000	0	30,840,000	0	30,840,000	0	257,152.0	0	257,152.0	0
කුරුම	කුරුම	5	0	1	0	40,278,790	0	40,278,790	0	370,476.250	0	370,476.250	0
කුරුම	පුත්තලම	24	0	705	0	40,744,996	0	40,744,996	0	594,640,000	0	594,640,000	0
කුරුම	අනුරාධපුර	1	0	70	0	11,998,000	0	11,998,000	0	1,211,198.000	0	1,211,198.000	0
කුරුම	පොලොන්නරුව	0	0	0	0	0	0	0	0	0	0	0	0
කුරුම	පොලොන්නරුව	2	2	3,000	2,283	34,000,000.00	200,000.00	34,000,000.00	200,000.00	651,169.500	200,000.00	651,169.500	469,977.500
කුරුම	මොණරාගල	-	0	750	750	0	0	0	0	0	0	0	0
කුරුම	රත්නපුර	2	2	1,500	50	37,670,000	50,000	37,670,000	100,000	419,938,000	100,000	419,938,000	59,745,390
කුරුම	මුලතිවු	54	0	6,526	0	0	0	0	0	1,280,935.750	0	1,280,935.750	0
කුරුම	කෘතිය	0	0	0	0	0	0	0	0	0	0	0	0
කුරුම	කෘතිය	38.5	7,000	113,000	4,723,000	377,703,089.873	410,200,000	377,703,089.873	500,200,000	1,912,691,875.345	500,200,000	1,912,691,875.345	60,567,355.000



පරිච්ඡේද "3A"
 பிற்றேசர்க்கை "3A"
 Appendix - "3A"

2017 මුදල් වර්ෂය තුළ පරිභෝජනය කරන ලද මත්පැන් ප්‍රමාණය පිළිබඳ සංඛ්‍යා විස්තර (ලීටර් වලින්)
 2017 நிதியாண்டில் மதுபான நுகர்வு பற்றிய கூற்று (லீற்றரில்)
 Statement of Liquor consumption during the financial year 2017 (in Liters)

දිස්ත්‍රික්කය	மாவட்டம்	District	මාලු (බීයර්, ස්ටූට්, පෝටර්) Malt Liqueor (Beer, stout and Porter)	වයින් Wine		වයින්කි Whisky	වැනඩි Brandy	ජින් Gin
				ජෛවික වයින් Sparkling Wine	වෙනත් වයින් Other Wine			
කොළඹ	කොළඹ	Colombo	12,425,315.88	52,352.22	424,682.92	282,041.74	345,452.20	225,149.68
කළුතර	කලුතර	Kaluthara	3,185,190.13	8,196.91	58,966.33	64,369.84	109,113.51	51,307.05
ගම්පහ	ගම්පහ	Gampaha	8,623,300.15	8,726.59	87,272.30	195,177.02	278,156.49	140,259.13
කandy	කandy	Kandy	4,857,934.16	2,096.05	47,138.30	55,092.75	116,176.11	59,959.18
මාතලේ	මාතලේ	Matale	2,344,922.33	1,248.57	22,532.66	22,408.23	44,357.31	20,048.44
නුගලේ	නුගලේ	Nuwara-Eliya	3,243,458.31	1,882.65	26,523.72	21,496.31	49,089.87	24,767.63
කුරුම	කුරුම	Kurunegala	3,647,677.92	1,439.79	6,559.63	76,672.51	157,733.68	58,953.25
පුත්තලම	පුත්තලම	Puttalam	2,850,797.12	530.18	13,937.59	56,302.82	97,978.19	34,069.77
බදුල්ල	බදුල්ල	Badulla	2,724,753.10	690.64	13,138.91	28,116.07	59,644.72	29,518.40
මොණරාගල	මොණරාගල	Monaragala	1,391,974.16	96.25	2,927.51	16,405.77	34,049.19	16,988.47
ගාල්ල	ගාල්ල	Galle	3,708,858.53	10,762.49	179,797.53	53,172.62	82,157.43	56,831.52
මාතලේ	මාතලේ	Mathara	2,355,321.03	1,696.16	36,684.69	36,567.14	63,096.71	34,035.13
හම්බන්තොට	හම්බන්තොට	Hambantota	1,305,587.30	2,139.89	26,277.99	28,595.62	69,565.15	23,787.72
රත්නපුර	රත්නපුර	Rathnapura	2,709,552.21	876.95	8,478.86	47,535.22	84,134.00	35,755.82
කෑගල්ල	කෑගල්ල	Kegalla	1,512,634.43	28.80	3,234.46	32,964.82	71,535.62	26,894.15
අනුරාධපුර	අනුරාධපුර	Anuradhapura	2,131,255.89	5,502.68	15,733.64	37,860.38	79,055.79	26,239.38
පොලොන්නරුව	පොලොන්නරුව	Polonnaruwa	1,114,692.33	1,093.11	4,356.74	18,602.07	38,886.22	10,846.51
පායපාය	පායපාය	Jaffna	2,801,753.51	33,623.49	1,555.71	8,555.75	23,190.87	5,776.20
වවුනියා	වවුනියා	Vavuni	1,052,607.74	-	1,554.15	4,115.88	11,771.28	3,134.65
මන්නාරම	මන්නාරම	Mannar	563,257.55	4,180.50	665.25	5,210.93	6,793.15	1,158.12
කිලිනොච්චි	කිලිනොච්චි	Kilinochchi	162,151.25	-	121.50	320.63	1,369.91	325.20
මුලතිව්	මුලතිව්	Mulathivu	158,242.48	-	11.50	301.26	1,500.89	612.13
මඩකලපුව	මඩකලපුව	Baticola	1,903,624.98	462.04	6,389.89	7,935.42	18,839.44	4,406.13
අම්පාර	අම්පාර	Ampara	1,595,090.67	25.12	3,657.80	12,447.19	31,626.54	11,160.66
ත්‍රිකුණාමලය	ත්‍රිකුණාමලය	Trincomalee	1,206,101.15	8,613.63	1,316.57	9,162.03	17,996.79	8,162.15
එකතුව	එකතුව	Total	69,576,054.270	146,264.69	993,516.132	1,121,429.97	1,893,271.01	910,146.42



පරිච්ඡේද "3B"
 පිරිසිදුකිරීමේ "3B"
 Appendix - "3B"

2017 මුදල් වර්ෂය තුළ පරිභෝජනය කරන ලද මත්පැන් මූලාශ්‍රය විවිධ සංඛ්‍යා විස්තර (ලීටර් වලින්)
 2017 நிதியாණ්ඩුවේ මත්පැන් භාවිතයේ විවිධ මූලාශ්‍ර (ලීටර් වලින්)
 Statement of Liquor consumption during the financial year 2017 (in Liters)

දිස්ත්‍රික්කය	மாவட்டம்	District	රුම්	වොඩ්කා	වෙනත්	බෝටල් රුම්	රුම්	අරක්කු
			Rum	Vodka	Other	Bottled Toddy	Toddy	Arrack
කොළඹ	කොழும்பு	Colombo	154,143.80	136,816.09	65,366.24	12,708,326.92	285,977.17	202,530.00
කළුතර	களுத்தறை	Kaluthara	36,742.47	27,651.30	2,236.60	4,425,561.95	11,616.50	369,371.00
ගම්පහ	கம்பஹா	Gampa	78,879.53	63,484.63	9,733.92	9,053,869.24	372,511.44	800,142.00
මහනුවර	கண்டி	Kandy	28,269.01	17,883.32	2,512.37	6,491,260.44	2,903,695.10	850,998.00
මාතලේ	மாதலையர்	Matale	8,528.11	9,383.51	689.59	2,580,751.73	411,531.62	-
නුගේගොඩ	நுவர-எலியர்	Nuwara-Eliya	10,993.10	7,976.35	3,070.85	4,875,663.58	3,007,723.61	768,758.88
කුරුම	கुरुநாகல்	Kurunegala	20,107.44	19,031.63	199.76	4,811,599.02	107,942.63	327,306.00
පුත්තලම	புத்தளம்	Puttalam	18,091.20	20,647.64	665.95	1,921,535.16	708.50	313,463.00
බදුල්ල	பதளை	Badulla	15,041.98	9,932.50	25,528.25	3,455,481.39	2,017,327.56	1,094,421.50
මොණරාගල	மொனராகலை	Monaragala	9,141.61	17,672.20	17.92	1,914,002.82	74,044.15	-
ගාල්ල	காலி	Galla	126,868.63	34,660.46	12,058.26	4,351,938.88	111,627.72	-
මාතලේ	மாதலையர்	Mathara	27,731.47	26,840.61	1,842.86	7,651,952.51	155,063.13	-
හම්බන්තොට	அம்பாந்தோட்டை	Hambantota	17,720.77	13,309.89	719.70	3,564,140.97	12,133.38	2,532.50
රත්නපුර	இரத்தினபுரி	Rathnapura	12,204.27	13,811.36	864.30	4,569,176.30	357,265.10	426,859.25
කෑගල්ල	கேகாலை	Kegalla	9,214.15	9,867.36	128.76	2,348,937.41	133,065.00	-
අනුරාධපුර	அனுராதபுரம்	Anuradhapura	13,239.04	13,482.40	1,156.41	3,206,489.89	85,555.00	90,693.00
පොළොන්නරුව	பொலன்னறைவை	Polonnaruwa	5,148.47	7,663.71	1,109.28	1,560,062.17	59,944.07	-
පාපය	பாழ்ப்பாணம்	Jaffna	2,085.50	2,171.74	12.80	1,819,526.05	129,989.88	3,620,099.32
වෑවුනියා	வவுனியர்	Vavuni	1,298.42	931.76	-	779,759.47	262,222.50	176,524.00
මන්නාරම	மன்னார்	Mannar	447.97	526.17	-	395,644.94	139,678.50	333,928.00
කිලිනොච්චි	கிளிநொச்சி	Kilinochchi	99.42	41,358.00	-	50,361.93	260,328.13	1,475,821.13
මුලතිව්	முல்லைத்தீவு	Mulathivu	178.34	177.75	-	107,382.57	1,403.13	-
බැටිකල්ල	மட்டக்களப்பு	Batigala	7,922.90	3,506.43	585.87	1,316,690.93	45,884.00	312,256.00
අම්පාර	அம்பாறை	Ampara	7,767.28	4,504.02	5.95	1,712,288.97	15,163.32	-
ත්‍රිකුණාමලය	திருகோணமலை	Trincomalee	6,197.05	3,815.82	414.04	1,152,409.38	31,797.40	-
එකතුව	மொத்தம்	Total	618,061.886	507,106.625	128,919.65	86,824,814.574	10,994,198.494	11,165,703.57

පට්ටිය "4A"
 பிரதேசர்க்கை "4A"
 Appendix "4A"

2017 ஆம் நிதியாண்டில் மதுவரி அலுவலர்களினால் புகையிலை வரிச் சட்டத்தின் கீழ் மேற்கொள்ளப்பட்ட கற்றிவகைப்புகளின் விவரம்
 2017 Excise returns filed by officers under the Tobacco Tax Act detected by Excise Officers - year 2017

දිස්ත්‍රික්කය	மாவட்டம்	District	ලාභය කරන ලද කළු සංඛ්‍යාව	අත්අඩංගුවට ගත් ටැංකරුවන් සංඛ්‍යාව	පනවන ලද දඩ මුදල	ලාභය කරන ලද සංඛ්‍යාව	ලාභය කරන ලද බඩ සංඛ්‍යාව	පනවන ලද දඩ මුදල
දිස්ත්‍රික්කය	மாவட்டம்	District	No. of offences raided	No. of offenders taken into custody	Fine imposed	No. of detected Cigarettes	No. of detected Beedi	Fine imposed
කොළඹ	කොලඹ	Colombo	101	101	920,400,000	93,472	-	-
ගම්පහ	ගම්පහ	Gampaha	350	350	1,101,500,000	2,716	38,000	-
කුලතර	කුලතර	Kalutara	26	26	60,000,000	185	-	40,000,000
කන්දිය	කන්දිය	Kandy	108	108	840,400	129	64,558	839,500
මාතලේ	මාතලේ	Matale	26	26	622,000	320	-	622,000
නුවැරෙලියා	නුවැරෙලියා	Nuwara- Eliya	84	84	2,144,000	5,393	1,167	153,000
ගාල්ල	ගාල්ල	Galle	99	99	127,000,000	193	-	-
මාතලේ	මාතලේ	Matale	14	14	201,500,000	36,643	4,620	201,500,000
හම්බන්තොට	හම්බන්තොට	Hambantota	2	2	23,000,000	38	1,275	23,000,000
යාපනය	යාපනය	Jaffna	192	192	79,500,000	3	-	7,000,000
මන්නාරම	මන්නාරම	Mannar	21	21	29,700,000	-	5,990	29,700,000
වවුනියා	වවුනියා	Vavunia	1	1	1,000,000	-	5	1,000,000
කිලිනොච්චිය	කිලිනොච්චිය	Kilinochchi	11	11	-	-	89,892	-
මුලතිව්	මුලතිව්	Mulathivu	10	10	-	-	-	-
බැටුලෙය	බැටුලෙය	Batticaloa	27	27	47,000,000	485	-	47,000,000
අම්පාර	අම්පාර	Ampara	254	254	79,850	2,990	23,787	265,350,000
ත්‍රිකුණාමලය	ත්‍රිකුණාමලය	Trincomalee	27	27	132,000	478	37,000	132,000,000
කුරුමුල්ල	කුරුමුල්ල	Kurunegala	59	59	141,000,000	531	3,000	141,000,000
පුත්තම	පුත්තම	Puttalam	446	446	683,000,000	1,460	2,000	12,000,000
අනුරාධපුර	අනුරාධපුර	Anuradhapura	23	23	130,500,000	4,894	326,400	1,193,200,000
පොලොන්නරුව	පොලොන්නරුව	Polonnaruwa	6	6	35,000,000	13	20,000	35,000,100
බදුල්ල	බදුල්ල	Badulla	2	2	10,000,000	-	2,970	10,000,000
මොණරාගල	මොණරාගල	Monaragala	7	7	115,000,000	30	37,000	115,000,000
රත්නපුර	රත්නපුර	Rathnapura	438	438	1,915,200	19,830	255,229	1,668,500
කෑගල්ල	කෑගල්ල	Kegalla	20	20	148,000	3,662	20 kg	138,000,000
මත්ලේ	මත්ලේ	Narcotic- Unit	4	4	535,000	100,120	-	-
විලප්පි මහලය	වි.සෙ.පි.(කොලොම්බො)	B.S.O. (Colombo)	7	7	116,000	133	100	-
විලප්පි මහලය	වි.සෙ.පි.(කන්දිය)	B.S.O. (Kandy)	12	12	-	-	-	-
විලප්පි මහලය	වි.සෙ.පි.(ගාල්ල)	B.S.O. (Galle)	-	-	-	-	-	-
විලප්පි මහලය	වි.සෙ.පි.(වැයාම්බා)	B.S.O. (Wayamba)	10	10	10,000,000	67	-	10,000,000
විලප්පි මහලය	වි.සෙ.පි.(වැයාම්බා මධ්‍යම)	B.S.O. (N.Central)	98	98	143,500,000	1,163	800	143,500,000
එකතුව	එකතුව	Total	2,485	2,485	10,184,550,000	274,948	913,793	40,785,350,000

Appendices

පරිච්ඡේද "4B"
 பிற்சேர்க்கை "4B"
 Appendix "4B"

2017 ஆம் நிதியாண்டில் மதுவரி அலுவலர்களினால் புகைகயிலை மற்றும் மதுபானம் மீதான தேசிய அழிவுகரசவைச் சட்டத்தின் கீழ் மேற்கொள்ளப்பட்ட சுற்றிவளைப்புக்களின் விபரம்
 2017 இடல் வர்வல வுல கராலுட கிலேடர்ன் பிகித் டூலலல வல மடெகார் டிபிலேட டாநிக அபெகார் பவல யடுலே கர்வ லே லுலலலலலலல லிகலர்
 Offences detected by Excise Officers under the National Authority Act on Tobacco and Alcohol in the financial year 2017

දිස්ත්‍රික්කය	மாவட்டம்	District	ලලකේය කරන ලද නළු සංඛ්‍යාව சுற்றிவளைப்பு மேற்கொள்ளப்பட்ட வழக்கு எண்.No. of offences raided	අත්අඩංගුවට ගත් වරදකරුවන් සංඛ්‍යාව කෙසේ ලබාගන්නා ලදී No. of offenders taken into custody	පවතින ලද දඩ මිලද விதிக்கப்பட்ட குற்றப்பணம் Fine imposed
කොළඹ	කොලඹ	Colombo	97	-	91,500.00
ගම්පහ	ගම්පහ	Gampaha	117	-	168,000.00
කුලුතර	කුලුතර	Kalutara	0	-	28,000.00
කහුගල	කහුගල	Kandy	966	-	1,702,500
මාතලේ	මාතලේ	Matale	153	-	185,500
නුවරඑළිය	නුවරඑළිය	Nuwara-Eliya	410	-	895,000
ගාල්ල	ගාල්ල	Galle	13	-	48,000.00
මාතර	මාතර	Matara	-	-	-
හම්බන්තොට	හම්බන්තොට	Hambantota	234	-	505,500
යාපනය	යාපනය	Jaffna	530	-	536,500.00
මන්නාරම	මන්නාරම	Mannar	197	-	187,000.00
වවුනියාව	වවුනියාව	Vavunia	173	-	526,000.00
කිලිනොච්චිය	කිලිනොච්චිය	Kilinochchi	76	-	152,000.00
මුලතිව්	මුලතිව්	Mulathivu	54	-	44,000.00
මඩකලපුව	මඩකලපුව	Baticola	167	-	418,500.00
අම්පාර	අම්පාර	Ampara	315	-	564,350.00
ත්‍රිකුණාමලය	ත්‍රිකුණාමලය	Trincomalee	-	-	-
කුරුණෑගල	කුරුණෑගල	Kurunegala	92	-	208,000.00
පුත්තලම	පුත්තලම	Puttalam	116	-	333,500.00
අනුරාධපුර	අනුරාධපුර	Anuradhapura	207	-	338,500.00
පොලොන්නරුව	පොලොන්නරුව	Polonnaruwa	27	-	81,000.00
බදුල්ල	බදුල්ල	Badulla	215	-	739,000.00
මොනරාගල	මොනරාගල	Monaragala	96	-	212,000.00
රත්නපුර	රත්නපුර	Rathnapura	95	-	250,500
කෑගල්ල	කෑගල්ල	Kegalla	49	-	76,500.00
මන්දලේ නාගක අංශය	මන්දලේ නාගක අංශය	Narcotic- Unit	0	-	-
විශේෂ මෙහෙයුම් ඒකකය (කොළඹ)	වි.සෙ.පී.(කොළඹ)	B.S.O. (Colombo)	-	-	-
විශේෂ මෙහෙයුම් ඒකකය (වටොල)	වි.සෙ.පී.(කහුගල)	B.S.O. (Kandy)	-	-	-
විශේෂ මෙහෙයුම් ඒකකය (දකුණ)	වි.සෙ.පී.(ගාල්ල)	B.S.O. (Galle)	-	-	-
විශේෂ මෙහෙයුම් ඒකකය (වයඹ)	වි.සෙ.පී.(වැඩ මුහුණ)	B.S.O. (Wayaba)	7	-	5,000.00
විශේෂ මෙහෙයුම් ඒකකය (උ.ද)	වි.සෙ.පී.(වැඩ මත්තිය)	B.S.O. (N. Central)	-	-	40,000.00
එකතුව	මොත්තිය	Total	4,406	-	7,751,850.00

පරිච්ඡේද "5A"
Appendix "5A"
විග්ලෝකය "5A"

කරාබද පදනම අනුව මත්ද්‍රව්‍ය ආශ්‍රිත අත් අඩංගු වූ මත්ද්‍රව්‍ය
මත්වැඩි පිරිසේ රැකියාකරුවන්ගේ මත්ද්‍රව්‍ය අත් අඩංගු වූ මත්ද්‍රව්‍ය
Drug Related Arrests by Excise Areas and Quantity of Drugs

කොප්පු
කොප්පු
Cannabis

ප්‍රදේශය	ප්‍රදේශය	ප්‍රදේශය	2017				අධිකරණ වර්ගය Court Category			අත්අඩංගු වූ මත්ද්‍රව්‍ය Result			මරණ දඬුවම Death Penalty මරණ තඹසන	
			මුහුණ දීමේ සංඛ්‍යාව Number of Detection	මුහුණ දීමේ සංඛ්‍යාව Number of Detection		මුහුණ දීමේ සංඛ්‍යාව Number of Detection	මුහුණ දීමේ සංඛ්‍යාව Number of Detection	මුහුණ දීමේ සංඛ්‍යාව Number of Detection	මුහුණ දීමේ සංඛ්‍යාව Number of Detection	මුහුණ දීමේ සංඛ්‍යාව Number of Detection	මුහුණ දීමේ සංඛ්‍යාව Number of Detection	මුහුණ දීමේ සංඛ්‍යාව Number of Detection		මුහුණ දීමේ සංඛ්‍යාව Number of Detection
				මුහුණ දීමේ සංඛ්‍යාව Number of Detection	මුහුණ දීමේ සංඛ්‍යාව Number of Detection									
බස්නාහිර පළාත I	බස්නාහිර පළාත I	බස්නාහිර පළාත I	1,888	5,498	170	-	-	1,887	1	4,126,100.00	-	9	-	
බස්නාහිර පළාත II	බස්නාහිර පළාත II	බස්නාහිර පළාත II	103	576	430	-	-	103	-	306,000.00	-	HOURS350	-	
බස්නාහිර පළාත III	බස්නාහිර පළාත III	බස්නාහිර පළාත III	461	953	680	-	1	461	-	869,500.0000	-	4	-	
පැමැති I	බැ.ම.ම. I	බැ.ම.ම. I	97	433	400	-	-	97	-	117,800.00	-	2	-	
පැමැති II	බැ.ම.ම. II	බැ.ම.ම. II	225	59,564	590	-	-	224	1	1,312,000.00	-	-	-	
පැමැති III	බැ.ම.ම. III	බැ.ම.ම. III	106	26,047	573	-	-	104	2	409,000.00	3	-	-	
පැමැති IV	බැ.ම.ම. IV	බැ.ම.ම. IV	89	1,089	310	-	31	87	2	402,500	1	-	-	
පැමැති V	බැ.ම.ම. V	බැ.ම.ම. V	90	14,469	820	132,320	102,515	89	1	323,000.00	-	-	-	
පැමැති VI	බැ.ම.ම. VI	බැ.ම.ම. VI	121	1,631	650	8,895	119	120	1	545,500.00	-	8	-	
පැමැති VII	බැ.ම.ම. VII	බැ.ම.ම. VII	180	4,341	930	-	-	179	1	663,000.00	-	7	-	
පැමැති VIII	බැ.ම.ම. VIII	බැ.ම.ම. VIII	3	76,081	-	-	-	1	2	-	2	-	-	
පැමැති IX	බැ.ම.ම. IX	බැ.ම.ම. IX	27	25,969	230	3	1	25	2	209,500.00	1	-	-	
පැමැති X	බැ.ම.ම. X	බැ.ම.ම. X	71	7,327	170	-	-	69	2	553,000.00	-	3	-	
පැමැති XI	බැ.ම.ම. XI	බැ.ම.ම. XI	35	571,335	680	13,250	32	32	3	163,500.00	-	-	-	
පැමැති XII	බැ.ම.ම. XII	බැ.ම.ම. XII	31	13,942	150	49,897	2,760	30	1	221,000	-	-	-	
පැමැති XIII	බැ.ම.ම. XIII	බැ.ම.ම. XIII	88	70,434	450	-	-	87	1	249,500.00	-	2	-	
පැමැති XIV	බැ.ම.ම. XIV	බැ.ම.ම. XIV	34	54	110	-	-	34	-	149,000.00	-	1	-	
පැමැති XV	බැ.ම.ම. XV	බැ.ම.ම. XV	25	12,053	500	-	-	24	1	125,500.00	1	-	-	
පැමැති XVI	බැ.ම.ම. XVI	බැ.ම.ම. XVI	224	46,346	70	-	5,500	224	-	788,500.00	1	-	-	
මුළුමන	මුළුමන	මුළුමන	3,898	938,142	7,913	191,115	124,177	3,877	21	10,325,400.00	9	36	-	

Appendices

පරිච්ඡේද "5B"
 பிரச்சாரக்கை "5B"
 Appendix "5B"

සරාමිද පදේශ අනුව මත්ද්‍රව්‍ය ආශ්‍රිත අත් අඩංගුවට ගැනීම් සහ මත්ද්‍රව්‍ය ප්‍රමාණය
 மதுவரி பிரதேச ரீதியாக போதைப்பொருள் தொடர்மான கைதுகளும் போதைப்பொருள் வகைகளும்
Drug Related Arrests by Excise areas and Quantity of drugs

கைரோசின்
 ஹெரோயின்
Heroin

පදේශය	ප්‍රදේශය	ප්‍රදේශය	2017			අධිකරණ වර්ගය Court Category		ගෞරව්‍ය ප්‍රතිඵල Result			මරණ දඬුවම Death Penalty මරණ தண்டனை
			අනුමත සංඛ්‍යාව சுற்றிவரைய எண் Number of Detection	ප්‍රමාණය ග්‍රෑම් கிராம் gram	ප්‍රමාණය මිලිග්‍රෑම් Quantity milli gram	මෙස්ට්‍රේට් අධිකරණ නීතිඥාණ්ඩ Magistrate Court	මහාධිකරණ මෙස් නීතිඥාණ්ඩ High Court	රු. ඩ. Rs.	මරණගාරය சிறை Prison	ප්‍රාග්ධන සේවාව Comm. Service	
වයඹ පළාත I	මෙස් මාතලේ I	626	206	450	618	8	4,626,000.00	-	14	-	
වයඹ පළාත II	මෙස් මාතලේ II	27	4	650	26	1	83,000.00	-	Hours500	-	
වයඹ පළාත III	මෙස් මාතලේ III	381	66	3,310	380	1	2,317,000.00	1	7	-	
වයඹ I	වැ. මෙස් I	26	7	84	-	-	170,000	-	-	-	
වයඹ II	වැ. මෙස් II	80	10	972	80	-	565,000.00	-	12	-	
උතුරු මැද	වැ. මත්තිය	30	4	423	30	-	190,000.00	-	-	-	
මධ්‍යම	මත්තිය	19	4	665	17	2	144,000	-	-	-	
උතුරු	උතුරු	1	-	50	1	-	-	-	-	-	
පුරාවිද්‍යා	පුරාවිද්‍යා	10	2	1,325	9	1	121,000	-	-	-	
දකුණ	දකුණ	81	27	1,580	78	1	401,500.00	-	5	-	
උතුරු I	උතුරු I	1	1,491	41	1	-	-	1	-	-	
උතුරු II	උතුරු II	2	-	170	2	-	-	1	-	-	
නැගෙනහිර	නැගෙනහිර	9	-	1,327	9	-	145,000	-	-	-	
වි.මෙ.පි. (කොළඹ)	වි.මෙ.පි. (කොළඹ)	20	4	140	20	-	169,000	-	-	-	
වි.මෙ.පි. (බැංකු)	වි.මෙ.පි. (බැංකු)	77	19	240	77	-	411,000	-	6	-	
වි.මෙ.පි. (පාලි)	වි.මෙ.පි. (පාලි)	8	-	670	-	-	35,000	-	-	-	
වි.මෙ.පි. (දකුණ)	වි.මෙ.පි. (දකුණ)	18	5	-	18	-	137,500.00	-	-	-	
මුහුදු මාර්ග	මුහුදු මාර්ග	644	2,686	555	644	-	4,035.500	-	15	-	
එකතුව	එකතුව	2,060	4,535	12,652	2,010	14	8,996,656.50	3	59	-	

පරිච්ඡේද "5C"
 විගණක "5C"
 Appendix "5C"

සුවිදායුද්ධ අවලංගු කර ඇති අවංගු කරුණු මගින් අවංගු කර ඇති ප්‍රදේශය
 මතුපිට විගණක විගණක විගණක විගණක විගණක විගණක විගණක විගණක විගණක විගණක විගණක
 Drug Related Arrests by Excise areas and Quantity of drugs

වෙනත්
 ඉතාහොඳ
 OTHER DRUGS

ප්‍රදේශය	විගණක	Area	2017			අධිකරණ වර්ගය Court Category	අවලංගු කර ඇති ප්‍රදේශය Result			මරණ Penalty මරණ දඬුවම්	
			අවලංගු කර ඇති ප්‍රදේශය Quantity	අධිකරණ වර්ගය Court Category	අධිකරණ වර්ගය Court Category		අධිකරණ වර්ගය Court Category	අධිකරණ වර්ගය Court Category			
									අධිකරණ වර්ගය Court Category		අධිකරණ වර්ගය Court Category
බස්නාහිර පළාත I	මෙර මහල	Western Province I	142	67	1,780	139	3	802,000	-	-	-
බස්නාහිර පළාත II	මෙර මහල	Western Province II	3	-	-	3	-	15,000.00	-	-	-
බස්නාහිර පළාත III	මෙර මහල	Western Province III	-	-	-	-	-	-	-	-	-
වයඹ I	මෙර මහල	North Western I	-	-	-	-	-	-	-	-	-
වයඹ II	මෙර මහල	North Western II	3	23	6	3	-	-	-	1	-
උතුරු මැද	මෙර මහල	North Central	4	1,241	93	4	-	32,000.00	-	-	-
මධ්‍යම	මෙර මහල	Central	-	-	-	-	-	-	-	-	-
ඊශ්ව	මෙර මහල	Uva	-	-	-	-	-	-	-	-	-
සබරගමුව	මෙර මහල	Sabaragamuwa	14	900	200	14	-	241,000	-	-	-
දකුණ	මෙර මහල	Southern	4	254	300	4	-	27,500.00	-	-	-
උතුරු I	මෙර මහල	Northern I	-	-	-	-	-	-	-	-	-
උතුරු II	මෙර මහල	Northern II	1	-	6	1	-	-	1	-	-
නැගෙනහිර	මෙර මහල	Eastern	1	-	-	1	-	8,000	-	-	-
වි.මෙ.පි. (කොළඹ)	මෙර මහල	B.S.O Colombo	-	-	-	-	-	-	-	-	-
වි.මෙ.පි. (මාතලේ)	මෙර මහල	B.S.O Central	-	-	-	-	-	-	-	-	-
වි.මෙ.පි. (වයඹ)	මෙර මහල	B.S.O. (North Western)	-	-	-	-	-	-	-	-	-
වි.මෙ.පි. (දකුණ)	මෙර මහල	B.S.O. (Southern)	-	-	-	-	-	-	-	-	-
වි.මෙ.පි. (උතුරු මැද)	මෙර මහල	B.S.O. (North Central)	-	-	-	-	-	-	-	-	-
වෙනත් ප්‍රදේශ	මෙර මහල	Narcotic-Unit	13	71	970	13	-	53,000	-	-	-
එකතුව	මෙර මහල	Total	185	2,556	3,355	182	3	857,294.00	1	1	-



පරිච්ඡේදය "5D"
 பிற்சேர்க்கை "5D"
 Appendix "5D"

සිතී / පරිලභ භාවය සහ වරද අනුව බන්ධනාගාරවල කිරීම්

பரல்ரிதியாகவும் தவறு ரீதியாகவும் சிறைவாசம்

Prison Admissions by sex and Offence

අදේශය	பிரதேசம்	Area	2017					
			මත්ද්‍රව්‍ය භාග්‍යාභිමතය		Narcotic		Excise	
			පිරිමි	මැමුණු	පිරිමි	මැමුණු	පිරිමි	මැමුණු
බන්ධනාගාර පලාය I	මෙම මාකාණය I	Western Province I	5	-	1	-	-	-
බන්ධනාගාර පලාය II	මෙම මාකාණය II	Western Province II	-	-	-	-	-	-
බන්ධනාගාර පලාය III	මෙම මාකාණය III	Western Province III	2	-	-	2	-	-
වයඹ I	වැඩ මෙම I	Wayaba I	1	-	1	-	-	-
වයඹ II	වැඩ මෙම II	Wayaba II	-	-	-	-	-	-
උතුරු මැද	වැඩ මත්තිය	North Central	4	-	-	-	-	-
මධ්‍යම	මත්තිය	Central	1	-	-	-	-	-
උව	නවවා	Uva	-	-	-	-	-	-
සබරගමුව	සඵරකඵුව	Sabaragamuwa	-	-	-	2	-	-
දකුණ	දෙණ	Southern	-	-	-	-	-	-
උතුර I	වැඩ I	Northern I	3	-	-	-	-	-
උතුර II	වැඩ II	Northern II	2	-	-	1	-	-
නැගෙනහිර	කිඵුකු	Eastern	-	-	-	-	-	-
වි.මෙ.ඒ. (කොලඹ)	වි.මෙ.ඒ. (කොලඹ)	B.S.O Colombo	-	-	-	-	-	-
වි.මෙ.ඒ. (මධ්‍යම)	වි.මෙ.ඒ. (මත්තිය)	B.S.O Central	-	-	-	-	-	-
වි.මෙ.ඒ. (වයඹ)	වි.මෙ.ඒ. (වැඩ මෙම)	B.S.O. (North Western)	-	-	-	-	-	-
වි.මෙ.ඒ. (දකුණ)	වි.මෙ.ඒ. (දෙණ)	B.S.O. (Southern)	-	-	-	-	-	-
වි.මෙ.ඒ. (උ. මැද)	වි.මෙ.ඒ. (වැඩ මත්තිය)	B.S.O. (North Central)	1	-	-	-	-	-
මත්ද්‍රව්‍ය නාශක ආංශය	භාග්‍යාභිමතය	Narcotic- Unit	-	-	-	-	-	-
එකතුව	මොත්තම	Total	19	-	2	5	-	-

පරිලේඛන "5E"
 பிரளேக்கை "5E"
 Appendix "5E"

වයස අනුව මත්ද්‍රව්‍ය ජාවලි අත්අඩංගුවට ගැනීම්
வயது ரீதியாக போதைப்பொருள் தொட்டியற்ற கைதுகள்

දුර්ග්‍රහ	ප්‍රදේශය	ප්‍රදේශය	වයස අනුව මත්ද්‍රව්‍ය ජාවලි අත්අඩංගුවට ගැනීම්																	
			2017						2017						2017					
			වයස අ. 15-19 Yrs	වයස අ. 20-24 Yrs	වයස අ. 25-29 Yrs	වයස අ. 30 and Over	වයස අ. 15-19 Yrs	වයස අ. 20-24 Yrs	වයස අ. 25-29 Yrs	වයස අ. 30 and Over	වයස අ. 15-19 Yrs	වයස අ. 20-24 Yrs	වයස අ. 25-29 Yrs	වයස අ. 30 and Over	වයස අ. 15-19 Yrs	වයස අ. 20-24 Yrs	වයස අ. 25-29 Yrs	වයස අ. 30 and Over		
මත්කර් පලාත I	මුගල් මාර්කාණ්ඩ I	27	217	859	785	44	110	251	222	-	9	22	60	38						
මත්කර් පලාත II	මුගල් මාර්කාණ්ඩ II	-	11	44	48	2	5	18	-	-	-	-	-	3						
මත්කර් පලාත III	මුගල් මාර්කාණ්ඩ III	10	82	116	253	-	7	78	108	-	188	-	-	-						
මත්කර් I	බැ.ල. මුගල් I	1	47	29	20	-	26	-	-	-	-	-	-	-						
මත්කර් II	බැ.ල. මුගල් II	-	67	108	50	-	42	33	5	-	-	-	-	1						
මත්කර් මුද්	බැ.ල. මත්තීය	2	24	29	51	-	9	9	12	-	-	-	-	1						
මත්කර් මුද්	බැ.ල. මත්තීය	3	33	35	18	-	5	9	5	-	-	-	-	-						
මත්කර්	උවාව	1	26	20	43	-	-	-	1	-	-	-	-	2						
මත්කර්	සැබරාගමුව	31	18	20	52	-	3	1	1	-	-	4	8	2						
මත්කර්	දකුණ	10	38	72	60	-	14	18	49	-	-	-	-	4						
මත්කර් I	බැ.ල. I	-	1	-	2	-	-	-	2	-	-	-	-	-						
මත්කර් II	බැ.ල. II	1	8	3	15	-	1	1	-	-	-	1	-	-						
මත්කර්	නැගෙනහිර	-	3	3	65	-	1	4	3	-	-	-	-	-						
මත්කර්	නැගෙනහිර	-	-	-	35	-	-	-	8	-	-	-	-	-						
මත්කර්	බී.ඊ.සී. (කොළඹ)	-	-	-	21	-	-	-	3	-	-	-	-	-						
මත්කර්	බී.ඊ.සී. (මාතලේ)	-	3	7	19	-	5	12	3	-	-	-	-	-						
මත්කර්	බී.ඊ.සී. (පානදුර)	-	23	46	19	-	16	32	29	-	-	-	-	-						
මත්කර්	බී.ඊ.සී. (දකුණ)	-	-	-	34	-	-	-	8	-	-	-	-	-						
මත්කර්	බී.ඊ.සී. (දකුණ)	-	-	-	19	-	-	-	8	-	-	-	-	-						
මත්කර්	බී.ඊ.සී. (බැ.ල. මත්තීය)	-	69	88	67	-	67	101	476	-	-	3	4	10						
මත්කර්	බී.ඊ.සී. (බැ.ල. මත්තීය)	-	67	88	67	-	67	101	476	-	-	3	4	10						
මත්කර්	මුගල් මාර්කාණ්ඩ	86	670	1,485	1,657	47	314	574	940	-	197	30	74	64						
මත්කර්	මුගල් මාර්කාණ්ඩ	86	670	1,485	1,657	47	314	574	940	-	197	30	74	64						

පරිච්ඡේදය "5F"
 பிற்சேர்க்கை "5F"
 Appendix "5F"

මත්ද්‍රව්‍ය සහ ඉරාබිද ප්‍රදේශය අනුව මත්ද්‍රව්‍ය අත්අඩංගුවට ගැනීම්
போதைப்பொருள்களின் பிந்தேச ரீதியாகவும் போதைப்பொருள் தொடர்பற்ற கைதுகள்
Drug Related Arrests by Drug & Excise Area

ප්‍රදේශය	பிரதேசம்	Area	2017				එකතුව மொத்தம் Total
			කංසා கannabis	හෙරොයින් Heroin	වෙනත් ஏனையன Other	එකතුව மொத்தம் Total	
වස්තෘකීර් පළාත I	මෙම මාකාණම I	Western Province I	1,889	625	142	2,656	
වස්තෘකීර් පළාත II	මෙම මාකාණම II	Western Province II	101	27	3	55	
වස්තෘකීර් පළාත III	මෙම මාකාණම III	Western Province III	464	381	-	845	
වයඹ I	වැඩ මෙම I	Wayaba I	97	26	-	123	
වයඹ II	වැඩ මෙම II	Wayaba II	225	80	3	308	
උතුරු මැද	වැඩ මත්තිය	North Central	105	30	4	139	
මධ්‍යම	මත්තිය	Central	91	19	-	110	
උවාව	ඔහුවා	Uva	90	1	2	93	
සබරගමුව	සඵරකඵුව	Sabaragamuwa	117	10	14	102	
දකුණ	දෙතන්	Southern	180	81	4	265	
උතුර I	වැඩ I	Northern I	3	1	-	4	
උතුර II	වැඩ II	Northern II	27	2	1	30	
නැගෙනහිර	කිඵුකු	Eastern	71	9	1	81	
වි.මෙ.ඒ. (කොළඹ)	වි.මෙ.ඒ.(කොළඵු)	B.S.O Colombo	-	-	-	-	
වි.මෙ.ඒ. (මධ්‍යම)	වි.මෙ.ඒ.(මත්තිය)	B.S.O Central	32	20	-	52	
වි.මෙ.ඒ. (වයඹ)	වි.මෙ.ඒ.(වැඩ මෙම)	B.S.O. (North Western)	88	77	-	165	
වි.මෙ.ඒ. (දකුණ)	වි.මෙ.ඒ.(දෙතන්)	B.S.O. (Southern)	34	8	-	42	
වි.මෙ.ඒ. (උතුරු මැද)	වි.මෙ.ඒ.(වැඩ මත්තිය)	B.S.O. (North Central)	25	18	-	43	
මත්ද්‍රව්‍ය නාශක අංශය	போதைப்பொருள் அலகு	Narcotic- Unit	225	644	33	902	
එකතුව	மொத்தம்	Total	3,864	2,059	207	6,015	

පරිච්ඡේද "6A"
பிற்சேர்க்கை "6A"
Appendix "6A"

2017 මුදල් වර්ෂය තුළ (සමභව කළ නොහැකිව තිබූ) අපරාධ විභේදනාත්මක සංඛ්‍යා විස්තර සටහන
2017 நிதியாண்டில் (உடன்பாட்டுக்கு வரமுடியாத) குற்றங்களின் வகைப்படுத்தப்பட்ட பிரித்தொடுப்பு
Classified abstract (non compoundable crimes) statement for the financial Year 2017

Offence description	2017 වර්ෂය තුළ අර්ථ දැක්වූ අපරාධ (2017 මුදල් වර්ෂය තුළ අර්ථ දැක්වූ අපරාධ)	2016 මුදල් වර්ෂය තුළ අර්ථ දැක්වූ අපරාධ (2016 මුදල් වර්ෂය තුළ අර්ථ දැක්වූ අපරාධ)	2017 මුදල් වර්ෂය තුළ අර්ථ දැක්වූ අපරාධ (2017 මුදල් වර්ෂය තුළ අර්ථ දැක්වූ අපරාධ)	2017 මුදල් වර්ෂය තුළ අර්ථ දැක්වූ අපරාධ (2017 මුදල් වර්ෂය තුළ අර්ථ දැක්වූ අපරාධ)	2017 මුදල් වර්ෂය තුළ අර්ථ දැක්වූ අපරාධ (2017 මුදල් වර්ෂය තුළ අර්ථ දැක්වූ අපරාධ)	2017 මුදල් වර්ෂය තුළ අර්ථ දැක්වූ අපරාධ (2017 මුදල් වර්ෂය තුළ අර්ථ දැක්වූ අපරාධ)	2017 මුදල් වර්ෂය තුළ අර්ථ දැක්වූ අපරාධ (2017 මුදල් වර්ෂය තුළ අර්ථ දැක්වූ අපරාධ)
1. නීති විරෝධී ලෙස නිපැයීම සඳහා නිපැයීම සඳහා නිපැයීම සඳහා නිපැයීම Unlawful manufacture of liquor (U.M.A.)	1,500	76	1,426	75	1,501	1,498	1
2. Possession of unlawful manufactured liquor (P.U.M.L.) සඳුන්වනු ලබන නිපැයීම සඳහා නිපැයීම සඳහා නිපැයීම සඳහා නිපැයීම	734	40	666	48	736	732	1
3. Possession of unlawful manufactured Spirits (P.U.D.S.) සඳුන්වනු ලබන නිපැයීම සඳහා නිපැයීම සඳහා නිපැයීම සඳහා නිපැයීම	20,360	1,353	14,484	1,899	15,808	20,023	9
4. Possession of Utensils உபகரணங்களை வைத்திருத்தல் (පැවරීම) අවිනිශ්චිතව තබා ගැනීම	48	2	58	34	60	60	-
5. රටකින් පිටතට අනුමත නොවන ලද වැදීම Foreign Liquor Offence	1,913	317	1,741	150	1,911	1,911	-
6. Unlawful sales of Arrack (U.S.A.) නීති විරෝධී ලෙස අරක්කු විකිණීම	3,016	201	2,749	210	3,011	3,011	10
7. නීති විරෝධී ලෙස අරක්කු අවිනිශ්චිතව තබා ගැනීම හෝ වෙනත් ආකාරයකින් සඳුන්වනු ලබන නිපැයීම සඳහා නිපැයීම සඳහා නිපැයීම සඳහා නිපැයීම Unlawful possession or unlawful transport of arrack (U.P.A., U.T.A.)	27	1	27		27	27	
8. Unlawful sales of toddy (U.S.T.) සඳුන්වනු ලබන නිපැයීම සඳහා නිපැයීම සඳහා නිපැයීම නීති විරෝධී ලෙස රි ටොඩි විකිණීම	2,854	86	2,852	56	2,843	2,843	1,125
9. Unlawful possession or unlawful transport of Toddy (U.P.T.) සඳුන්වනු ලබන නිපැයීම සඳහා නිපැයීම සඳහා නිපැයීම සඳහා නිපැයීම නීති විරෝධී ලෙස රි ටොඩි විකිණීම හෝ වෙනත් ආකාරයකින්	3,821	227	3,597	150	3,870	3,870	408
9. වෙනත් වැදීම වීථි තහනමන් Other Offence	6,669	482	6,335	340	6,302	6,302	292
Total ගොනු කළ අපරාධ	40,942	2,785	33,935	2,962	36,069	40,277	1,846



Appendices

පරිච්ඡේද "6B"
 පිරිසேරුණු "6B"
 Appendix "6B"

2017 මුදල් වර්ෂය තුළ (සමත කළ නොහැකිව තිබූ) අපරාධ විලිඛිත විශේෂණාත්මක සංඛ්‍යා විස්තර සටහන
 2017 நிதியாண்டில் (உடன்பாட்டுக்கு வரமுடியாத) குற்றங்களின் வகைப்படுத்தப்பட்ட பிரித்தெடுப்பு
 Classified abstract (non compoundable crimes) statement for the financial Year 2017

අපරාධ විස්තර (Offence description)	2017 අපරාධ විලිඛිත විශේෂණාත්මක සංඛ්‍යා (Number of cases)	2017 අපරාධ විලිඛිත විශේෂණාත්මක සංඛ්‍යා (Number of cases filed in 2017)				2017 අපරාධ විලිඛිත විශේෂණාත්මක සංඛ්‍යා (Number of cases filed in 2017)	2017 අපරාධ විලිඛිත විශේෂණාත්මක සංඛ්‍යා (Number of cases filed in 2017)
		වාරන්ට් (Warrants)	විචාරණ කොටසක් ලෙස පරිදායනය කළ (is being tried as a part of the trial)	වෙනත් (Others)	මුළු (Total)		
1. නීති විරෝධී ලෙස මත්පැන පෙරීම (U.M.A.) Unlawful manufacture of liquor (U.M.A.)	-	82	54	1	148	-	
2. නීති විරෝධී ලෙස නිපදවීම (P.U.M.L.) Possession of unlawful manufactured liquor (P.U.M.L.)	-	53	16	-	42	-	
3. නීති විරෝධී ලෙස නිපදවීම (P.U.D.S.) Possession of unlawful manufactured Spirits (P.U.D.S.)	5	1,400	87	41	1,596	-	
4. නීති විරෝධී ලෙස නිපදවීම (U.O.) Possession of Utensils உபகரணங்களை வைத்திருத்தல் (U.O.)	1	1	2	-	3	-	
5. විදේශීය මත්පැන (F.L.O.) Foreign Liquor Offence	-	50	8	-	58	-	
6. නීති විරෝධී ලෙස අලුත් කිරීම (U.S.A.) Unlawful sales of Arrack (U.S.A.)	6	122	12	1	76	-	
7. නීති විරෝධී ලෙස අලුත් කිරීම (U.P.A., U.T.A.) Unlawful possession or unlawful transport of arrack (U.P.A., U.T.A.)	-	-	2	-	2	-	
8. නීති විරෝධී ලෙස අලුත් කිරීම (U.S.T.) Unlawful sales of toddy (U.S.T.)	483	23	4	7	35	-	
9. නීති විරෝධී ලෙස අලුත් කිරීම (U.P.T.) Unlawful possession or unlawful transport of Toddy (U.P.T.)	89	79	3	18	95	-	
9. වෙනත් (Other Offence)	148	32	36	28	126	2	
Total	732	1,842	224	96	2,181	2	

පරිච්ඡේද "6C"
 பிரசேர்த்தகை "6C"
 Appendix "6C"

2017 இடல் வரலாறு (සමන කළ නොහැකිව හිඹ) අපරාධ විලිඳු විශේෂණාත්මක සංඛ්‍යා විස්තර සටහන
 2017 நிதியாண்டில் (உடனியாட்டுக்கு வரமுடியாத) குற்றங்களின் வகையப்படுத்தப்பட்ட பிரித்தொடுப்பு
 Classified abstract (non compoundable crimes) statement for the financial Year 2017

2017 පැවැතු වැරදි අතරින් දඩ නොදෙන ලදී හෝ දඩ නොදෙන ලදී නොවන වැරදි	2017 පැවැතු වැරදි අතරින් දඩ නොදෙන ලදී නොවන වැරදි	2017 පැවැතු වැරදි අතරින් දඩ නොදෙන ලදී නොවන වැරදි	2017 පැවැතු වැරදි අතරින් දඩ නොදෙන ලදී නොවන වැරදි	2017 පැවැතු වැරදි අතරින් දඩ නොදෙන ලදී නොවන වැරදි	2017 පැවැතු වැරදි අතරින් දඩ නොදෙන ලදී නොවන වැරදි	2017 පැවැතු වැරදි අතරින් දඩ නොදෙන ලදී නොවන වැරදි	2017 පැවැතු වැරදි අතරින් දඩ නොදෙන ලදී නොවන වැරදි	2017 පැවැතු වැරදි අතරින් දඩ නොදෙන ලදී නොවන වැරදි	2017 පැවැතු වැරදි අතරින් දඩ නොදෙන ලදී නොවන වැරදි
Offence	Number of persons charged	Number of persons charged	Number of persons charged	Number of persons charged	Number of persons charged	Number of persons charged	Number of persons charged	Number of persons charged	Number of persons charged
1. නීති විරෝධී ලෙස මත්පැන් සෙවීම සිදු කිරීම Unlawful manufacture of liquor (U.M.A.)	1354	1	10	1,392	-	-	-	-	36,610,250.00
2. Possession of unlawful manufactured liquor (P.U.M.L.) සිදු කිරීමේදී නොවැරදිව නිපදවූ මත්පැන් සංඛ්‍යාව Possession of unlawful manufactured liquor (P.U.M.L.)	683	1	7	562	2	2	2	2	5,132,110.00
3. Possession of unlawful manufactured Spirits (P.U.D.S.) සිදු කිරීමේදී නොවැරදිව නිපදවූ මත්පැන් සංඛ්‍යාව Possession of unlawful manufactured Spirits (P.U.D.S.)	17,050	21	1597	10,163	3	3	3	3	104,157,630.00
4. Possession of Utensils உபகரணங்களை வைத்திருத்தல் Possession of Utensils உபகரணங்களை வைத்திருத்தல்	415	-	3	100	1	1	1	1	428,500.00
5. Foreign Liquor Offence Foreign Liquor Offence	1,440	-	6	1,200	-	-	-	-	39,172,600.00
6. Unlawful sales of Arrack (U.S.A.) Unlawful sales of Arrack (U.S.A.)	2,855	-	33	1,131	7	7	7	7	18,550,500.00
7. නීති විරෝධී ලෙස රජයේ අයිතියට නොවැරදිව නිපදවූ මත්පැන් සංඛ්‍යාව Unlawful possession or unlawful transport of Toddy (U.P.T.) Unlawful possession or unlawful transport of arrack (U.P.A., U.T.A.)	25	-	-	-	-	-	-	-	439,500.00
8. Unlawful sales of toddy (U.S.T.) Unlawful sales of toddy (U.S.T.)	2,907	-	11	170	483	483	483	483	20,827,000.00
9. Unlawful possession or unlawful transport of Toddy (U.P.T.) Unlawful possession or unlawful transport of arrack (U.P.A., U.T.A.)	3,694	-	4	145	89	89	89	89	9,379,350.00
9. අනෙකුත් වැරදි Other Offences	6,644	3	19	1,320	147	147	147	147	20,334,477.00
Total	37,067	26	1,690	16,183	732	732	732	732	255,031,917.00



පරිච්ඡේදය "7A"
 පිරිසேරුණු "7A"
 Appendix "7A"

2017 මුදල් වර්ෂය තුළ විදේශ මත්පැන් බලපත්‍ර වලින් ලබා ගන්නා ආදායම
 2017 நிதியாண்டில் ලබාගන්නා විදේශ මත්පැන් බලපත්‍ර වලින් ලබා ගන්නා ආදායම
 Statement of Fees Recovered from Foreign liquor licences for the financial Year 2017

දිස්ත්‍රික්කය	මாவட்டය	District	විදේශ මත්පැන් මත්ද්‍රව්‍ය බලපත්‍ර මගින් ලබා ගන්නා ආදායම Foreign Liquor Rents	වෙළඳ මත්පැන් බලපත්‍ර wholesales licences FL-3	සිල්ලු වෙළඳ මත්පැන් බලපත්‍ර Retail Licences FL-4	විවේචනා මත්පැන් බලපත්‍ර Hotel Licences FL-7	විනෝද මත්පැන් බලපත්‍ර Entertainment Bar Licences FL-9	දුම්රිය සේවකාර මත්පැන් බලපත්‍ර Railway restaurant licences FL-10	අනෙකුත් මත්පැන් බලපත්‍ර
කොළඹ	කොළඹ	Colombo	8,278,274.00	14,365,000.00	124,295,834.00	49,424,390.00	1,194,671.00	25,250.00	12,000,000.00
ගම්පහ	ගම්පහ	Gampaha	2,200,150.00	10,220,000.00	58600.000.00	28,930,925.00	1,100,000.00	-	10,000,000.00
කුලුතර	කුලුතර	Kalutara	2,331,082.00	17,300,000.00	11,050,000.00	31,773,750.00	1,962,396.45	-	2,000,000.00
කුරුම	කුරුම	Kandy	21,357,000.00	2,000,000.00	41,950,000.00	3,577,500.00	400,000.00	-	40,000,000.00
මාතලේ	මාතලේ	Matale	-	-	15,750,000.00	244,450,000.00	-	-	-
නුගේගොඩ	නුගේගොඩ	Nuwara-Eliya	33,100,000.00	1,000,000.00	55,750,000.00	14,057,000.00	450,000.00	-	4,500,000.00
ගාල්ල	ගාල්ල	Galle	-	2,100,000.00	26,600,000.00	45,950,000.00	-	-	6,000,000.00
මාතලේ	මාතලේ	Matara	-	-	19,350,000.00	16,500,687.00	1,200,000.00	-	-
හම්බන්තොට	හම්බන්තොට	Hambantota	-	10,000,000.00	68,000,000.00	11,050,000.00	1,200,000.00	-	4,000,000.00
පාසාන	පාසාන	Jaffna	-	-	-	-	-	-	-
මන්නාරම	මන්නාරම	Mannar	-	-	1,900,000.00	900,000.00	-	-	-
වවුනියාව	වවුනියාව	Vavunia	-	2,000,000.00	5,950,000.00	2,755,500.00	400,000.00	-	-
කිලිනොච්චිය	කිලිනොච්චිය	Kilinochchi	-	-	-	1,000,000.00	-	-	-
මුලතිව්	මුලතිව්	Mulathivu	-	-	450,000.00	1,000,000.00	-	-	-
බදුල්ල	බදුල්ල	Baticola	-	200,000.00	11,100,000.00	7,500,000.00	-	-	1,400,000.00
අම්පාර	අම්පාර	Ampara	-	1,000,000.00	8,850,000.00	3,316,668.00	-	-	-
ත්‍රිකුණාමලය	ත්‍රිකුණාමලය	Trincomalee	-	-	6,000,000.00	9,200,000.00	850,000.00	-	4,000,000.00
කුරුම	කුරුම	Kurunegala	-	1,000,000.00	16,750,000.00	9,167,250.00	800,000.00	-	19,000,000.00
පුත්තලම	පුත්තලම	Puttalam	-	4,000,000.00	12,600,000.00	7,563,499.88	900,000.00	-	18,686,666.67
අනුරාධපුර	අනුරාධපුර	Anuradhapura	-	2,000,000.00	31,200,000.00	13,175,000.00	-	-	999,996.00
පොලොන්නරුව	පොලොන්නරුව	Polonnaruwa	-	-	6,650,000.00	7,700,000.00	-	-	2,666,666.00
බදුල්ල	බදුල්ල	Badulla	-	2,200,000.00	28,850,000.00	15,030,000.00	450,000.00	-	19,085,957.00
මාතලේ	මාතලේ	Monaragala	-	-	11,400,000.00	7,500,000.00	-	-	-
රත්නපුර	රත්නපුර	Rathnapura	-	1,000,000.00	28,150,000.00	5,512,000.00	1,400,000.00	-	5,500,000.00
කුරුම	කුරුම	Kegalle	-	-	17,400,500.00	6,082,110.00	700,000.00	-	-
එකතුව	එකතුව	Total	67,266,506.00	57,086,200.00	455,396,334.00	497,166,279.88	13,007,067.45	25,250.00	149,839,285.67

පරිච්ඡේදය "7B"
 புற்றசேர்க்கை "7B"
 Appendix "7B"

2017 இலக்கு மீட்டிய மது விலக்கு இழப்புகள் மீட்டிய மது விலக்கு இழப்புகள்
 2017 நிதியாண்டில் வெளிநாட்டு மதுபான உரிமங்களிலிருந்து அறவிடப்பட்ட கட்டணங்கள்
 Statement of Fees Recovered from Foreign Liquor Licences for the financial Year 2017

දිස්ත්‍රික්කය	மாவட்டம்	District	ආපනලාල ලලලල ර.බී.11 உணவகங்கள் உரிமம் Resturent licence FL-11	තානායම් ලලලල ර.බී.12 வாயு வீடு உரிமம் Gaseous FL-12	සමාජලාල ලලලල ර.බී.13A கலிகள் உரிமம் Proprietary clubs licence FL-13 A	වෙන්නේ කරැවන්ගේ ලලලල ර.බී.16 ஏலவிற்பனையாளர் உரிமம் Auctioneers Licences FL-16	පරිපාක ස්ත්‍රිත ලලලල ර.බී.17 சத்திகரிக்கப்பட்ட மதுசர உரிமம் Rectified spirits licence FL-17	මාසයේ වසින් ලලලල ර.බී.18 மருந்தாட்டப்பட்டவை உரிமம் Medicated wine licences FL-18	විශේෂ ලලලල ර.බී.22 විශේෂ உரிமம் Special licences FL-22
කොළඹ	கொழும்பு	Colombo	79,136,854.00	800,000.00	10,829,000.00	-	-	0	-
ගම්පහ	கம்பஹா	Gampaha	46,530,000.00	365,000.00	1,200,000.00	-	-	-	14,211,250.00
කලුතර	களுத்தறை	Kalutara	7,733,500.00	1,840,000.00	500,000.00	-	-	-	1,790,000.00
කහනුවර	கண்டி	Kandy	16,000,000.00	1,800,000.00	3,750,000.00	-	50,000	-	3,050,000.00
මාතලේ	மாதலையூர்	Matale	7,450,000.00	400,000.00	650,000.00	-	-	-	2,700,000.00
නුවඑරුළු	நுவரெலியூர்	Nuwara- Eliya	15,500,000.00	850,000.00	1,800,000.00	-	-	-	2,050,000.00
ගාල්ල	காலி	Galle	13,800,000.00	400,000.00	1,200,000.00	-	-	-	2,900,000.00
මාතර	மாதர	Matara	8,500,000.00	1,200,000.00	4,500,000.00	-	-	-	250,000.00
හම්බන්තොට	அம்பாந்தோட்டை	Hambantota	1,250,000.00	300,000.00	-	-	-	-	450,000.00
යාපනය	யாழ்ப்பாணம்	Jaffna	-	-	-	-	-	-	-
මන්නාරම	மன்னார்	Mannar	1,300,000.00	-	-	-	-	-	250,000.00
වවුනියාව	வவுனியா	Vavunia	2,306,000.00	300,000.00	-	-	-	-	300,000.00
කිලිනොච්චිය	கிளிநொச்சி	Killinochchi	0	0	0	-	-	-	0
මුලතිව්	முல்லைத்தீவு	Mulathivu	1,200,000.00	-	0	-	-	-	-
අම්පාර	அம்பாறை	Baticola	4,200,000.00	400,000.00	0	-	-	-	1,250,000.00
ත්‍රිකුණාමලය	திருகோணமலை	Ampara	3,050,000.00	400,000.00	100,000.00	-	-	-	550,000.00
කුරුමෙල	குருநாகல்	Trincomalee	4,300,000.00	-	-	-	-	-	350,000.00
පුත්තම	புத்தளம்	Puttalam	9,219,800	800,000	-	-	-	-	1,670,000
අනුරාධපුර	அனுராதபுரம்	Anuradhapura	4,900,000.00	1,300,000.00	600,000.00	-	-	-	2,650,000.00
පොලොන්නරුව	பொலன்னறுவை	Polonnaruwa	3,250,000.00	400,000.00	-	-	-	-	950,000.00
බදුල්ල	பதுளை	Badulla	3,000,000.00	-	-	-	-	-	700,000.00
මොනරාගල	மொனாரகலை	Monaragala	12,350,000.00	1,200,000.00	1,400,000.00	-	-	-	2,003,000.00
රත්නපුර	ரத்தினபுரி	Rathnapura	3,750,000.00	80,000.00	1,236,000.00	-	-	-	1,850,000.00
කැගේ	கேகாலை	Kegalle	9,250,000.00	1,100,000.00	600,000.00	-	-	-	950,000.00
එකතුව	மொத்தம்	Total	67,403,786.00	6,380,000.00	4,586,000.00	-	50,000.00	-	14,322,490.00

